

LEA Name : Loyalsock Township SD
Address : 1605 Four Mile Drive
Williamsport , PA 17701

County : Lycoming
AUN Number : 117414203
LEA Type : SD

Annual Financial Report Accuracy Certification Statement

For Fiscal Year Ending
6/30/2017

Pennsylvania Department of Education

&

Office of Comptroller Operations

PDE-2056: Intermediate Unit

PDE-2057: School District, AVTS/CTC, Charter School,
and Special Program Jointure

CERTIFICATION: By signing this page I agree that the electronic data submitted is a complete and accurate statement of the financial operations and status of the local education agency for the fiscal year. It has been prepared in accordance with generally accepted accounting principles and established Commonwealth of PA reporting guidelines.



Chief School Administrator Signature

10/25/17

Date



Board Secretary Signature

10/25/17

Date

Maurice D Egly

Contact Person

(570)326-6508 Ext :1004

Contact Person Telephone Number

degly@ltsd.k12.pa.us

Contact Person E-mail Address

570 326-0770

Contact Person Fax Number

Audit Certification
Annual Financial Report:
For Fiscal Year Ending **6/30/2017**
(Pursuant to PA School Code Section 218(b))

LEA Name : Loyalsock Township SD
AUN Number : 117414203
County : Lycoming

Audit Certification Due: 12/31/2017

This certification is applicable to the Annual Financial Report data submitted through the Consolidated Financial Reporting System on: 10/25/17
Date

Auditing Firm: *Larson Kellett & Associates, P.C.*
40 Choate Circle
Montoursville, PA 17754

Auditor Contact Name: *Brian Larson*
Auditor Phone: *570-368-2941*
Auditor E-mail: *Brian@larsonkellett.com*

CERTIFICATION: By signing this page I agree that the financial statements of the school have been properly audited as noted above pursuant to Article XXIV, and in the auditor's professional opinion, the Annual Financial Report (PDE-2057) submitted on the date referenced is materially consistent with the audited financial statements.

Chief School Administrator

Maurice D Egly
Signature
10/25/17
Date

Board Secretary

M. Daniel Egly
Signature
10/25/17
Date

Maurice D Egly
Contact Person

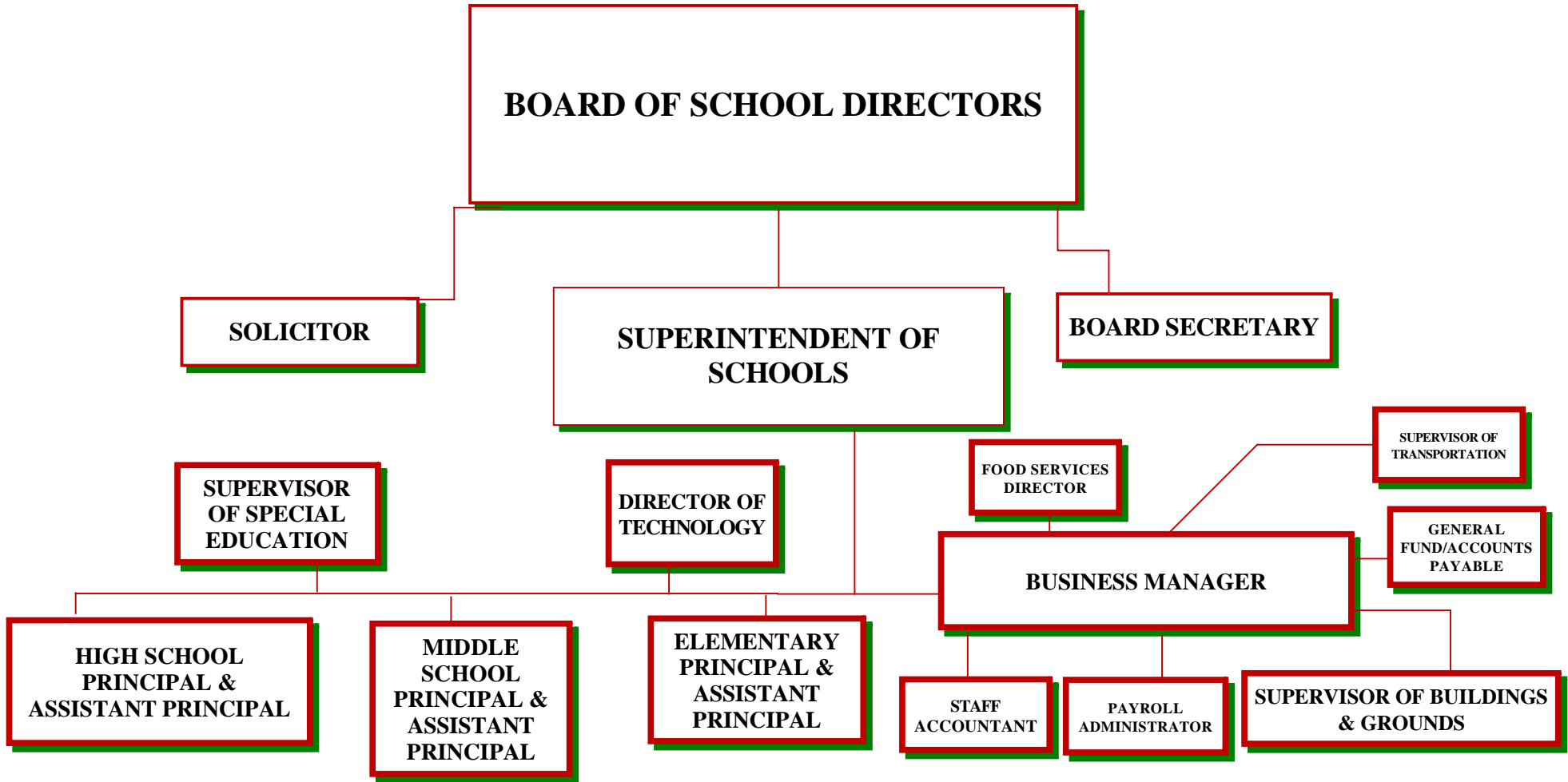
degly@ltsd.k12.pa.us
Contact Person E-mail Address

(570)326-6508 Ext :1004
Contact Person Telephone Number

(570)326-0770
Contact Person Fax Number

LOYALSOCK TOWNSHIP SCHOOL DISTRICT

**Organizational Chart
2017-2018**



<u>Val Number</u>	<u>Description</u>	<u>Justification</u>
41005	Expenditures have been reported in Function 1700 – Higher Education Programs for Secondary Students. Please confirm that these costs were for services provided to your school’s secondary students. NOTE: Adult education programs and Community College sponsorship should be coded to Function 1600. Exp detail, Fund 10, Function 1700 total \$1,000.00	This is a fee for a Co-op partnership agreement we have with the Pennsylvania College of Technology.

Amounts Expressed in Whole Dollars	<u>General Fund</u> <u>(10)</u>	<u>Public Purpose Trust</u> <u>(27)</u>	<u>Other Compt Approved</u> <u>(28)</u>	<u>Athletic / Activity</u> <u>(29)</u>	<u>Capital Reserve (690.</u> <u>1850)</u> <u>(31)</u>
Assets And Deferred Outflows Of Resources					
Assets					
0100 Cash and Cash Equivalents	7,126,358				
0110 Investments	1,255,382				
0120 Taxes Receivable	266,829				
0130 Due From Other Funds	67,784				
0141 Due From Other Governments	421,117				
0142 State Revenue Receivable	427,925				
0143 Federal Revenue Receivable	59,744				
0145 Other Intergovernmental Revenue Receivable					
0146 Due from Primary Government					
0147 Due from Component Unit					
0150 Other Receivables	5,165				
0170 Inventories					
0180 Prepaid Expenses (Expenditures)	210,979				
0190 Other Current Assets					
Total Assets	\$9,841,283				
0910 Deferred Outflows of Resources					
Total Assets And Deferred Outflows Of Resources	\$9,841,283				

Amounts Expressed in Whole Dollars	<u>Capital Reserve (1431)</u> <u>(32)</u>	<u>Other Capital Projects</u> <u>Fund</u> <u>(39)</u>	<u>Debt Service</u> <u>(40)</u>	<u>Permanent</u> <u>(90)</u>	<u>Total Governmental</u> <u>Funds</u>
Assets And Deferred Outflows Of Resources					
Assets					
0100 Cash and Cash Equivalents	950,179	638,775			8,715,312
0110 Investments					1,255,382
0120 Taxes Receivable					266,829
0130 Due From Other Funds					67,784
0141 Due From Other Governments					421,117
0142 State Revenue Receivable					427,925
0143 Federal Revenue Receivable					59,744
0145 Other Intergovernmental Revenue Receivable					
0146 Due from Primary Government					
0147 Due from Component Unit					
0150 Other Receivables					5,165
0170 Inventories					
0180 Prepaid Expenses (Expenditures)					210,979
0190 Other Current Assets					
Total Assets	\$950,179	\$638,775			\$11,430,237
0910 Deferred Outflows of Resources					
Total Assets And Deferred Outflows Of Resources	\$950,179	\$638,775			\$11,430,237

Amounts Expressed in Whole Dollars

<u>General Fund</u>	<u>Public Purpose Trust</u>	<u>Other Compt Approved</u>	<u>Athletic / Activity</u>	<u>Capital Reserve (690.</u>
<u>(10)</u>	<u>(27)</u>	<u>(28)</u>	<u>(29)</u>	<u>1850)</u>
				<u>(31)</u>

Liabilities And Deferred Inflows Of Resources And Fund Balances

Liabilities

0400 Due to Other Funds	53,338
0411 Due to Other Governments	180,190
0412 Due to Primary Government	
0413 Due to Component Unit	
0420 Accounts Payable	78,076
0430 Contracts Payable	
0440 Current Portion of Long-Term Debt	
0450 Short-Term Payables	
0461 Accrued Salaries and Benefits	2,108,635
0462 Payroll Deductions and Withholding	7,243
0480 Unearned Revenues	
0490 Other Current Liabilities	41,880

Total Liabilities **\$2,469,362**

0950 Deferred Inflows of Resources	222,298
------------------------------------	---------

Fund Balances

0810 Nonspendable Fund Balance	210,979
0820 Restricted Fund Balance	
0830 Committed Fund Balance	2,995,000
0840 Assigned Fund Balance	666,889
0850 Unassigned Fund Balance	3,276,755

Total Fund Balances **\$7,149,623**

Total Liabilities, Deferred Inflows Of Resources And Fund Balances **\$9,841,283**

Amounts Expressed in Whole Dollars

	<u>Capital Reserve (1431)</u> <u>(32)</u>	<u>Other Capital Projects</u> <u>Fund</u> <u>(39)</u>	<u>Debt Service</u> <u>(40)</u>	<u>Permanent</u> <u>(90)</u>	<u>Total Governmental</u> <u>Funds</u>
Liabilities And Deferred Inflows Of Resources And Fund Balances					
Liabilities					
0400 Due to Other Funds					53,338
0411 Due to Other Governments					180,190
0412 Due to Primary Government					
0413 Due to Component Unit					
0420 Accounts Payable	8,368	101,446			187,890
0430 Contracts Payable					
0440 Current Portion of Long-Term Debt					
0450 Short-Term Payables					
0461 Accrued Salaries and Benefits					2,108,635
0462 Payroll Deductions and Withholding					7,243
0480 Unearned Revenues					
0490 Other Current Liabilities					41,880
Total Liabilities	\$8,368	\$101,446			\$2,579,176
0950 Deferred Inflows of Resources					222,298
Fund Balances					
0810 Nonspendable Fund Balance					210,979
0820 Restricted Fund Balance	941,811	537,329			1,479,140
0830 Committed Fund Balance					2,995,000
0840 Assigned Fund Balance					666,889
0850 Unassigned Fund Balance					3,276,755
Total Fund Balances	\$941,811	\$537,329			\$8,628,763
Total Liabilities, Deferred Inflows Of Resources And Fund Balances	\$950,179	\$638,775			\$11,430,237

Amounts Expressed in Whole Dollars	<u>General Fund</u> <u>(10)</u>	<u>Public Purpose Trust</u> <u>(27)</u>	<u>Other Compt Approved</u> <u>(28)</u>	<u>Athletic / Activity</u> <u>(29)</u>	<u>Capital Reserve (690.</u> <u>1850)</u> <u>(31)</u>
Revenues					
6000 Revenue from Local Sources	15,171,885				
7000 Revenue from State Sources	6,892,401				
8000 Revenue from Federal Sources	373,909				
Total Revenues	\$22,438,195				
Expenditures					
1000 Instruction	12,774,246				
2000 Support Services	6,199,651				
3000 Operation of Non-Instructional Services	636,917				
4000 Facilities Acquisition, Construction and Improvement Services					
5110 Debt Service	246,705				
5130 Refund of Prior Year Revenues / Receipts					
Total Expenditures	\$19,857,519				
Excess (Deficiency) Of Revenues Over Expenditures	\$2,580,676				
Other Financing Sources (Uses)					
9110 Face Value of Bonds Issued					
9120 Proceeds from Refunding of Bonds					
9130 Bond Premiums					
9200 Proceeds from Extended-Term Financing	494,299				
9300 Interfund Transfers - IN					
9400 Sale of or Compensation for Loss of Fixed Assets	34,495				
9710 Transfers from Component Units					
9720 Transfers from Primary Governments					
9910 Other Financing Sources Not Listed in the 9000 Series					
9990 Insurance Recoveries					
5120 Debt Service – Refunded Bonds					
5150 Bond Discounts					
5200 Interfund Transfers – Out	2,365,938				
5300 Transfers Out to Component Units/Primary Governments					
Total Other Financing Sources (Uses)	(\$1,837,144)				

Amounts Expressed in Whole Dollars	<u>Capital Reserve (1431)</u> <u>(32)</u>	<u>Other Capital Projects</u> <u>Fund</u> <u>(39)</u>	<u>Debt Service</u> <u>(40)</u>	<u>Permanent</u> <u>(90)</u>	<u>Total Governmental</u> <u>Funds</u>
Revenues					
6000 Revenue from Local Sources	3,663	8,967			15,184,515
7000 Revenue from State Sources					6,892,401
8000 Revenue from Federal Sources					373,909
Total Revenues	\$3,663	\$8,967			\$22,450,825
Expenditures					
1000 Instruction					12,774,246
2000 Support Services	205,550	229			6,405,430
3000 Operation of Non-Instructional Services					636,917
4000 Facilities Acquisition, Construction and Improvement Services	23,245	846,523			869,768
5110 Debt Service			2,215,938		2,462,643
5130 Refund of Prior Year Revenues / Receipts					
Total Expenditures	\$228,795	\$846,752	\$2,215,938		\$23,149,004
Excess (Deficiency) Of Revenues Over Expenditures	(\$225,132)	(\$837,785)	(\$2,215,938)		(\$698,179)
Other Financing Sources (Uses)					
9110 Face Value of Bonds Issued					
9120 Proceeds from Refunding of Bonds					
9130 Bond Premiums					
9200 Proceeds from Extended-Term Financing					494,299
9300 Interfund Transfers - IN	150,000		2,215,938		2,365,938
9400 Sale of or Compensation for Loss of Fixed Assets					34,495
9710 Transfers from Component Units					
9720 Transfers from Primary Governments					
9910 Other Financing Sources Not Listed in the 9000 Series					
9990 Insurance Recoveries					
5120 Debt Service – Refunded Bonds					
5150 Bond Discounts					
5200 Interfund Transfers – Out					2,365,938
5300 Transfers Out to Component Units/Primary Governments					
Total Other Financing Sources (Uses)	\$150,000		\$2,215,938		\$528,794

Amounts Expressed in Whole Dollars	<u>General Fund</u> <u>(10)</u>	<u>Public Purpose Trust</u> <u>(27)</u>	<u>Other Compt Approved</u> <u>(28)</u>	<u>Athletic / Activity</u> <u>(29)</u>	<u>Capital Reserve</u> <u>(690.</u> <u>1850)</u> <u>(31)</u>
Special And Extraordinary Items					
9920 Special Items – Gains					
9930 Extraordinary Items – Gains					
5520 Special Items – Losses					
5530 Extraordinary Items – Losses					
Net Change In Fund Balances	\$743,532				
Fund Balance					
0001 Fund Balance - Beginning of Fiscal Year	6,406,091				
Fund Balance - End Of Year	\$7,149,623				

Amounts Expressed in Whole Dollars	<u>Capital Reserve (1431)</u> <u>(32)</u>	<u>Other Capital Projects</u> <u>Fund</u> <u>(39)</u>	<u>Debt Service</u> <u>(40)</u>	<u>Permanent</u> <u>(90)</u>	<u>Total Governmental</u> <u>Funds</u>
Special And Extraordinary Items					
9920 Special Items – Gains					
9930 Extraordinary Items – Gains					
5520 Special Items – Losses					
5530 Extraordinary Items – Losses					
Net Change In Fund Balances	(\$75,132)	(\$837,785)			(\$169,385)
Fund Balance					
0001 Fund Balance - Beginning of Fiscal Year	1,016,943	1,375,114			8,798,148
Fund Balance - End Of Year	\$941,811	\$537,329			\$8,628,763

Amounts Expressed in Whole Dollars	<u>Food Service</u> <u>(51)</u>	<u>Child Care</u> <u>Operations</u> <u>(52)</u>	<u>Other Enterprise</u> <u>(58)</u>	<u>TOTAL</u>	<u>Internal Service</u> <u>(60)</u>
Assets And Deferred Outflows Of Resources					
Current Assets					
0100 Cash and Cash Equivalents	442,941			442,941	
0110 Investments					
0130 Due From Other Funds	53,338			53,338	
0141 Due From Other Governments	13,689			13,689	
0142 State Revenue Receivable					
0143 Federal Revenue Receivable					
0146 Due from Primary Government					
0147 Due from Component Unit					
0150 Other Receivables					
0170 Inventories	2,908			2,908	
0180 Prepaid Expenses (Expenditures)					
0190 Other Current Assets					
Total Current Assets	\$512,876			\$512,876	
Noncurrent Assets					
0211 Land					
0212 Site Improvements (Net)					
0220 Buildings and Building Improvements (Net)					
0230 Machinery, Equipment and Furniture (Net)	249,186			249,186	
0250 Construction in Progress					
0260 Long Term Prepayments					
0290 Other Noncurrent Assets					
Total Noncurrent Assets	\$249,186			\$249,186	
0910 Deferred Outflows of Resources	192,515			192,515	
Total Assets And Deferred Outflows Of Resources	\$954,577			\$954,577	

Amounts Expressed in Whole Dollars	<u>Food Service</u> <u>(51)</u>	<u>Child Care</u> <u>Operations</u> <u>(52)</u>	<u>Other Enterprise</u> <u>(58)</u>	<u>TOTAL</u>	<u>Internal Service</u> <u>(60)</u>
Liabilities And Deferred Inflows Of Resources And Net Position					
Current Liabilities					
0400 Due to Other Funds	67,784			67,784	
0411 Due to Other Governments					
0413 Due to Component Unit					
0420 Accounts Payable	956			956	
0430 Contracts Payable					
0440 Current Portion of Long-Term Debt	577			577	
0450 Short-Term Payables					
0461 Accrued Salaries and Benefits	3,561			3,561	
0462 Payroll Deductions and Withholding					
0480 Unearned Revenues	15,430			15,430	
0490 Other Current Liabilities					
Total Current Liabilities	\$88,308			\$88,308	
Noncurrent Liabilities					
0510 Bonds Payable					
0520 Extended-Term Financing Agreements Payable					
0530 Lease-Purchase Obligations	1,928			1,928	
0540 Accumulated Compensated Absences					
0550 Authority Lease Obligations					
0560 Other Post-Employment Benefits (OPEB)					
0570 Net Pension Liability	1,004,613			1,004,613	
0599 Other Noncurrent Liabilities					
Total Noncurrent Liabilities	\$1,006,541			\$1,006,541	
Total Liabilities	\$1,094,849			\$1,094,849	
0950 Deferred Inflows of Resources	10,861			10,861	
Net Position					
0791 Net Investment in Capital Assets	249,186			249,186	
0008 Restricted Net Position (0792 – 0798)					
0799 Unrestricted Net Position	(400,319)			(400,319)	
Total Net Position	(\$151,133)			(\$151,133)	
Total Liabilities And Deferred Inflows Of Resources And Net Position	\$954,577			\$954,577	

Amounts Expressed in Whole Dollars	<u>Food Service</u> <u>(51)</u>	<u>Child Care Operations</u> <u>(52)</u>	<u>Other Enterprise</u> <u>(58)</u>	<u>TOTAL</u>	<u>Internal Service</u> <u>(60)</u>
Operating Revenues					
6600 Food Service Revenue	462,507			462,507	
0071 Charges for Services					
0072 Other Operating Revenue					
Total Operating Revenues	\$462,507			\$462,507	
Operating Expenses					
100 Personnel Services – Salaries	285,217			285,217	
200 Personnel Services – Employee Benefits	194,793			194,793	
300 Purchased Professional and Technical Services					
400 Purchased Property Services	4,047			4,047	
500 Other Purchased Services	1,863			1,863	
600 Supplies	489,140			489,140	
740 Depreciation	49,641			49,641	
810 Dues and Fees	1,016			1,016	
890 Miscellaneous Expenditures					
Total Operating Expenses	\$1,025,717			\$1,025,717	
Operating Income (Loss)	(\$563,210)			(\$563,210)	
Non Operating Revenues (Expenses)					
6500 Earnings on Investments	1,211			1,211	
6920 Contributions and Donations from Private Sources					
6930 Gains or Losses on Sale of Fixed Assets	(3,102)			(3,102)	
6991 Refunds of a Prior Year Expenditure					
7000 Revenue from State Sources	75,866			75,866	
8000 Revenue from Federal Sources	441,892			441,892	
820 Claims and Judgments Against the LEA					
830 Interest					
TOTAL Non Operating Revenues (Expenses)	\$515,867			\$515,867	
Income (Loss) Before Contributions And Transfers	(\$47,343)			(\$47,343)	

Amounts Expressed in Whole Dollars	<u>Food Service</u> <u>(51)</u>	<u>Child Care Operations</u> <u>(52)</u>	<u>Other Enterprise</u> <u>(58)</u>	<u>TOTAL</u>	<u>Internal Service</u> <u>(60)</u>
Contributions, Transfers, and Special and Extraordinary Items					
5200 Interfund Transfers – Out					
5300 Transfers Out to Component Units/Primary Governments					
5520 Special Items – Losses					
5530 Extraordinary Items – Losses					
9300 Interfund Transfers - IN					
9500 Capital Contributions					
9700 Transfers IN From Component Units/Primary Governments					
9920 Special Items – Gains					
9930 Extraordinary Items – Gains					
Change In Net Position	(\$47,343)			(\$47,343)	
0002 Net Position - Beginning of Fiscal Year	(103,790)			(103,790)	
0003 Accounting Changes / Residual Equity Transfers					
Net Position - End Of Year	(\$151,133)			(\$151,133)	

Amounts Expressed in Whole Dollars	<u>Food Service</u> <u>(51)</u>	<u>Child Care Operations</u> <u>(52)</u>	<u>Other Enterprise</u> <u>(58)</u>	<u>TOTAL</u>	<u>Internal Service(60)</u>
Cash Flows From Operating Activities					
0011 Cash Receipts From Users	462,364			462,364	
0012 Cash Receipts From Assessments Made to Other Funds					
0013 Cash Receipts From Earnings on Investments					
0014 Cash Receipts From Other Operating Revenue					
0015 Cash Payments To Employees For Services	441,372			441,372	
0016 Cash Payments For Insurance Claims					
0017 Cash Payments To Suppliers For Goods and Services	433,257			433,257	
0018 Cash Payments For Other Operating Expenses	36			36	
Net Cash Provided By (Used For) Operating Activities	(\$412,301)			(\$412,301)	
Cash Flows From Non-Capital Financing Activities					
0021 Receipts From Local Sources - 6000					
0022 Receipts From State Sources - 7000	71,780			71,780	
0023 Receipts From Federal Sources -8000	381,026			381,026	
0024 Notes and Loans Received (Repaid)	(521)			(521)	
0025 Interest Paid on Notes/Loans - 5100-830					
0026 Operating Transfers In (Out)/Residual Equity Trans					
0027 Operating Transfers In (Out) Primary Government / Comp Unit					
0028 Receipts From Refund of Prior Year Expenditures - 6991					
0029 Special and Extraordinary Gains (losses)					
Net Cash Prov By (Used for) Non-Capital Financing Activities	\$452,285			\$452,285	
Cash Flows From Capital and Related Financing Activities					
0031 Payments For Fac Acq, Const, and Imp - 4000	(34,924)			(34,924)	
0032 Gain / (Loss) on Sale of Fixed Assets - 6930					
0033 Proceeds From Extended Term Financing - 9200					
0034 Principal Paid on Financing Agreements					
0035 Interest Paid on Financing Agreements - 5100-830					
0036 (Inc) Dec in Contributed Capital					
Net Cash Prov By (Used for) Capital and Related Financing Activities	(\$34,924)			(\$34,924)	
Cash Flows From Investing Activities					
0041 Earnings on Investments - 6500	1,211			1,211	
0042 Purchase of Inv Securities / Deposits to Inv Pools					
0043 Receipts From Investment Pool Withdrawals					
0044 Proceeds from Sale and Maturity of Inv Securities					
0045 Loans Received (Paid)					
Net Cash Prov By (Used for) Investing Activities	\$1,211			\$1,211	

	<u>Food Service</u> <u>(51)</u>	<u>Child Care Operations</u> <u>(52)</u>	<u>Other Enterprise</u> <u>(58)</u>	<u>TOTAL</u>	<u>Internal Service</u> <u>(60)</u>
Net Increase (Decrease) in Cash Flows	6,271			6,271	
0004 Cash and Cash Equivalents Beginning of Year	436,670			436,670	
Cash and Cash Equivalents at Year End	\$442,941			\$442,941	
<hr/>					
Reconciliation of Operating Income (Loss) To Net Cash Provided by (Used For) Operating Activities					
0005 Operating Income (Loss) per REP	(563,210)			(563,210)	
Adjustments					
0051 Depreciation and Net Amortization	73,257			73,257	
0052 Provision for Uncollectible Accounts					
0053 Other Adjustments	58,176			58,176	
Effect of Changes in Assets, Liabilities, Deferred Outflows and Deferred Inflows					
0054 (Inc) Dec In Accounts Receivable (0120-0150)	(2,626)			(2,626)	
0055 Advances to Other Funds (0160)					
0056 (Inc) Dec in Inventories (0170)	2,649			2,649	
0057 (Inc) Dec in Prepaid Expenses (0180)					
0058 (Inc) Dec in Other Current or Noncurrent Assets					
0064 Deferred Outflows (0910)	(131,882)			(131,882)	
0059 Inc (Dec) in Accounts Payable (0400-0450)	10,275			10,275	
0060 Inc (Dec) in Accrued Salaries/Benefits (0461)	2,532			2,532	
0065 Inc (Dec) in Net Pension Liabilities (0570)	136,221			136,221	
0066 Inc (Dec) in Other Postemp Benefit Oblig (0560)					
0061 Inc (Dec) in Payroll Deductions/Withholding (0462)					
0062 Inc (Dec) in Unearned Revenue (0480)	(1,825)			(1,825)	
0063 Inc (Dec) in Other Current or Noncurrent Liabilities					
0067 Deferred Inflows (0950)	4,132			4,132	
Total Adjustments	\$150,909			\$150,909	
Cash Provided By (Used for) Total	(\$412,301)			(\$412,301)	

**COMBINED STATEMENT OF CASH FLOWS
SCHEDULE OF NONCASH INVESTING, CAPITAL, AND FINANCING ACTIVITIES**

Explanation of Transaction and Balance Sheet Effect	Amount
FOOD COMMODITIES RECEIVED	58,176
Total	\$58,176

LEA : 117414203 Loyalsock Township SD

Printed 10/26/2017 1:39:00 PM

Amounts Expressed in Whole Dollars	<u>Private Purpose Trust</u> <u>(71)</u>	<u>Investment Trust</u> <u>(72)</u>	<u>Pension Trust</u> <u>(73)</u>	<u>Activity</u> <u>(81)</u>
Assets And Deferred Outflows Of Resources				
Assets				
0100 Cash and Cash Equivalents	65,424			88,986
0110 Investments				
0130 Due From Other Funds				
0147 Due from Component Unit				
0150 Other Receivables				
0170 Inventories				
0180 Prepaid Expenses (Expenditures)				
0190 Other Current Assets				
0220 Buildings and Building Improvements (Net)				
0230 Machinery, Equipment and Furniture (Net)				
Total Assets	\$65,424			\$88,986
0910 Deferred Outflows of Resources				
Total Assets And Deferred Outflows Of Resources	\$65,424			\$88,986

LEA : 117414203 Loyalsock Township SD

Printed 10/26/2017 1:39:00 PM

Amounts Expressed in Whole Dollars	<u>Other Agency</u> <u>(89)</u>	<u>Discrete Component Units</u> <u>(98)</u>	<u>Discrete Component Units</u> <u>(99)</u>	<u>Total Fiduciary Funds</u>
Assets And Deferred Outflows Of Resources				
Assets				
0100 Cash and Cash Equivalents				154,410
0110 Investments				
0130 Due From Other Funds				
0147 Due from Component Unit				
0150 Other Receivables				
0170 Inventories				
0180 Prepaid Expenses (Expenditures)				
0190 Other Current Assets				
0220 Buildings and Building Improvements (Net)				
0230 Machinery, Equipment and Furniture (Net)				
Total Assets				\$154,410
0910 Deferred Outflows of Resources				
Total Assets And Deferred Outflows Of Resources				\$154,410

LEA : 117414203 Loyalsock Township SD

Printed 10/26/2017 1:39:00 PM

Amounts Expressed in Whole Dollars	<u>Private Purpose Trust</u> (71)	<u>Investment Trust</u> (72)	<u>Pension Trust</u> (73)	<u>Activity</u> (81)
Liabilities, Deferred Inflows Of Resources And Net Position				
Liabilities				
0400 Due to Other Funds				
0411 Due to Other Governments				
0412 Due to Primary Government				
0413 Due to Component Unit				
0420 Accounts Payable				1,361
0430 Contracts Payable				
0450 Short-Term Payables				
0461 Accrued Salaries and Benefits				
0462 Payroll Deductions and Withholding				
0480 Unearned Revenues				
0490 Other Current Liabilities				87,625
Total Liabilities				\$88,986
0950 Deferred Inflows of Resources				
Net Position				
0791 Net Investment in Capital Assets				
0009 Restricted Net Position (0792 – 0798)	65,424			
0799 Unrestricted Net Position				
Total Net Position	\$65,424			
Total Liabilities, Deferred Inflows Of Resources And Net Position	\$65,424			\$88,986

LEA : 117414203 Loyalsock Township SD

Printed 10/26/2017 1:39:00 PM

Amounts Expressed in Whole Dollars

<u>Other Agency</u>	<u>Discrete Component Units</u>	<u>Discrete Component Units</u>	<u>Total Fiduciary Funds</u>
(89)	(98)	(99)	

Liabilities, Deferred Inflows Of Resources And Net Position

Liabilities

0400 Due to Other Funds			
0411 Due to Other Governments			
0412 Due to Primary Government			
0413 Due to Component Unit			
0420 Accounts Payable			1,361
0430 Contracts Payable			
0450 Short-Term Payables			
0461 Accrued Salaries and Benefits			
0462 Payroll Deductions and Withholding			
0480 Unearned Revenues			
0490 Other Current Liabilities			87,625

Total Liabilities			\$88,986
--------------------------	--	--	-----------------

0950 Deferred Inflows of Resources

Net Position

0791 Net Investment in Capital Assets			
0009 Restricted Net Position (0792 – 0798)			65,424
0799 Unrestricted Net Position			

Total Net Position			\$65,424
---------------------------	--	--	-----------------

Total Liabilities, Deferred Inflows Of Resources And Net Position			\$154,410
--	--	--	------------------

Amounts Expressed in Whole Dollars	<u>Private Purpose Trust</u> (71)	<u>Investment Trust</u> (72)	<u>Pension Trust</u> (73)	<u>Discrete Component</u> <u>Units</u> (98)	<u>Discrete Component</u> <u>Units</u> (99)	<u>Total Fiduciary</u> <u>Funds</u>
Additions						
0091 Gifts and Contributions	8,020					8,020
0092 Other Additions	122					122
Deductions						
0093 Scholarships Awarded	6,900					6,900
0094 Other Deductions						
Change In Net Position	\$1,242					\$1,242
0006 Net Position – Beginning of Fiscal Year	64,182					64,182
0007 Net Position Held in Trust for Pension Benefits						
Net Position - End of Fiscal Year	\$65,424					\$65,424

	<u>Revenue Reported In Current Year</u>	<u>Current Year Tax Accrual</u>	<u>Prior Year Tax Accrual</u>	<u>Taxes Collected In Current Year</u>
<u>Revenue from Local Sources</u>				
6111 Current Real Estate Taxes	9,917,316.31			9,917,316.31
6112 Interim Real Estate Taxes	33,724.79			33,724.79
6113 Public Utility Realty Taxes	15,567.93			15,567.93
6114 Payments in Lieu of Current Taxes - State / Local	127,735.31			127,735.31
6143 Current Act 511 Local Services Taxes	32,401.70			32,401.70
6151 Current Act 511 Earned Income Taxes	3,132,672.73			3,132,672.73
6153 Current Act 511 Real Estate Transfer Taxes	534,594.01			534,594.01
6155 Current Act 511 Business Privilege Taxes	376,725.99			376,725.99
6411 Delinquent Real Estate Taxes	282,251.38			282,251.38
6452 Delinquent Act 511 Occupation Taxes	963.25			963.25
6455 Delinquent Act 511 Business Privilege Taxes	57,496.81			57,496.81
6500 Earnings on Investments	28,608.92			
6700 Revenues from LEA Activities	54,600.28			
6810 Revenue from Local Governmental Units	32,000.00			
6821 State Revenue Received from Other Pennsylvania Public LEAs	62,519.49			
6832 Federal IDEA Revenue Received as Pass Through	252,666.00			
6910 Rentals	158,980.70			
6920 Contributions and Donations from Private Sources	12,652.00			
6944 Receipts from Other LEAs in Pennsylvania - Education	18,864.26			
6949 Other Tuition from Patrons	2,100.00			
6991 Refunds of a Prior Year Expenditure	3,315.05			
6999 Other Revenues Not Specified Above	34,127.62			
TOTAL Revenue from Local Sources	\$15,171,884.53			\$14,511,450.21

**Revenue Reported
In Current Year**

Revenue from State Sources

7110 Basic Education Funding	3,054,023.92		
7160 Tuition for Orphans Subsidy	25,152.31		
7271 Special Education funds for School-Aged Pupils	727,332.24		
7311 Pupil Transportation Subsidy	135,798.45		
7320 Rental and Sinking Fund Payments / Building Reimbursement Subsidy	670,763.28		
7330 Health Services (Medical, Dental, Nurse, Act 25)	26,493.15		
7340 State Property Tax Reduction Allocation	393,671.04		
7505 Ready to Learn Block Grant	164,160.00		
7810 State Share of Social Security and Medicare Taxes	350,980.61		
7820 State Share of Retirement Contributions	1,344,026.16		
TOTAL Revenue from State Sources	\$6,892,401.16		

**Revenue Reported
In Current Year**

Revenue from Federal Sources

8110 Payments for Federally Impacted Areas	2,780.09			
8514 NCLB, Title I - Improving the Academic Achievement of the Disadvantaged	319,229.80			
8515 NCLB, Title II - Preparing, Training and Recruiting High Quality Teachers and Principals	50,215.00			
8810 School-Based Access Medicaid Reimbursement Program (SBAP) Reimbursements (Access)	1,683.91			
TOTAL Revenue from Federal Sources	\$373,908.80			

	Revenue Reported In Current Year		
<u>Other Financing Sources</u>			
9290 Other Extended-Term Financing Proceeds	494,299.00		
9400 Sale of or Compensation for Loss of Fixed Assets	34,495.25		
TOTAL Other Financing Sources	\$528,794.25		
TOTAL FROM ALL SOURCES	\$22,966,988.74		\$14,511,450.21

Revenue from Local Sources	15,171,884.53
Revenue from State Sources	6,892,401.16
Revenue from Federal Sources	373,908.80
Other Financing Sources	528,794.25
TOTAL FROM ALL SOURCES	\$22,966,988.74

General Fund (10)

	<u>Total</u>
1000 Instruction	
100 Personnel Services – Salaries	
100 Personnel Services – Salaries	6,410,267.96
Total Personnel Services – Salaries	\$6,410,267.96
200 Personnel Services – Employee Benefits	
210 Group Insurance – Contracted Provider	1,228,877.90
220 Social Security Contributions	467,432.51
230 PSERS Retirement Contributions	1,876,090.46
250 Unemployment Compensation	28,245.30
260 Workers’ Compensation	18,056.36
Total Personnel Services – Employee Benefits	\$3,618,702.53
300 Purchased Professional and Technical Services	
310 Official / Administrative Services	293,891.78
322 Professional Educational Services – Ius	973,414.80
Total Purchased Professional and Technical Services	\$1,267,306.58
400 Purchased Property Services	
430 Repairs and Maintenance Services	36,489.46
440 Rentals	2,142.50
Total Purchased Property Services	\$38,631.96
500 Other Purchased Services	
510 Student Transportation Services	741.75
550 Printing and Binding	383.55
561 Tuition To Other School Districts Within the State	28,470.68
562 Tuition To Pennsylvania Charter Schools	316,848.82
563 Tuition To Nonpublic Schools	5,733.00
564 Tuition To Career and Technology Centers	241,486.39
566 Tuition To Institutions of Higher Education and Technical Institutes	3,550.00
568 Tuition To Private Residential Rehabilitative Institutions (PRRI) [In-State] and Detention Centers	66,169.60
580 Travel	5,847.17
Total Other Purchased Services	\$669,230.96
600 Supplies	
610 General Supplies	88,588.10
640 Books and Periodicals	102,982.37
650 Supplies & Fees – Technology Related	2,089.97
Total Supplies	\$193,660.44
700 Property	
752 Capital Equipment – Original and Additional	572,068.47
Total Property	\$572,068.47
800 Other Objects	
810 Dues and Fees	4,377.00
Total Other Objects	\$4,377.00
Total 1000 Instruction	\$12,774,245.90

General Fund (10)

1100 Regular Programs – Elementary / Secondary

	<u>Elementary</u>	<u>Secondary</u>	<u>Federal</u>	<u>Total</u>
100 Personnel Services – Salaries				
100 Personnel Services – Salaries	2,134,395.05	2,770,569.05	267,151.53	5,172,115.63
Total Personnel Services – Salaries	\$2,134,395.05	\$2,770,569.05	\$267,151.53	\$5,172,115.63
200 Personnel Services – Employee Benefits				
210 Group Insurance – Contracted Provider	368,627.83	589,228.07	33,393.12	991,249.02
220 Social Security Contributions	155,387.70	201,621.24	19,857.55	376,866.49
230 PSERS Retirement Contributions	622,145.13	808,888.23	79,654.95	1,510,688.31
250 Unemployment Compensation	7,794.35	10,700.09	1,439.32	19,933.76
260 Workers' Compensation	5,995.33	2,276.36	1,736.52	10,008.21
Total Personnel Services – Employee Benefits	\$1,159,950.34	\$1,612,713.99	\$136,081.46	\$2,908,745.79
300 Purchased Professional and Technical Services				
310 Official / Administrative Services	39,714.00	54,984.39		94,698.39
Total Purchased Professional and Technical Services	\$39,714.00	\$54,984.39		\$94,698.39
400 Purchased Property Services				
430 Repairs and Maintenance Services	11,397.84	25,091.62		36,489.46
Total Purchased Property Services	\$11,397.84	\$25,091.62		\$36,489.46
500 Other Purchased Services				
550 Printing and Binding		383.55		383.55
561 Tuition To Other School Districts Within the State		28,470.68		28,470.68
562 Tuition To Pennsylvania Charter Schools	13,918.18	202,770.66		216,688.84
563 Tuition To Nonpublic Schools		5,733.00		5,733.00
566 Tuition To Institutions of Higher Education and Technical Institutes		2,550.00		2,550.00
568 Tuition To Private Residential Rehabilitative Institutions (PRRI) [In-State] and Detention Centers	3,560.00	62,609.60		66,169.60
580 Travel	238.00	180.00	1,407.33	1,825.33
Total Other Purchased Services	\$17,716.18	\$302,697.49	\$1,407.33	\$321,821.00
600 Supplies				
610 General Supplies	24,035.47	47,733.18	6,655.74	78,424.39
640 Books and Periodicals	40,112.04	62,628.90		102,740.94
Total Supplies	\$64,147.51	\$110,362.08	\$6,655.74	\$181,165.33
700 Property				
752 Capital Equipment – Original and Additional	18,820.27	551,468.37		570,288.64
Total Property	\$18,820.27	\$551,468.37		\$570,288.64
800 Other Objects				
810 Dues and Fees		2,902.00		2,902.00
Total Other Objects		\$2,902.00		\$2,902.00
Total 1100 Regular Programs – Elementary / Secondary	\$3,446,141.19	\$5,430,788.99	\$411,296.06	\$9,288,226.24

General Fund (10)

	<u>Elementary</u>	<u>Secondary</u>	<u>Federal</u>	<u>Total</u>
1110 Regular Programs				
100 Personnel Services – Salaries				
100 Personnel Services – Salaries	2,134,395.05	2,770,569.05	267,151.53	5,172,115.63
Total Personnel Services – Salaries	\$2,134,395.05	\$2,770,569.05	\$267,151.53	\$5,172,115.63
200 Personnel Services – Employee Benefits				
210 Group Insurance – Contracted Provider	368,627.83	589,228.07	33,393.12	991,249.02
220 Social Security Contributions	155,387.70	201,621.24	19,857.55	376,866.49
230 PSERS Retirement Contributions	622,145.13	808,888.23	79,654.95	1,510,688.31
250 Unemployment Compensation	7,794.35	10,700.09	1,439.32	19,933.76
260 Workers' Compensation	5,995.33	2,276.36	1,736.52	10,008.21
Total Personnel Services – Employee Benefits	\$1,159,950.34	\$1,612,713.99	\$136,081.46	\$2,908,745.79
300 Purchased Professional and Technical Services				
310 Official / Administrative Services	39,714.00	54,984.39		94,698.39
Total Purchased Professional and Technical Services	\$39,714.00	\$54,984.39		\$94,698.39
400 Purchased Property Services				
430 Repairs and Maintenance Services	11,397.84	25,091.62		36,489.46
Total Purchased Property Services	\$11,397.84	\$25,091.62		\$36,489.46
500 Other Purchased Services				
550 Printing and Binding		383.55		383.55
561 Tuition To Other School Districts Within the State		28,470.68		28,470.68
562 Tuition To Pennsylvania Charter Schools	13,918.18	202,770.66		216,688.84
563 Tuition To Nonpublic Schools		5,733.00		5,733.00
566 Tuition To Institutions of Higher Education and Technical Institutes		2,550.00		2,550.00
568 Tuition To Private Residential Rehabilitative Institutions (PRRI) [In-State] and Detention Centers	3,560.00	62,609.60		66,169.60
580 Travel	238.00	180.00	1,407.33	1,825.33
Total Other Purchased Services	\$17,716.18	\$302,697.49	\$1,407.33	\$321,821.00
600 Supplies				
610 General Supplies	24,035.47	47,733.18	6,655.74	78,424.39
640 Books and Periodicals	40,112.04	62,628.90		102,740.94
Total Supplies	\$64,147.51	\$110,362.08	\$6,655.74	\$181,165.33
700 Property				
752 Capital Equipment – Original and Additional	18,820.27	551,468.37		570,288.64
Total Property	\$18,820.27	\$551,468.37		\$570,288.64
800 Other Objects				
810 Dues and Fees		2,902.00		2,902.00
Total Other Objects		\$2,902.00		\$2,902.00
Total 1110 Regular Programs	\$3,446,141.19	\$5,430,788.99	\$411,296.06	\$9,288,226.24

General Fund (10)

1200 Special Programs – Elementary / Secondary

	<u>Elementary</u>	<u>Secondary</u>	<u>Federal</u>	<u>Total</u>
100 Personnel Services – Salaries				
100 Personnel Services – Salaries	268,759.19	520,751.04	205,837.00	995,347.23
Total Personnel Services – Salaries	\$268,759.19	\$520,751.04	\$205,837.00	\$995,347.23
200 Personnel Services – Employee Benefits				
210 Group Insurance – Contracted Provider	52,128.81	112,288.45	32,617.32	197,034.58
220 Social Security Contributions	19,804.92	38,811.82	14,211.68	72,828.42
230 PSERS Retirement Contributions	79,878.67	213,075.84		292,954.51
250 Unemployment Compensation	2,954.85	4,548.17		7,503.02
260 Workers' Compensation	1,746.98	4,723.00		6,469.98
Total Personnel Services – Employee Benefits	\$156,514.23	\$373,447.28	\$46,829.00	\$576,790.51
300 Purchased Professional and Technical Services				
310 Official / Administrative Services		1,500.00		1,500.00
322 Professional Educational Services – Ius	537,028.15	436,386.65		973,414.80
Total Purchased Professional and Technical Services	\$537,028.15	\$437,886.65		\$974,914.80
400 Purchased Property Services				
440 Rentals	1,071.25	1,071.25		2,142.50
Total Purchased Property Services	\$1,071.25	\$1,071.25		\$2,142.50
500 Other Purchased Services				
510 Student Transportation Services		741.75		741.75
562 Tuition To Pennsylvania Charter Schools	7,933.46	92,226.52		100,159.98
580 Travel	845.50	3,176.34		4,021.84
Total Other Purchased Services	\$8,778.96	\$96,144.61		\$104,923.57
600 Supplies				
610 General Supplies	305.69	1,602.01		1,907.70
640 Books and Periodicals		241.43		241.43
Total Supplies	\$305.69	\$1,843.44		\$2,149.13
700 Property				
752 Capital Equipment – Original and Additional		1,779.83		1,779.83
Total Property		\$1,779.83		\$1,779.83
800 Other Objects				
810 Dues and Fees	460.00	1,015.00		1,475.00
Total Other Objects	\$460.00	\$1,015.00		\$1,475.00
Total 1200 Special Programs – Elementary / Secondary	\$972,917.47	\$1,433,939.10	\$252,666.00	\$2,659,522.57

General Fund (10)

1210 Life Skills Support

300 Purchased Professional and Technical Services

322 Professional Educational Services – lus

Total Purchased Professional and Technical Services

Total 1210 Life Skills Support

	<u>Elementary</u>	<u>Secondary</u>	<u>Federal</u>	<u>Total</u>
	83,533.40	49,301.75		132,835.15
	\$83,533.40	\$49,301.75		\$132,835.15
	\$83,533.40	\$49,301.75		\$132,835.15

General Fund (10)

1220 Sensory Support

	<u>Elementary</u>	<u>Secondary</u>	<u>Federal</u>	<u>Total</u>
300 <u>Purchased Professional and Technical Services</u>				
322 Professional Educational Services – lus	40,821.45	52,559.60		93,381.05
Total Purchased Professional and Technical Services	\$40,821.45	\$52,559.60		\$93,381.05
Total 1220 Sensory Support	\$40,821.45	\$52,559.60		\$93,381.05

General Fund (10)

1230 Emotional Support

	<u>Elementary</u>	<u>Secondary</u>	<u>Federal</u>	<u>Total</u>
100 Personnel Services – Salaries				
100 Personnel Services – Salaries		1,900.00		1,900.00
Total Personnel Services – Salaries		\$1,900.00		\$1,900.00
200 Personnel Services – Employee Benefits				
210 Group Insurance – Contracted Provider		2,022.80		2,022.80
220 Social Security Contributions		145.29		145.29
250 Unemployment Compensation		19.00		19.00
260 Workers' Compensation		12.36		12.36
Total Personnel Services – Employee Benefits		\$2,199.45		\$2,199.45
300 Purchased Professional and Technical Services				
322 Professional Educational Services – Ius	160,530.70	128,000.65		288,531.35
Total Purchased Professional and Technical Services	\$160,530.70	\$128,000.65		\$288,531.35
600 Supplies				
610 General Supplies		621.45		621.45
Total Supplies		\$621.45		\$621.45
Total 1230 Emotional Support	\$160,530.70	\$132,721.55		\$293,252.25

General Fund (10)

1240 Academic Support

	<u>Elementary</u>	<u>Secondary</u>	<u>Federal</u>	<u>Total</u>
100 Personnel Services – Salaries				
100 Personnel Services – Salaries	268,759.19	518,851.04	205,837.00	993,447.23
Total Personnel Services – Salaries	\$268,759.19	\$518,851.04	\$205,837.00	\$993,447.23
200 Personnel Services – Employee Benefits				
210 Group Insurance – Contracted Provider	52,128.81	110,265.65	32,617.32	195,011.78
220 Social Security Contributions	19,804.92	38,666.53	14,211.68	72,683.13
230 PSERS Retirement Contributions	79,878.67	213,075.84		292,954.51
250 Unemployment Compensation	2,954.85	4,529.17		7,484.02
260 Workers' Compensation	1,746.98	4,710.64		6,457.62
Total Personnel Services – Employee Benefits	\$156,514.23	\$371,247.83	\$46,829.00	\$574,591.06
300 Purchased Professional and Technical Services				
310 Official / Administrative Services		1,500.00		1,500.00
322 Professional Educational Services – lus	149,688.55	43,262.77		192,951.32
Total Purchased Professional and Technical Services	\$149,688.55	\$44,762.77		\$194,451.32
400 Purchased Property Services				
440 Rentals	1,071.25	1,071.25		2,142.50
Total Purchased Property Services	\$1,071.25	\$1,071.25		\$2,142.50
500 Other Purchased Services				
510 Student Transportation Services		741.75		741.75
580 Travel	845.50	3,176.34		4,021.84
Total Other Purchased Services	\$845.50	\$3,918.09		\$4,763.59
600 Supplies				
610 General Supplies	305.69	980.56		1,286.25
640 Books and Periodicals		241.43		241.43
Total Supplies	\$305.69	\$1,221.99		\$1,527.68
700 Property				
752 Capital Equipment – Original and Additional		1,779.83		1,779.83
Total Property		\$1,779.83		\$1,779.83
800 Other Objects				
810 Dues and Fees	460.00	1,015.00		1,475.00
Total Other Objects	\$460.00	\$1,015.00		\$1,475.00
Total 1240 Academic Support	\$577,644.41	\$943,867.80	\$252,666.00	\$1,774,178.21

General Fund (10)

	<u>Elementary</u>	<u>Secondary</u>	<u>Federal</u>	<u>Total</u>
1241 Learning Support – Public				
100 Personnel Services – Salaries				
100 Personnel Services – Salaries	268,759.19	518,851.04	205,837.00	993,447.23
Total Personnel Services – Salaries	\$268,759.19	\$518,851.04	\$205,837.00	\$993,447.23
200 Personnel Services – Employee Benefits				
210 Group Insurance – Contracted Provider	52,128.81	110,265.65	32,617.32	195,011.78
220 Social Security Contributions	19,804.92	38,666.53	14,211.68	72,683.13
230 PSERS Retirement Contributions	79,878.67	213,075.84		292,954.51
250 Unemployment Compensation	2,954.85	4,529.17		7,484.02
260 Workers' Compensation	1,746.98	4,710.64		6,457.62
Total Personnel Services – Employee Benefits	\$156,514.23	\$371,247.83	\$46,829.00	\$574,591.06
300 Purchased Professional and Technical Services				
310 Official / Administrative Services		1,500.00		1,500.00
322 Professional Educational Services – Ius	149,688.55	43,262.77		192,951.32
Total Purchased Professional and Technical Services	\$149,688.55	\$44,762.77		\$194,451.32
600 Supplies				
610 General Supplies	305.69	593.17		898.86
640 Books and Periodicals		241.43		241.43
Total Supplies	\$305.69	\$834.60		\$1,140.29
700 Property				
752 Capital Equipment – Original and Additional		1,779.83		1,779.83
Total Property		\$1,779.83		\$1,779.83
Total 1241 Learning Support – Public	\$575,267.66	\$937,476.07	\$252,666.00	\$1,765,409.73

General Fund (10)

1243 Gifted Support

	<u>Elementary</u>	<u>Secondary</u>	<u>Federal</u>	<u>Total</u>
400 <u>Purchased Property Services</u>				
440 Rentals	1,071.25	1,071.25		2,142.50
Total Purchased Property Services	\$1,071.25	\$1,071.25		\$2,142.50
500 <u>Other Purchased Services</u>				
510 Student Transportation Services		741.75		741.75
580 Travel	845.50	3,176.34		4,021.84
Total Other Purchased Services	\$845.50	\$3,918.09		\$4,763.59
600 <u>Supplies</u>				
610 General Supplies		387.39		387.39
Total Supplies		\$387.39		\$387.39
800 <u>Other Objects</u>				
810 Dues and Fees	460.00	1,015.00		1,475.00
Total Other Objects	\$460.00	\$1,015.00		\$1,475.00
Total 1243 Gifted Support	\$2,376.75	\$6,391.73		\$8,768.48

General Fund (10)

1260 Physical Support

300 Purchased Professional and Technical Services

322 Professional Educational Services – lus

Total Purchased Professional and Technical Services

Total 1260 Physical Support

	<u>Elementary</u>	<u>Secondary</u>	<u>Federal</u>	<u>Total</u>
	7,196.15	3,747.43		10,943.58
	\$7,196.15	\$3,747.43		\$10,943.58
	\$7,196.15	\$3,747.43		\$10,943.58

General Fund (10)

1270 Multi-Handicapped Support

300 Purchased Professional and Technical Services

322 Professional Educational Services – lus

Total Purchased Professional and Technical Services

Total 1270 Multi-Handicapped Support

	<u>Elementary</u>	<u>Secondary</u>	<u>Federal</u>	<u>Total</u>
	73,058.20	76,453.50		149,511.70
	\$73,058.20	\$76,453.50		\$149,511.70
	\$73,058.20	\$76,453.50		\$149,511.70

General Fund (10)

	<u>Elementary</u>	<u>Secondary</u>	<u>Federal</u>	<u>Total</u>
1290 Special Programs - Other Support				
300 <u>Purchased Professional and Technical Services</u>				
322 Professional Educational Services – lus	22,199.70	83,060.95		105,260.65
Total Purchased Professional and Technical Services	\$22,199.70	\$83,060.95		\$105,260.65
500 <u>Other Purchased Services</u>				
562 Tuition To Pennsylvania Charter Schools	7,933.46	92,226.52		100,159.98
Total Other Purchased Services	\$7,933.46	\$92,226.52		\$100,159.98
Total 1290 Special Programs - Other Support	\$30,133.16	\$175,287.47		\$205,420.63

General Fund (10)

1300 Vocational Education

	<u>Elementary</u>	<u>Secondary</u>	<u>Federal</u>	<u>Total</u>
100 Personnel Services – Salaries				
100 Personnel Services – Salaries		231,893.00		231,893.00
Total Personnel Services – Salaries		\$231,893.00		\$231,893.00
200 Personnel Services – Employee Benefits				
210 Group Insurance – Contracted Provider		40,594.30		40,594.30
220 Social Security Contributions		16,947.31		16,947.31
230 PSERS Retirement Contributions		69,637.37		69,637.37
250 Unemployment Compensation		753.51		753.51
260 Workers' Compensation		1,507.24		1,507.24
Total Personnel Services – Employee Benefits		\$129,439.73		\$129,439.73
500 Other Purchased Services				
564 Tuition To Career and Technology Centers		241,486.39		241,486.39
Total Other Purchased Services		\$241,486.39		\$241,486.39
600 Supplies				
610 General Supplies		8,256.01		8,256.01
650 Supplies & Fees – Technology Related		2,089.97		2,089.97
Total Supplies		\$10,345.98		\$10,345.98
Total 1300 Vocational Education		\$613,165.10		\$613,165.10

General Fund (10)

	<u>Elementary</u>	<u>Secondary</u>	<u>Federal</u>	<u>Total</u>
1400 Other Instructional Programs – Elementary / Secondary				
100 Personnel Services – Salaries				
100 Personnel Services – Salaries	1,973.10	8,939.00		10,912.10
Total Personnel Services – Salaries	\$1,973.10	\$8,939.00		\$10,912.10
200 Personnel Services – Employee Benefits				
220 Social Security Contributions	149.66	640.63		790.29
230 PSERS Retirement Contributions	592.53	2,217.74		2,810.27
250 Unemployment Compensation	3.79	51.22		55.01
260 Workers' Compensation	12.85	58.08		70.93
Total Personnel Services – Employee Benefits	\$758.83	\$2,967.67		\$3,726.50
300 Purchased Professional and Technical Services				
310 Official / Administrative Services	73,948.61	123,744.78		197,693.39
Total Purchased Professional and Technical Services	\$73,948.61	\$123,744.78		\$197,693.39
Total 1400 Other Instructional Programs – Elementary / Secondary	\$76,680.54	\$135,651.45		\$212,331.99

General Fund (10)

1410 Drivers' Education

300 Purchased Professional and Technical Services

310 Official / Administrative Services

Total Purchased Professional and Technical Services

Total 1410 Drivers' Education

Elementary

Secondary

Federal

Total

2,189.60

2,189.60

\$2,189.60

\$2,189.60

\$2,189.60

\$2,189.60

General Fund (10)

	<u>Elementary</u>	<u>Secondary</u>	<u>Federal</u>	<u>Total</u>
1430 Homebound Instruction				
100 Personnel Services – Salaries				
100 Personnel Services – Salaries	1,973.10	8,939.00		10,912.10
Total Personnel Services – Salaries	\$1,973.10	\$8,939.00		\$10,912.10
200 Personnel Services – Employee Benefits				
220 Social Security Contributions	149.66	640.63		790.29
230 PSERS Retirement Contributions	592.53	2,217.74		2,810.27
250 Unemployment Compensation	3.79	51.22		55.01
260 Workers' Compensation	12.85	58.08		70.93
Total Personnel Services – Employee Benefits	\$758.83	\$2,967.67		\$3,726.50
Total 1430 Homebound Instruction	\$2,731.93	\$11,906.67		\$14,638.60

General Fund (10)

	<u>Elementary</u>	<u>Secondary</u>	<u>Federal</u>	<u>Total</u>
1440 Alternative Regular Education Programs				
300 <u>Purchased Professional and Technical Services</u>				
310 Official / Administrative Services	73,948.61	121,555.18		195,503.79
Total Purchased Professional and Technical Services	\$73,948.61	\$121,555.18		\$195,503.79
Total 1440 Alternative Regular Education Programs	\$73,948.61	\$121,555.18		\$195,503.79

General Fund (10)

	<u>Elementary</u>	<u>Secondary</u>	<u>Federal</u>	<u>Total</u>
1442 Alternative Education Programs				
300 Purchased Professional and Technical Services				
310 Official / Administrative Services	73,948.61	121,555.18		195,503.79
Total Purchased Professional and Technical Services	\$73,948.61	\$121,555.18		\$195,503.79
Total 1442 Alternative Education Programs	\$73,948.61	\$121,555.18		\$195,503.79

General Fund (10)

	<u>Elementary</u>	<u>Secondary</u>	<u>Federal</u>	<u>Total</u>
1700 Higher Education Programs for Secondary Students				
500 Other Purchased Services				
566 Tuition To Institutions of Higher Education and Technical Institutes				1,000.00
Total Other Purchased Services				\$1,000.00
Total 1700 Higher Education Programs for Secondary Students				\$1,000.00

General Fund (10)

2000 Support Services

Total

100 Personnel Services – Salaries

100 Personnel Services – Salaries 2,836,486.25

Total Personnel Services – Salaries \$2,836,486.25

200 Personnel Services – Employee Benefits

210 Group Insurance – Contracted Provider 703,320.17

220 Social Security Contributions 206,598.95

230 PSERS Retirement Contributions 797,291.08

240 Tuition Reimbursement 55,764.76

250 Unemployment Compensation 14,010.78

260 Workers' Compensation 18,377.25

291 Other Retirement Plans 2,261.95

299 All Other Employee Benefits 3,604.28

Total Personnel Services – Employee Benefits \$1,801,229.22

300 Purchased Professional and Technical Services

310 Official / Administrative Services 226,143.21

322 Professional Educational Services – Ius 208,226.00

324 Professional Educational Services – Employee Training and Development Services 3,120.00

329 Professional Educational Services – Other 30.34

340 Technical Services 16,888.67

Total Purchased Professional and Technical Services \$454,408.22

400 Purchased Property Services

410 Cleaning Services 22,204.00

420 Utility Services 40,363.38

430 Repairs and Maintenance Services 105,502.41

440 Rentals 12,695.81

Total Purchased Property Services \$180,765.60

500 Other Purchased Services

515 Public Carriers 7,763.74

520 Insurance – General 321.00

522 Automotive Liability Insurance 18,177.00

523 General Property and Liability Insurance 61,867.00

529 Other Insurance 8,225.00

530 Communications 17,345.92

549 Other Advertising/Public Relations 13,220.23

580 Travel 37,789.22

Total Other Purchased Services \$164,709.11

600 Supplies

610 General Supplies 274,702.94

620 Energy 383,027.59

640 Books and Periodicals 13,558.04

650 Supplies & Fees – Technology Related 795.00

Total Supplies \$672,083.57

General Fund (10)

2000 Support Services

Total

700 Property

752 Capital Equipment – Original and Additional

48,126.35

756 Capitalized Technology Hardware and Equipment – Original

279.00

Total Property

\$48,405.35

800 Other Objects

810 Dues and Fees

41,563.54

Total Other Objects

\$41,563.54

Total 2000 Support Services

\$6,199,650.86

General Fund (10)

2100 Support Services – Students

100 Personnel Services – Salaries

	<u>Elementary</u>	<u>Secondary</u>	<u>Federal</u>	<u>Total</u>
100 Personnel Services – Salaries	188,357.37	298,818.30		487,175.67
Total Personnel Services – Salaries	\$188,357.37	\$298,818.30		\$487,175.67

200 Personnel Services – Employee Benefits

210 Group Insurance – Contracted Provider	24,635.93	55,370.64		80,006.57
220 Social Security Contributions	13,790.98	21,662.68		35,453.66
230 PSERS Retirement Contributions	55,582.91	87,550.13		143,133.04
250 Unemployment Compensation	519.99	838.99		1,358.98
260 Workers' Compensation	1,217.79	1,929.14		3,146.93
Total Personnel Services – Employee Benefits	\$95,747.60	\$167,351.58		\$263,099.18

300 Purchased Professional and Technical Services

322 Professional Educational Services – lus	41,996.73	83,993.47		125,990.20
Total Purchased Professional and Technical Services	\$41,996.73	\$83,993.47		\$125,990.20

500 Other Purchased Services

580 Travel	831.84	3,225.06		4,056.90
Total Other Purchased Services	\$831.84	\$3,225.06		\$4,056.90

600 Supplies

610 General Supplies	5,275.40	4,977.76		10,253.16
640 Books and Periodicals	500.02	1,000.03		1,500.05
650 Supplies & Fees – Technology Related	265.00	530.00		795.00
Total Supplies	\$6,040.42	\$6,507.79		\$12,548.21

700 Property

756 Capitalized Technology Hardware and Equipment – Original		279.00		279.00
Total Property		\$279.00		\$279.00

800 Other Objects

810 Dues and Fees		15,173.00		15,173.00
Total Other Objects		\$15,173.00		\$15,173.00

Total 2100 Support Services – Students

	\$332,973.96	\$575,348.20		\$908,322.16
--	---------------------	---------------------	--	---------------------

General Fund (10)

	<u>Elementary</u>	<u>Secondary</u>	<u>Federal</u>	<u>Total</u>
2110 Supervision of Student Services				
100 Personnel Services – Salaries				
100 Personnel Services – Salaries	43,917.42	87,834.83		131,752.25
Total Personnel Services – Salaries	\$43,917.42	\$87,834.83		\$131,752.25
200 Personnel Services – Employee Benefits				
210 Group Insurance – Contracted Provider	5,248.14	10,496.29		15,744.43
220 Social Security Contributions	3,247.61	6,495.21		9,742.82
230 PSERS Retirement Contributions	13,188.45	26,376.91		39,565.36
250 Unemployment Compensation	129.99	259.98		389.97
260 Workers' Compensation	285.51	571.01		856.52
Total Personnel Services – Employee Benefits	\$22,099.70	\$44,199.40		\$66,299.10
500 Other Purchased Services				
580 Travel	831.84	3,225.06		4,056.90
Total Other Purchased Services	\$831.84	\$3,225.06		\$4,056.90
600 Supplies				
610 General Supplies	2,194.11	4,388.21		6,582.32
640 Books and Periodicals	500.02	1,000.03		1,500.05
650 Supplies & Fees – Technology Related	265.00	530.00		795.00
Total Supplies	\$2,959.13	\$5,918.24		\$8,877.37
700 Property				
756 Capitalized Technology Hardware and Equipment – Original		279.00		279.00
Total Property		\$279.00		\$279.00
Total 2110 Supervision of Student Services	\$69,808.09	\$141,456.53		\$211,264.62

General Fund (10)

	<u>Elementary</u>	<u>Secondary</u>	<u>Federal</u>	<u>Total</u>
2111 Supervision of Student Services – Head of Component				
100 Personnel Services – Salaries				
100 Personnel Services – Salaries	43,917.42	87,834.83		131,752.25
Total Personnel Services – Salaries	\$43,917.42	\$87,834.83		\$131,752.25
200 Personnel Services – Employee Benefits				
210 Group Insurance – Contracted Provider	5,248.14	10,496.29		15,744.43
220 Social Security Contributions	3,247.61	6,495.21		9,742.82
230 PSERS Retirement Contributions	13,188.45	26,376.91		39,565.36
250 Unemployment Compensation	129.99	259.98		389.97
260 Workers' Compensation	285.51	571.01		856.52
Total Personnel Services – Employee Benefits	\$22,099.70	\$44,199.40		\$66,299.10
500 Other Purchased Services				
580 Travel	831.84	3,225.06		4,056.90
Total Other Purchased Services	\$831.84	\$3,225.06		\$4,056.90
600 Supplies				
610 General Supplies	2,194.11	4,388.21		6,582.32
640 Books and Periodicals	500.02	1,000.03		1,500.05
650 Supplies & Fees – Technology Related	265.00	530.00		795.00
Total Supplies	\$2,959.13	\$5,918.24		\$8,877.37
700 Property				
756 Capitalized Technology Hardware and Equipment – Original		279.00		279.00
Total Property		\$279.00		\$279.00
Total 2111 Supervision of Student Services – Head of Component	\$69,808.09	\$141,456.53		\$211,264.62

General Fund (10)

	<u>Elementary</u>	<u>Secondary</u>	<u>Federal</u>	<u>Total</u>
2120 Guidance Services				
100 Personnel Services – Salaries				
100 Personnel Services – Salaries	144,439.95	210,983.47		355,423.42
Total Personnel Services – Salaries	\$144,439.95	\$210,983.47		\$355,423.42
200 Personnel Services – Employee Benefits				
210 Group Insurance – Contracted Provider	19,387.79	44,874.35		64,262.14
220 Social Security Contributions	10,543.37	15,167.47		25,710.84
230 PSERS Retirement Contributions	42,394.46	61,173.22		103,567.68
250 Unemployment Compensation	390.00	579.01		969.01
260 Workers' Compensation	932.28	1,358.13		2,290.41
Total Personnel Services – Employee Benefits	\$73,647.90	\$123,152.18		\$196,800.08
600 Supplies				
610 General Supplies	3,081.29	589.55		3,670.84
Total Supplies	\$3,081.29	\$589.55		\$3,670.84
800 Other Objects				
810 Dues and Fees		15,173.00		15,173.00
Total Other Objects		\$15,173.00		\$15,173.00
Total 2120 Guidance Services	\$221,169.14	\$349,898.20		\$571,067.34

General Fund (10)

2140 Psychological Services

300 Purchased Professional and Technical Services

322 Professional Educational Services – lus

Total Purchased Professional and Technical Services

Total 2140 Psychological Services

	<u>Elementary</u>	<u>Secondary</u>	<u>Federal</u>	<u>Total</u>
	41,996.73	83,993.47		125,990.20
	\$41,996.73	\$83,993.47		\$125,990.20
	\$41,996.73	\$83,993.47		\$125,990.20

General Fund (10)

2200 Support Services – Instructional Staff

	<u>Elementary</u>	<u>Secondary</u>	<u>Federal</u>	<u>Total</u>
100 Personnel Services – Salaries				
100 Personnel Services – Salaries	97,773.12	97,325.91		195,099.03
Total Personnel Services – Salaries	\$97,773.12	\$97,325.91		\$195,099.03
200 Personnel Services – Employee Benefits				
210 Group Insurance – Contracted Provider	20,131.30	34,720.94		54,852.24
220 Social Security Contributions	7,065.62	6,857.61		13,923.23
230 PSERS Retirement Contributions	28,564.33	29,027.60		57,591.93
240 Tuition Reimbursement	24,755.36	31,009.40		55,764.76
250 Unemployment Compensation	480.10	807.40		1,287.50
260 Workers' Compensation	635.37	632.25		1,267.62
Total Personnel Services – Employee Benefits	\$81,632.08	\$103,055.20		\$184,687.28
300 Purchased Professional and Technical Services				
322 Professional Educational Services – Ius	27,411.93	54,823.87		82,235.80
324 Professional Educational Services – Employee Training and Development Services	3,120.00			3,120.00
Total Purchased Professional and Technical Services	\$30,531.93	\$54,823.87		\$85,355.80
400 Purchased Property Services				
430 Repairs and Maintenance Services		293.94		293.94
Total Purchased Property Services		\$293.94		\$293.94
500 Other Purchased Services				
580 Travel	6,264.20	12,528.42		18,792.62
Total Other Purchased Services	\$6,264.20	\$12,528.42		\$18,792.62
600 Supplies				
610 General Supplies	12,731.56	32,690.28		45,421.84
640 Books and Periodicals		6,012.25		6,012.25
Total Supplies	\$12,731.56	\$38,702.53		\$51,434.09
700 Property				
752 Capital Equipment – Original and Additional	1,271.67	2,543.33		3,815.00
Total Property	\$1,271.67	\$2,543.33		\$3,815.00
800 Other Objects				
810 Dues and Fees		210.00		210.00
Total Other Objects		\$210.00		\$210.00
Total 2200 Support Services – Instructional Staff	\$230,204.56	\$309,483.20		\$539,687.76

General Fund (10)

2240 Computer-Assisted Instruction Support Services

	<u>Elementary</u>	<u>Secondary</u>	<u>Federal</u>	<u>Total</u>
100 Personnel Services – Salaries				
100 Personnel Services – Salaries	29,011.23	34,462.88		63,474.11
Total Personnel Services – Salaries	\$29,011.23	\$34,462.88		\$63,474.11
200 Personnel Services – Employee Benefits				
210 Group Insurance – Contracted Provider	486.00	18,635.18		19,121.18
220 Social Security Contributions	2,219.36	2,388.85		4,608.21
230 PSERS Retirement Contributions	8,141.38	10,305.05		18,446.43
250 Unemployment Compensation	194.96	397.87		592.83
260 Workers' Compensation	188.64	223.98		412.62
Total Personnel Services – Employee Benefits	\$11,230.34	\$31,950.93		\$43,181.27
300 Purchased Professional and Technical Services				
322 Professional Educational Services – lus	27,411.93	54,823.87		82,235.80
Total Purchased Professional and Technical Services	\$27,411.93	\$54,823.87		\$82,235.80
500 Other Purchased Services				
580 Travel	76.62	153.25		229.87
Total Other Purchased Services	\$76.62	\$153.25		\$229.87
600 Supplies				
610 General Supplies	10,899.47	31,037.25		41,936.72
Total Supplies	\$10,899.47	\$31,037.25		\$41,936.72
700 Property				
752 Capital Equipment – Original and Additional	1,271.67	2,543.33		3,815.00
Total Property	\$1,271.67	\$2,543.33		\$3,815.00
Total 2240 Computer-Assisted Instruction Support Services	\$79,901.26	\$154,971.51		\$234,872.77

General Fund (10)

	<u>Elementary</u>	<u>Secondary</u>	<u>Federal</u>	<u>Total</u>
2250 School Library Services				
100 Personnel Services – Salaries				
100 Personnel Services – Salaries	49,485.57	15,720.88		65,206.45
Total Personnel Services – Salaries	\$49,485.57	\$15,720.88		\$65,206.45
200 Personnel Services – Employee Benefits				
210 Group Insurance – Contracted Provider	13,922.93	4,641.01		18,563.94
220 Social Security Contributions	3,474.78	1,099.02		4,573.80
230 PSERS Retirement Contributions	14,711.92	4,721.07		19,432.99
250 Unemployment Compensation	147.14	48.75		195.89
260 Workers' Compensation	321.55	102.08		423.63
Total Personnel Services – Employee Benefits	\$32,578.32	\$10,611.93		\$43,190.25
400 Purchased Property Services				
430 Repairs and Maintenance Services		293.94		293.94
Total Purchased Property Services		\$293.94		\$293.94
600 Supplies				
610 General Supplies	1,434.82	858.50		2,293.32
640 Books and Periodicals		6,012.25		6,012.25
Total Supplies	\$1,434.82	\$6,870.75		\$8,305.57
800 Other Objects				
810 Dues and Fees		210.00		210.00
Total Other Objects		\$210.00		\$210.00
Total 2250 School Library Services	\$83,498.71	\$33,707.50		\$117,206.21

General Fund (10)

2260 Instruction and Curriculum Development Services

	<u>Elementary</u>	<u>Secondary</u>	<u>Federal</u>	<u>Total</u>
100 Personnel Services – Salaries				
100 Personnel Services – Salaries	17,576.32	42,152.65		59,728.97
Total Personnel Services – Salaries	\$17,576.32	\$42,152.65		\$59,728.97
200 Personnel Services – Employee Benefits				
210 Group Insurance – Contracted Provider	5,722.37	11,444.75		17,167.12
220 Social Security Contributions	1,245.80	3,001.34		4,247.14
230 PSERS Retirement Contributions	5,200.51	12,503.13		17,703.64
250 Unemployment Compensation	121.00	311.99		432.99
260 Workers' Compensation	114.14	273.79		387.93
Total Personnel Services – Employee Benefits	\$12,403.82	\$27,535.00		\$39,938.82
300 Purchased Professional and Technical Services				
324 Professional Educational Services – Employee Training and Development Services	2,120.00			2,120.00
Total Purchased Professional and Technical Services	\$2,120.00			\$2,120.00
600 Supplies				
610 General Supplies	397.27	794.53		1,191.80
Total Supplies	\$397.27	\$794.53		\$1,191.80
Total 2260 Instruction and Curriculum Development Services	\$32,497.41	\$70,482.18		\$102,979.59

General Fund (10)

2270 Instructional Staff Professional Development Services

	<u>Elementary</u>	<u>Secondary</u>	<u>Federal</u>	<u>Total</u>
100 Personnel Services – Salaries				
100 Personnel Services – Salaries	1,700.00	4,989.50		6,689.50
Total Personnel Services – Salaries	\$1,700.00	\$4,989.50		\$6,689.50
200 Personnel Services – Employee Benefits				
220 Social Security Contributions	125.68	368.40		494.08
230 PSERS Retirement Contributions	510.52	1,498.35		2,008.87
240 Tuition Reimbursement	24,755.36	31,009.40		55,764.76
250 Unemployment Compensation	17.00	48.79		65.79
260 Workers' Compensation	11.04	32.40		43.44
Total Personnel Services – Employee Benefits	\$25,419.60	\$32,957.34		\$58,376.94
300 Purchased Professional and Technical Services				
324 Professional Educational Services – Employee Training and Development Services	1,000.00			1,000.00
Total Purchased Professional and Technical Services	\$1,000.00			\$1,000.00
500 Other Purchased Services				
580 Travel	6,187.58	12,375.17		18,562.75
Total Other Purchased Services	\$6,187.58	\$12,375.17		\$18,562.75
Total 2270 Instructional Staff Professional Development Services	\$34,307.18	\$50,322.01		\$84,629.19

General Fund (10)

2300 Support Services – Administration

	<u>Elementary</u>	<u>Secondary</u>	<u>Federal</u>	<u>Total</u>
100 Personnel Services – Salaries				
100 Personnel Services – Salaries	225,631.10	513,962.89		923,787.79
Total Personnel Services – Salaries	\$225,631.10	\$513,962.89		\$923,787.79
200 Personnel Services – Employee Benefits				
210 Group Insurance – Contracted Provider	66,179.32	134,329.57		236,228.05
220 Social Security Contributions	16,462.57	36,489.26		67,525.32
230 PSERS Retirement Contributions	64,703.25	145,579.10		264,065.38
250 Unemployment Compensation	841.20	1,987.72		3,218.92
260 Workers' Compensation	1,468.33	3,288.69		5,954.20
299 All Other Employee Benefits				3,604.28
Total Personnel Services – Employee Benefits	\$149,654.67	\$321,674.34		\$580,596.15
300 Purchased Professional and Technical Services				
310 Official / Administrative Services		1,729.00		189,156.86
329 Professional Educational Services – Other				30.34
Total Purchased Professional and Technical Services		\$1,729.00		\$189,187.20
400 Purchased Property Services				
430 Repairs and Maintenance Services	1,000.00			5,542.00
440 Rentals	765.40	1,205.06		2,314.32
Total Purchased Property Services	\$1,765.40	\$1,205.06		\$7,856.32
500 Other Purchased Services				
520 Insurance – General				321.00
530 Communications	512.25	790.34		1,302.59
549 Other Advertising/Public Relations				13,220.23
580 Travel	1,903.10	7,866.49		12,178.44
Total Other Purchased Services	\$2,415.35	\$8,656.83		\$27,022.26
600 Supplies				
610 General Supplies	33,792.03	33,119.94		71,056.10
640 Books and Periodicals	4,959.67	925.60		6,045.74
Total Supplies	\$38,751.70	\$34,045.54		\$77,101.84
700 Property				
752 Capital Equipment – Original and Additional	14,596.00	12,639.20		27,235.20
Total Property	\$14,596.00	\$12,639.20		\$27,235.20
800 Other Objects				
810 Dues and Fees	1,308.00	4,488.48		22,723.02
Total Other Objects	\$1,308.00	\$4,488.48		\$22,723.02
Total 2300 Support Services – Administration	\$434,122.22	\$898,401.34		\$1,855,509.78

General Fund (10)

2310 Board Services

Elementary

Secondary

Federal

Total

300 Purchased Professional and Technical Services

310 Official / Administrative Services

20,577.60

Total Purchased Professional and Technical Services

\$20,577.60

500 Other Purchased Services

520 Insurance – General

321.00

549 Other Advertising/Public Relations

13,220.23

Total Other Purchased Services

\$13,541.23

600 Supplies

610 General Supplies

1,734.43

Total Supplies

\$1,734.43

800 Other Objects

810 Dues and Fees

12,438.27

Total Other Objects

\$12,438.27

Total 2310 Board Services

\$48,291.53

General Fund (10)

	<u>Elementary</u>	<u>Secondary</u>	<u>Federal</u>	<u>Total</u>
2330 Tax Assessment and Collection Services				
200 Personnel Services – Employee Benefits				
220 Social Security Contributions				1,409.04
Total Personnel Services – Employee Benefits				\$1,409.04
300 Purchased Professional and Technical Services				
310 Official / Administrative Services				137,697.97
Total Purchased Professional and Technical Services				\$137,697.97
Total 2330 Tax Assessment and Collection Services				\$139,107.01

General Fund (10)

2350 Legal and Accounting Services

Elementary

Secondary

Federal

Total

300 Purchased Professional and Technical Services

310 Official / Administrative Services

17,976.29

Total Purchased Professional and Technical Services

\$17,976.29

Total 2350 Legal and Accounting Services

\$17,976.29

General Fund (10)

	<u>Elementary</u>	<u>Secondary</u>	<u>Federal</u>	<u>Total</u>
2360 Office of the Superintendent / Executive Director Services				
100 Personnel Services – Salaries				
100 Personnel Services – Salaries				184,193.80
Total Personnel Services – Salaries				\$184,193.80
200 Personnel Services – Employee Benefits				
210 Group Insurance – Contracted Provider				35,719.16
220 Social Security Contributions				13,164.45
230 PSERS Retirement Contributions				53,783.03
250 Unemployment Compensation				390.00
260 Workers' Compensation				1,197.18
299 All Other Employee Benefits				3,604.28
Total Personnel Services – Employee Benefits				\$107,858.10
300 Purchased Professional and Technical Services				
329 Professional Educational Services – Other				30.34
Total Purchased Professional and Technical Services				\$30.34
400 Purchased Property Services				
430 Repairs and Maintenance Services				4,542.00
440 Rentals				343.86
Total Purchased Property Services				\$4,885.86
500 Other Purchased Services				
530 Communications	195.00	390.00		585.00
580 Travel				2,408.85
Total Other Purchased Services	\$195.00	\$390.00		\$2,993.85
600 Supplies				
610 General Supplies				2,409.70
640 Books and Periodicals				160.47
Total Supplies				\$2,570.17
800 Other Objects				
810 Dues and Fees				1,859.00
Total Other Objects				\$1,859.00
Total 2360 Office of the Superintendent / Executive Director Services	\$195.00	\$390.00		\$304,391.12

General Fund (10)

2380 Office of the Principal Services

	<u>Elementary</u>	<u>Secondary</u>	<u>Federal</u>	<u>Total</u>
100 Personnel Services – Salaries				
100 Personnel Services – Salaries	225,631.10	513,962.89		739,593.99
Total Personnel Services – Salaries	\$225,631.10	\$513,962.89		\$739,593.99
200 Personnel Services – Employee Benefits				
210 Group Insurance – Contracted Provider	66,179.32	134,329.57		200,508.89
220 Social Security Contributions	16,462.57	36,489.26		52,951.83
230 PSERS Retirement Contributions	64,703.25	145,579.10		210,282.35
250 Unemployment Compensation	841.20	1,987.72		2,828.92
260 Workers' Compensation	1,468.33	3,288.69		4,757.02
Total Personnel Services – Employee Benefits	\$149,654.67	\$321,674.34		\$471,329.01
300 Purchased Professional and Technical Services				
310 Official / Administrative Services		1,729.00		1,729.00
Total Purchased Professional and Technical Services		\$1,729.00		\$1,729.00
400 Purchased Property Services				
430 Repairs and Maintenance Services	1,000.00			1,000.00
440 Rentals	765.40	1,205.06		1,970.46
Total Purchased Property Services	\$1,765.40	\$1,205.06		\$2,970.46
500 Other Purchased Services				
530 Communications	317.25	400.34		717.59
580 Travel	1,903.10	7,866.49		9,769.59
Total Other Purchased Services	\$2,220.35	\$8,266.83		\$10,487.18
600 Supplies				
610 General Supplies	33,792.03	33,119.94		66,911.97
640 Books and Periodicals	4,959.67	925.60		5,885.27
Total Supplies	\$38,751.70	\$34,045.54		\$72,797.24
700 Property				
752 Capital Equipment – Original and Additional	14,596.00	12,639.20		27,235.20
Total Property	\$14,596.00	\$12,639.20		\$27,235.20
800 Other Objects				
810 Dues and Fees	1,308.00	4,488.48		5,796.48
Total Other Objects	\$1,308.00	\$4,488.48		\$5,796.48
Total 2380 Office of the Principal Services	\$433,927.22	\$898,011.34		\$1,331,938.56

General Fund (10)

2390 Other Administration Services

Elementary

Secondary

Federal

Total

300 Purchased Professional and Technical Services

310 Official / Administrative Services

11,176.00

Total Purchased Professional and Technical Services

\$11,176.00

800 Other Objects

810 Dues and Fees

2,629.27

Total Other Objects

\$2,629.27

Total 2390 Other Administration Services

\$13,805.27

General Fund (10)

	<u>Elementary</u>	<u>Secondary</u>	<u>Federal</u>	<u>Total</u>
2400 Support Services – Pupil Health				
100 Personnel Services – Salaries				
100 Personnel Services – Salaries				139,947.73
Total Personnel Services – Salaries				\$139,947.73
200 Personnel Services – Employee Benefits				
210 Group Insurance – Contracted Provider				36,820.84
220 Social Security Contributions				9,693.79
230 PSERS Retirement Contributions				40,325.64
250 Unemployment Compensation				707.23
260 Workers' Compensation				909.87
Total Personnel Services – Employee Benefits				\$88,457.37
300 Purchased Professional and Technical Services				
310 Official / Administrative Services				8,800.00
Total Purchased Professional and Technical Services				\$8,800.00
500 Other Purchased Services				
580 Travel				109.87
Total Other Purchased Services				\$109.87
600 Supplies				
610 General Supplies				2,621.52
Total Supplies				\$2,621.52
Total 2400 Support Services – Pupil Health				\$239,936.49

General Fund (10)

2440 Nursing Services

	<u>Elementary</u>	<u>Secondary</u>	<u>Federal</u>	<u>Total</u>
100 Personnel Services – Salaries				
100 Personnel Services – Salaries				139,947.73
Total Personnel Services – Salaries				\$139,947.73
200 Personnel Services – Employee Benefits				
210 Group Insurance – Contracted Provider				36,820.84
220 Social Security Contributions				9,693.79
230 PSERS Retirement Contributions				40,325.64
250 Unemployment Compensation				707.23
260 Workers' Compensation				909.87
Total Personnel Services – Employee Benefits				\$88,457.37
300 Purchased Professional and Technical Services				
310 Official / Administrative Services				8,800.00
Total Purchased Professional and Technical Services				\$8,800.00
500 Other Purchased Services				
580 Travel				109.87
Total Other Purchased Services				\$109.87
600 Supplies				
610 General Supplies				2,621.52
Total Supplies				\$2,621.52
Total 2440 Nursing Services				\$239,936.49

General Fund (10)

2500 Support Services – Business

Elementary Secondary Federal Total

100 Personnel Services – Salaries

100 Personnel Services – Salaries 199,821.21

Total Personnel Services – Salaries \$199,821.21

200 Personnel Services – Employee Benefits

210 Group Insurance – Contracted Provider 54,923.95

220 Social Security Contributions 14,822.42

230 PSERS Retirement Contributions 59,678.90

250 Unemployment Compensation 1,015.83

260 Workers' Compensation 1,322.52

291 Other Retirement Plans 2,261.95

Total Personnel Services – Employee Benefits \$134,025.57

300 Purchased Professional and Technical Services

310 Official / Administrative Services 24,881.35

Total Purchased Professional and Technical Services \$24,881.35

400 Purchased Property Services

430 Repairs and Maintenance Services 4,914.00

440 Rentals 343.86

Total Purchased Property Services \$5,257.86

500 Other Purchased Services

530 Communications 975.00

580 Travel 1,563.44

Total Other Purchased Services \$2,538.44

600 Supplies

610 General Supplies 5,075.19

Total Supplies \$5,075.19

700 Property

752 Capital Equipment – Original and Additional 3,930.00

Total Property \$3,930.00

800 Other Objects

810 Dues and Fees 1,524.38

Total Other Objects \$1,524.38

Total 2500 Support Services – Business \$377,054.00

General Fund (10)

2510 Fiscal Services

Elementary Secondary Federal Total

100	<u>Personnel Services – Salaries</u>			
	100 Personnel Services – Salaries			199,821.21
Total Personnel Services – Salaries				\$199,821.21
200	<u>Personnel Services – Employee Benefits</u>			
	210 Group Insurance – Contracted Provider			54,923.95
	220 Social Security Contributions			14,822.42
	230 PSERS Retirement Contributions			59,678.90
	250 Unemployment Compensation			1,015.83
	260 Workers' Compensation			1,322.52
	291 Other Retirement Plans			2,261.95
Total Personnel Services – Employee Benefits				\$134,025.57
300	<u>Purchased Professional and Technical Services</u>			
	310 Official / Administrative Services			24,881.35
Total Purchased Professional and Technical Services				\$24,881.35
400	<u>Purchased Property Services</u>			
	430 Repairs and Maintenance Services			4,914.00
	440 Rentals			343.86
Total Purchased Property Services				\$5,257.86
500	<u>Other Purchased Services</u>			
	530 Communications			975.00
	580 Travel			1,563.44
Total Other Purchased Services				\$2,538.44
600	<u>Supplies</u>			
	610 General Supplies			5,075.19
Total Supplies				\$5,075.19
700	<u>Property</u>			
	752 Capital Equipment – Original and Additional			3,930.00
Total Property				\$3,930.00
800	<u>Other Objects</u>			
	810 Dues and Fees			1,524.38
Total Other Objects				\$1,524.38
Total 2510 Fiscal Services				\$377,054.00

General Fund (10)

2511 Supervision of Fiscal Services - Head of Component

Elementary Secondary Federal Total

100 Personnel Services – Salaries				
100 Personnel Services – Salaries				71,558.82
Total Personnel Services – Salaries				\$71,558.82
200 Personnel Services – Employee Benefits				
210 Group Insurance – Contracted Provider				9,514.37
220 Social Security Contributions				5,592.47
230 PSERS Retirement Contributions				22,493.65
250 Unemployment Compensation				198.77
260 Workers' Compensation				488.73
291 Other Retirement Plans				2,261.95
Total Personnel Services – Employee Benefits				\$40,549.94
300 Purchased Professional and Technical Services				
310 Official / Administrative Services				24,881.35
Total Purchased Professional and Technical Services				\$24,881.35
400 Purchased Property Services				
430 Repairs and Maintenance Services				4,914.00
440 Rentals				343.86
Total Purchased Property Services				\$5,257.86
500 Other Purchased Services				
530 Communications				975.00
580 Travel				1,563.44
Total Other Purchased Services				\$2,538.44
600 Supplies				
610 General Supplies				5,075.19
Total Supplies				\$5,075.19
700 Property				
752 Capital Equipment – Original and Additional				3,930.00
Total Property				\$3,930.00
800 Other Objects				
810 Dues and Fees				1,524.38
Total Other Objects				\$1,524.38
Total 2511 Supervision of Fiscal Services - Head of Component				\$155,315.98

General Fund (10)

2513 Receiving and Disbursing Funds Services

Elementary

Secondary

Federal

Total

100 Personnel Services – Salaries

100 Personnel Services – Salaries

31,000.00

Total Personnel Services – Salaries

\$31,000.00

200 Personnel Services – Employee Benefits

210 Group Insurance – Contracted Provider

17,142.44

220 Social Security Contributions

2,172.15

230 PSERS Retirement Contributions

9,309.28

250 Unemployment Compensation

195.03

260 Workers' Compensation

201.50

Total Personnel Services – Employee Benefits

\$29,020.40

Total 2513 Receiving and Disbursing Funds Services

\$60,020.40

General Fund (10)

2514 Payroll Services

	<u>Elementary</u>	<u>Secondary</u>	<u>Federal</u>	<u>Total</u>
100 Personnel Services – Salaries				
100 Personnel Services – Salaries				40,577.00
Total Personnel Services – Salaries				\$40,577.00
200 Personnel Services – Employee Benefits				
210 Group Insurance – Contracted Provider				7,652.11
220 Social Security Contributions				2,939.35
230 PSERS Retirement Contributions				10,878.38
250 Unemployment Compensation				230.07
260 Workers' Compensation				263.84
Total Personnel Services – Employee Benefits				\$21,963.75
Total 2514 Payroll Services				\$62,540.75

General Fund (10)

	<u>Elementary</u>	<u>Secondary</u>	<u>Federal</u>	<u>Total</u>
2515 Financial Accounting Services				
100 Personnel Services – Salaries				
100 Personnel Services – Salaries				42,000.00
Total Personnel Services – Salaries				\$42,000.00
200 Personnel Services – Employee Benefits				
210 Group Insurance – Contracted Provider				20,615.03
220 Social Security Contributions				2,995.00
230 PSERS Retirement Contributions				12,612.56
250 Unemployment Compensation				195.01
260 Workers' Compensation				273.00
Total Personnel Services – Employee Benefits				\$36,690.60
Total 2515 Financial Accounting Services				\$78,690.60

General Fund (10)

2519 Other Fiscal Services

Elementary

Secondary

Federal

Total

100 Personnel Services – Salaries

100 Personnel Services – Salaries

14,685.39

Total Personnel Services – Salaries

\$14,685.39

200 Personnel Services – Employee Benefits

220 Social Security Contributions

1,123.45

230 PSERS Retirement Contributions

4,385.03

250 Unemployment Compensation

196.95

260 Workers' Compensation

95.45

Total Personnel Services – Employee Benefits

\$5,800.88

Total 2519 Other Fiscal Services

\$20,486.27

General Fund (10)

2600 Operation and Maintenance of Plant Services

Elementary Secondary Federal Total

100	<u>Personnel Services – Salaries</u>			
100	Personnel Services – Salaries			555,282.38
Total Personnel Services – Salaries				\$555,282.38
200	<u>Personnel Services – Employee Benefits</u>			
210	Group Insurance – Contracted Provider			190,318.17
220	Social Security Contributions			40,387.20
230	PSERS Retirement Contributions			144,510.78
250	Unemployment Compensation			3,729.43
260	Workers' Compensation			3,608.91
Total Personnel Services – Employee Benefits				\$382,554.49
300	<u>Purchased Professional and Technical Services</u>			
310	Official / Administrative Services			2,000.00
340	Technical Services			16,888.67
Total Purchased Professional and Technical Services				\$18,888.67
400	<u>Purchased Property Services</u>			
410	Cleaning Services			22,204.00
420	Utility Services			40,363.38
430	Repairs and Maintenance Services			61,292.34
440	Rentals			10,037.63
Total Purchased Property Services				\$133,897.35
500	<u>Other Purchased Services</u>			
522	Automotive Liability Insurance			5,177.00
523	General Property and Liability Insurance			61,867.00
529	Other Insurance			8,225.00
530	Communications			15,068.33
580	Travel			997.00
Total Other Purchased Services				\$91,334.33
600	<u>Supplies</u>			
610	General Supplies	45,453.81	90,994.89	136,448.70
620	Energy			346,677.85
Total Supplies		\$45,453.81	\$90,994.89	\$483,126.55
700	<u>Property</u>			
752	Capital Equipment – Original and Additional			13,146.15
Total Property				\$13,146.15
800	<u>Other Objects</u>			
810	Dues and Fees			1,401.89
Total Other Objects				\$1,401.89
Total 2600 Operation and Maintenance of Plant Services		\$45,453.81	\$90,994.89	\$1,679,631.81

General Fund (10)

2610 Supervision of Operation and Maintenance of Plant Services

Elementary

Secondary

Federal

Total

100 Personnel Services – Salaries

100 Personnel Services – Salaries

62,117.35

Total Personnel Services – Salaries

\$62,117.35

200 Personnel Services – Employee Benefits

210 Group Insurance – Contracted Provider

20,671.84

220 Social Security Contributions

4,525.81

230 PSERS Retirement Contributions

18,279.24

250 Unemployment Compensation

194.99

260 Workers' Compensation

403.82

Total Personnel Services – Employee Benefits

\$44,075.70

Total 2610 Supervision of Operation and Maintenance of Plant Services

\$106,193.05

General Fund (10)

	<u>Elementary</u>	<u>Secondary</u>	<u>Federal</u>	<u>Total</u>
2611 Supervision of Operation and Maintenance of Plant Services – Head of Component				
100 Personnel Services – Salaries				
100 Personnel Services – Salaries				62,117.35
Total Personnel Services – Salaries				\$62,117.35
200 Personnel Services – Employee Benefits				
210 Group Insurance – Contracted Provider				20,671.84
220 Social Security Contributions				4,525.81
230 PSERS Retirement Contributions				18,279.24
250 Unemployment Compensation				194.99
260 Workers' Compensation				403.82
Total Personnel Services – Employee Benefits				\$44,075.70
Total 2611 Supervision of Operation and Maintenance of Plant Services – Head of Component				\$106,193.05

General Fund (10)

	<u>Elementary</u>	<u>Secondary</u>	<u>Federal</u>	<u>Total</u>
2620 Operation of Buildings Services				
100 Personnel Services – Salaries				
100 Personnel Services – Salaries				293,127.68
Total Personnel Services – Salaries				\$293,127.68
200 Personnel Services – Employee Benefits				
210 Group Insurance – Contracted Provider				111,821.55
220 Social Security Contributions				21,211.77
230 PSERS Retirement Contributions				85,873.70
250 Unemployment Compensation				2,474.28
260 Workers' Compensation				1,904.86
Total Personnel Services – Employee Benefits				\$223,286.16
300 Purchased Professional and Technical Services				
340 Technical Services				16,888.67
Total Purchased Professional and Technical Services				\$16,888.67
400 Purchased Property Services				
410 Cleaning Services				22,204.00
420 Utility Services				40,363.38
430 Repairs and Maintenance Services				61,292.34
440 Rentals				10,037.63
Total Purchased Property Services				\$133,897.35
500 Other Purchased Services				
522 Automotive Liability Insurance				5,177.00
523 General Property and Liability Insurance				61,867.00
529 Other Insurance				8,225.00
530 Communications				15,068.33
580 Travel				997.00
Total Other Purchased Services				\$91,334.33
600 Supplies				
610 General Supplies	44,515.44	89,118.15		133,633.59
620 Energy				346,677.85
Total Supplies	\$44,515.44	\$89,118.15		\$480,311.44
700 Property				
752 Capital Equipment – Original and Additional				13,146.15
Total Property				\$13,146.15
800 Other Objects				
810 Dues and Fees				1,401.89
Total Other Objects				\$1,401.89
Total 2620 Operation of Buildings Services	\$44,515.44	\$89,118.15		\$1,253,393.67

General Fund (10)

2630 Care and Upkeep of Grounds Services

Elementary

Secondary

Federal

Total

100 Personnel Services – Salaries

100 Personnel Services – Salaries

64,981.34

Total Personnel Services – Salaries

\$64,981.34

200 Personnel Services – Employee Benefits

210 Group Insurance – Contracted Provider

28,550.35

220 Social Security Contributions

4,658.99

230 PSERS Retirement Contributions

19,151.90

250 Unemployment Compensation

282.48

260 Workers' Compensation

422.33

Total Personnel Services – Employee Benefits

\$53,066.05

Total 2630 Care and Upkeep of Grounds Services

\$118,047.39

General Fund (10)

2640 Care and Upkeep of Equipment Services

Elementary

Secondary

Federal

Total

100 Personnel Services – Salaries

100 Personnel Services – Salaries

71,128.01

Total Personnel Services – Salaries

\$71,128.01

200 Personnel Services – Employee Benefits

210 Group Insurance – Contracted Provider

29,274.43

220 Social Security Contributions

5,100.13

230 PSERS Retirement Contributions

21,205.94

250 Unemployment Compensation

390.01

260 Workers' Compensation

462.37

Total Personnel Services – Employee Benefits

\$56,432.88

Total 2640 Care and Upkeep of Equipment Services

\$127,560.89

General Fund (10)

	<u>Elementary</u>	<u>Secondary</u>	<u>Federal</u>	<u>Total</u>
2660 Safety and Security Services				
100 Personnel Services – Salaries				
100 Personnel Services – Salaries				63,928.00
Total Personnel Services – Salaries				\$63,928.00
200 Personnel Services – Employee Benefits				
220 Social Security Contributions				4,890.50
250 Unemployment Compensation				387.67
260 Workers’ Compensation				415.53
Total Personnel Services – Employee Benefits				\$5,693.70
300 Purchased Professional and Technical Services				
310 Official / Administrative Services				2,000.00
Total Purchased Professional and Technical Services				\$2,000.00
600 Supplies				
610 General Supplies	938.37	1,876.74		2,815.11
Total Supplies	\$938.37	\$1,876.74		\$2,815.11
Total 2660 Safety and Security Services	\$938.37	\$1,876.74		\$74,436.81

General Fund (10)

2700 Student Transportation Services

Elementary Secondary Federal Total

100	<u>Personnel Services – Salaries</u>			
	100 Personnel Services – Salaries			220,008.68
Total Personnel Services – Salaries				\$220,008.68
200	<u>Personnel Services – Employee Benefits</u>			
	210 Group Insurance – Contracted Provider			20,997.39
	220 Social Security Contributions			16,592.52
	230 PSERS Retirement Contributions			54,406.05
	250 Unemployment Compensation			2,418.97
	260 Workers' Compensation			1,429.41
Total Personnel Services – Employee Benefits				\$95,844.34
300	<u>Purchased Professional and Technical Services</u>			
	310 Official / Administrative Services			1,305.00
Total Purchased Professional and Technical Services				\$1,305.00
400	<u>Purchased Property Services</u>			
	430 Repairs and Maintenance Services			33,460.13
Total Purchased Property Services				\$33,460.13
500	<u>Other Purchased Services</u>			
	515 Public Carriers			7,763.74
	522 Automotive Liability Insurance			13,000.00
	580 Travel			90.95
Total Other Purchased Services				\$20,854.69
600	<u>Supplies</u>			
	610 General Supplies			2,087.23
	620 Energy			36,349.74
Total Supplies				\$38,436.97
800	<u>Other Objects</u>			
	810 Dues and Fees			531.25
Total Other Objects				\$531.25
Total 2700 Student Transportation Services				\$410,441.06

General Fund (10)

2710 Supervision of Student Transportation Services

Elementary Secondary Federal Total

100	<u>Personnel Services – Salaries</u>			
	100 Personnel Services – Salaries			67,805.55
Total Personnel Services – Salaries				\$67,805.55
200	<u>Personnel Services – Employee Benefits</u>			
	210 Group Insurance – Contracted Provider			19,718.69
	220 Social Security Contributions			4,993.36
	230 PSERS Retirement Contributions			19,953.17
	250 Unemployment Compensation			195.00
	260 Workers' Compensation			440.72
Total Personnel Services – Employee Benefits				\$45,300.94
300	<u>Purchased Professional and Technical Services</u>			
	310 Official / Administrative Services			1,305.00
Total Purchased Professional and Technical Services				\$1,305.00
400	<u>Purchased Property Services</u>			
	430 Repairs and Maintenance Services			31,150.13
Total Purchased Property Services				\$31,150.13
500	<u>Other Purchased Services</u>			
	515 Public Carriers			7,763.74
	522 Automotive Liability Insurance			13,000.00
	580 Travel			90.95
Total Other Purchased Services				\$20,854.69
600	<u>Supplies</u>			
	610 General Supplies			2,087.23
	620 Energy			36,349.74
Total Supplies				\$38,436.97
800	<u>Other Objects</u>			
	810 Dues and Fees			531.25
Total Other Objects				\$531.25
Total 2710 Supervision of Student Transportation Services				\$205,384.53

General Fund (10)

2711 Supervision of Student Transportation Services – Head of Component

Elementary

Secondary

Federal

Total

100 Personnel Services – Salaries

100 Personnel Services – Salaries 67,805.55

Total Personnel Services – Salaries

\$67,805.55

200 Personnel Services – Employee Benefits

210 Group Insurance – Contracted Provider 19,718.69

220 Social Security Contributions 4,993.36

230 PSERS Retirement Contributions 19,953.17

250 Unemployment Compensation 195.00

260 Workers' Compensation 440.72

Total Personnel Services – Employee Benefits

\$45,300.94

300 Purchased Professional and Technical Services

310 Official / Administrative Services 1,305.00

Total Purchased Professional and Technical Services

\$1,305.00

400 Purchased Property Services

430 Repairs and Maintenance Services 31,150.13

Total Purchased Property Services

\$31,150.13

500 Other Purchased Services

515 Public Carriers 7,763.74

522 Automotive Liability Insurance 13,000.00

580 Travel 90.95

Total Other Purchased Services

\$20,854.69

600 Supplies

610 General Supplies 2,087.23

620 Energy 36,349.74

Total Supplies

\$38,436.97

800 Other Objects

810 Dues and Fees 531.25

Total Other Objects

\$531.25

Total 2711 Supervision of Student Transportation Services – Head of Component

\$205,384.53

General Fund (10)

2720 Vehicle Operation Services

Elementary

Secondary

Federal

Total

100 Personnel Services – Salaries

100 Personnel Services – Salaries

152,203.13

Total Personnel Services – Salaries

\$152,203.13

200 Personnel Services – Employee Benefits

210 Group Insurance – Contracted Provider

1,278.70

220 Social Security Contributions

11,599.16

230 PSERS Retirement Contributions

34,452.88

250 Unemployment Compensation

2,223.97

260 Workers' Compensation

988.69

Total Personnel Services – Employee Benefits

\$50,543.40

Total 2720 Vehicle Operation Services

\$202,746.53

General Fund (10)

2750 Nonpublic Transportation

Elementary

Secondary

Federal

Total

400 Purchased Property Services

430 Repairs and Maintenance Services

2,310.00

Total Purchased Property Services

\$2,310.00

Total 2750 Nonpublic Transportation

\$2,310.00

General Fund (10)

2800 Support Services – Central

Elementary

Secondary

Federal

Total

100 Personnel Services – Salaries

100 Personnel Services – Salaries

115,363.76

Total Personnel Services – Salaries

\$115,363.76

200 Personnel Services – Employee Benefits

210 Group Insurance – Contracted Provider

29,172.96

220 Social Security Contributions

8,200.81

230 PSERS Retirement Contributions

33,579.36

250 Unemployment Compensation

273.92

260 Workers' Compensation

737.79

Total Personnel Services – Employee Benefits

\$71,964.84

Total 2800 Support Services – Central

\$187,328.60

General Fund (10)

2820 Information Services

Elementary

Secondary

Federal

Total

100 Personnel Services – Salaries

100 Personnel Services – Salaries

115,363.76

Total Personnel Services – Salaries

\$115,363.76

200 Personnel Services – Employee Benefits

210 Group Insurance – Contracted Provider

29,172.96

220 Social Security Contributions

8,200.81

230 PSERS Retirement Contributions

33,579.36

250 Unemployment Compensation

273.92

260 Workers' Compensation

737.79

Total Personnel Services – Employee Benefits

\$71,964.84

Total 2820 Information Services

\$187,328.60

General Fund (10)

2821 Supervision of Information Services

Elementary

Secondary

Federal

Total

100 Personnel Services – Salaries

100 Personnel Services – Salaries

115,363.76

Total Personnel Services – Salaries

\$115,363.76

200 Personnel Services – Employee Benefits

210 Group Insurance – Contracted Provider

29,172.96

220 Social Security Contributions

8,200.81

230 PSERS Retirement Contributions

33,579.36

250 Unemployment Compensation

273.92

260 Workers' Compensation

737.79

Total Personnel Services – Employee Benefits

\$71,964.84

Total 2821 Supervision of Information Services

\$187,328.60

General Fund (10)

2900 Other Support Services

Elementary

Secondary

Federal

Total

600 Supplies

610 General Supplies

1,739.20

Total Supplies

\$1,739.20

Total 2900 Other Support Services

\$1,739.20

General Fund (10)

2910 Support Services Not Listed Elsewhere In the 2000 Series

Elementary

Secondary

Federal

Total

600 Supplies

610 General Supplies

1,739.20

Total Supplies

\$1,739.20

Total 2910 Support Services Not Listed Elsewhere In the 2000 Series

\$1,739.20

General Fund (10)

3000 Operation of Non-Instructional Services

Total

100 Personnel Services – Salaries

100 Personnel Services – Salaries 266,734.56

Total Personnel Services – Salaries \$266,734.56

200 Personnel Services – Employee Benefits

220 Social Security Contributions 20,222.47

230 PSERS Retirement Contributions 75,093.66

250 Unemployment Compensation 3,823.37

260 Workers’ Compensation 1,734.10

Total Personnel Services – Employee Benefits \$100,873.60

300 Purchased Professional and Technical Services

310 Official / Administrative Services 95,690.19

340 Technical Services 27,622.00

Total Purchased Professional and Technical Services \$123,312.19

400 Purchased Property Services

430 Repairs and Maintenance Services 3,027.25

440 Rentals 1,260.00

Total Purchased Property Services \$4,287.25

500 Other Purchased Services

510 Student Transportation Services 1,177.00

520 Insurance – General 28,300.00

530 Communications 4,492.79

550 Printing and Binding 5,579.00

580 Travel 12,442.15

Total Other Purchased Services \$51,990.94

600 Supplies

610 General Supplies 71,997.23

Total Supplies \$71,997.23

700 Property

752 Capital Equipment – Original and Additional 1,823.00

Total Property \$1,823.00

800 Other Objects

810 Dues and Fees 15,898.00

Total Other Objects \$15,898.00

Total 3000 Operation of Non-Instructional Services \$636,916.77

General Fund (10)

3200 Student Activities

Elementary Secondary Federal Total

100	<u>Personnel Services – Salaries</u>				
	100 Personnel Services – Salaries				226,673.26
Total Personnel Services – Salaries					\$226,673.26
200	<u>Personnel Services – Employee Benefits</u>				
	220 Social Security Contributions				17,157.83
	230 PSERS Retirement Contributions				66,719.17
	250 Unemployment Compensation				3,111.14
	260 Workers' Compensation				1,473.50
Total Personnel Services – Employee Benefits					\$88,461.64
300	<u>Purchased Professional and Technical Services</u>				
	310 Official / Administrative Services				76,535.09
	340 Technical Services				27,622.00
Total Purchased Professional and Technical Services					\$104,157.09
400	<u>Purchased Property Services</u>				
	430 Repairs and Maintenance Services				3,027.25
	440 Rentals				1,260.00
Total Purchased Property Services					\$4,287.25
500	<u>Other Purchased Services</u>				
	510 Student Transportation Services				1,177.00
	520 Insurance – General				28,300.00
	580 Travel				12,442.15
Total Other Purchased Services					\$41,919.15
600	<u>Supplies</u>				
	610 General Supplies				71,997.23
Total Supplies					\$71,997.23
700	<u>Property</u>				
	752 Capital Equipment – Original and Additional				1,823.00
Total Property					\$1,823.00
800	<u>Other Objects</u>				
	810 Dues and Fees				15,898.00
Total Other Objects					\$15,898.00
Total 3200 Student Activities					\$555,216.62

General Fund (10)

3300 Community Services

Elementary

Secondary

Federal

Total

100 Personnel Services – Salaries

100 Personnel Services – Salaries

40,061.30

Total Personnel Services – Salaries

\$40,061.30

200 Personnel Services – Employee Benefits

220 Social Security Contributions

3,064.64

230 PSERS Retirement Contributions

8,374.49

250 Unemployment Compensation

712.23

260 Workers' Compensation

260.60

Total Personnel Services – Employee Benefits

\$12,411.96

300 Purchased Professional and Technical Services

310 Official / Administrative Services

19,155.10

Total Purchased Professional and Technical Services

\$19,155.10

500 Other Purchased Services

530 Communications

4,492.79

550 Printing and Binding

5,579.00

Total Other Purchased Services

\$10,071.79

Total 3300 Community Services

\$81,700.15

General Fund (10)

5000 Other Expenditures and Financing Uses

Total

800 Other Objects

830 Interest 6,081.00

Total Other Objects \$6,081.00

900 Other Uses of Funds

910 Redemption of Principal 240,624.14

930 Fund Transfers 2,215,937.50

932 Capital Reserve Fund Transfers Applicable To Fund 32 150,000.00

Total Other Uses of Funds \$2,606,561.64

Total 5000 Other Expenditures and Financing Uses \$2,612,642.64

General Fund (10)

	<u>Elementary</u>	<u>Secondary</u>	<u>Federal</u>	<u>Total</u>
5100 Debt Service / Other Expenditures and Financing Uses				
800 Other Objects				
830 Interest				6,081.00
Total Other Objects				\$6,081.00
900 Other Uses of Funds				
910 Redemption of Principal				240,624.14
Total Other Uses of Funds				\$240,624.14
Total 5100 Debt Service / Other Expenditures and Financing Uses				\$246,705.14

General Fund (10)

	<u>Elementary</u>	<u>Secondary</u>	<u>Federal</u>	<u>Total</u>
5110 Debt Service				
800 Other Objects				
830 Interest				6,081.00
Total Other Objects				\$6,081.00
900 Other Uses of Funds				
910 Redemption of Principal				240,624.14
Total Other Uses of Funds				\$240,624.14
Total 5110 Debt Service				\$246,705.14

LEA : 117414203 Loyalsock Township SD

Printed 10/26/2017 1:39:16 PM

General Fund (10)

	<u>Elementary</u>	<u>Secondary</u>	<u>Federal</u>	<u>Total</u>
5200 Interfund Transfers – Out				
900 Other Uses of Funds				
930 Fund Transfers				2,215,937.50
932 Capital Reserve Fund Transfers Applicable To Fund 32				150,000.00
Total Other Uses of Funds				\$2,365,937.50
Total 5200 Interfund Transfers – Out				\$2,365,937.50

General Fund (10)

5230 Capital Projects Fund Transfers

Elementary

Secondary

Federal

Total

900 Other Uses of Funds

932 Capital Reserve Fund Transfers Applicable To Fund 32

150,000.00

Total Other Uses of Funds

\$150,000.00

Total 5230 Capital Projects Fund Transfers

\$150,000.00

General Fund (10)

5240 Debt Service Fund Transfers

Elementary

Secondary

Federal

Total

900 Other Uses of Funds

930 Fund Transfers

2,215,937.50

Total Other Uses of Funds

\$2,215,937.50

Total 5240 Debt Service Fund Transfers

\$2,215,937.50

Capital Reserve Fund - § 1431 (32)

2000 Support Services

700 Property

752 Capital Equipment – Original and Additional

174,054.20

756 Capitalized Technology Hardware and Equipment – Original

31,496.00

Total Property **\$205,550.20**

Total 2000 Support Services **\$205,550.20**

Capital Reserve Fund - § 1431 (32)

2200 Support Services – Instructional Staff

700 Property

756 Capitalized Technology Hardware and Equipment – Original

	<u>Elementary</u>	<u>Secondary</u>	<u>Federal</u>	<u>Total</u>
756 Capitalized Technology Hardware and Equipment – Original	9,986.33	19,972.67		29,959.00
Total Property	\$9,986.33	\$19,972.67		\$29,959.00
Total 2200 Support Services – Instructional Staff	\$9,986.33	\$19,972.67		\$29,959.00

Capital Reserve Fund - § 1431 (32)

2240 Computer-Assisted Instruction Support Services

700 Property

756 Capitalized Technology Hardware and Equipment – Original

	<u>Elementary</u>	<u>Secondary</u>	<u>Federal</u>	<u>Total</u>
756 Capitalized Technology Hardware and Equipment – Original	9,986.33	19,972.67		29,959.00
Total Property	\$9,986.33	\$19,972.67		\$29,959.00
Total 2240 Computer-Assisted Instruction Support Services	\$9,986.33	\$19,972.67		\$29,959.00

Capital Reserve Fund - § 1431 (32)

2300 Support Services – Administration

Elementary

Secondary

Federal

Total

700 Property

752 Capital Equipment – Original and Additional

3,316.56

3,316.56

Total Property

\$3,316.56

\$3,316.56

Total 2300 Support Services – Administration

\$3,316.56

\$3,316.56

Capital Reserve Fund - § 1431 (32)

2380 Office of the Principal Services

700 Property

752 Capital Equipment – Original and Additional

Total Property

Total 2380 Office of the Principal Services

Elementary

Secondary

Federal

Total

3,316.56

3,316.56

\$3,316.56

\$3,316.56

\$3,316.56

\$3,316.56

Capital Reserve Fund - § 1431 (32)

2600 Operation and Maintenance of Plant Services

Elementary

Secondary

Federal

Total

700 Property

752 Capital Equipment – Original and Additional

32,755.64

Total Property

\$32,755.64

Total 2600 Operation and Maintenance of Plant Services

\$32,755.64

LEA : 117414203 Loyalsock Township SD

Printed 10/26/2017 1:39:11 PM

Capital Reserve Fund - § 1431 (32)

2620 Operation of Buildings Services

Elementary

Secondary

Federal

Total

700 Property

752 Capital Equipment – Original and Additional

32,755.64

Total Property

\$32,755.64

Total 2620 Operation of Buildings Services

\$32,755.64

LEA : 117414203 Loyalsock Township SD

Printed 10/26/2017 1:39:11 PM

Capital Reserve Fund - § 1431 (32)

2700 Student Transportation Services

Elementary

Secondary

Federal

Total

700 Property

752 Capital Equipment – Original and Additional

137,982.00

756 Capitalized Technology Hardware and Equipment – Original

1,537.00

Total Property

\$139,519.00

Total 2700 Student Transportation Services

\$139,519.00

LEA : 117414203 Loyalsock Township SD

Printed 10/26/2017 1:39:11 PM

Capital Reserve Fund - § 1431 (32)

2720 Vehicle Operation Services

Elementary

Secondary

Federal

Total

700 Property

752 Capital Equipment – Original and Additional

137,982.00

756 Capitalized Technology Hardware and Equipment – Original

1,537.00

Total Property

\$139,519.00

Total 2720 Vehicle Operation Services

\$139,519.00

Capital Reserve Fund - § 1431 (32)

4000 Facilities Acquisition, Construction and Improvement Services

Total

700 Property

710 Land and Improvements

11,644.50

780 Infrastructure Assets

11,600.00

Total Property

\$23,244.50

Total 4000 Facilities Acquisition, Construction and Improvement Services

\$23,244.50

LEA : 117414203 Loyalsock Township SD

Printed 10/26/2017 1:39:15 PM

Capital Reserve Fund - § 1431 (32)

4200 Existing Site Improvement Services

Elementary

Secondary

Federal

Total

700 Property

710 Land and Improvements

11,644.50

780 Infrastructure Assets

11,600.00

Total Property

\$23,244.50

Total 4200 Existing Site Improvement Services

\$23,244.50

Other Capital Projects Fund (39)

2000 Support Services

800 Other Objects

810 Dues and Fees

Total

229.13

Total Other Objects

\$229.13

Total 2000 Support Services

\$229.13

Other Capital Projects Fund (39)

2500 Support Services – Business

Elementary

Secondary

Federal

Total

800 Other Objects

810 Dues and Fees

229.13

Total Other Objects

\$229.13

Total 2500 Support Services – Business

\$229.13

Other Capital Projects Fund (39)

2510 Fiscal Services

Elementary

Secondary

Federal

Total

800 Other Objects

810 Dues and Fees

229.13

Total Other Objects

\$229.13

Total 2510 Fiscal Services

\$229.13

Other Capital Projects Fund (39)

2511 Supervision of Fiscal Services - Head of Component

Elementary

Secondary

Federal

Total

800 Other Objects

810 Dues and Fees

229.13

Total Other Objects

\$229.13

Total 2511 Supervision of Fiscal Services - Head of Component

\$229.13

Other Capital Projects Fund (39)

4000 Facilities Acquisition, Construction and Improvement Services

Total

700 Property

720 Buildings

846,523.46

Total Property

\$846,523.46

Total 4000 Facilities Acquisition, Construction and Improvement Services

\$846,523.46

Other Capital Projects Fund (39)

4500 Building Acquisition and Construction Services – Original and Additional

Elementary

Secondary

Federal

Total

700 Property

720 Buildings

846,523.46

Total Property

\$846,523.46

Total 4500 Building Acquisition and Construction Services – Original and Additional

\$846,523.46

Debt Service Fund (40)

5000 Other Expenditures and Financing Uses

Total

800 Other Objects

830 Interest 500,937.50

Total Other Objects \$500,937.50

900 Other Uses of Funds

910 Redemption of Principal 1,715,000.00

Total Other Uses of Funds \$1,715,000.00

Total 5000 Other Expenditures and Financing Uses \$2,215,937.50

Debt Service Fund (40)

5100 Debt Service / Other Expenditures and Financing Uses	<u>Elementary</u>	<u>Secondary</u>	<u>Federal</u>	<u>Total</u>
800 <u>Other Objects</u>				
830 Interest				500,937.50
Total Other Objects				\$500,937.50
900 <u>Other Uses of Funds</u>				
910 Redemption of Principal				1,715,000.00
Total Other Uses of Funds				\$1,715,000.00
Total 5100 Debt Service / Other Expenditures and Financing Uses				\$2,215,937.50

Debt Service Fund (40)

	<u>Elementary</u>	<u>Secondary</u>	<u>Federal</u>	<u>Total</u>
5110 Debt Service				
800 Other Objects				
830 Interest				500,937.50
Total Other Objects				\$500,937.50
900 Other Uses of Funds				
910 Redemption of Principal				1,715,000.00
Total Other Uses of Funds				\$1,715,000.00
Total 5110 Debt Service				\$2,215,937.50

	<u>General Fund(10)</u>	<u>Public Purpose Trust(27)</u>	<u>Other Compt Approved (28)</u>	<u>Athletic / Activity(29)</u>	<u>Capital Reserve (690, 1850)(31)</u>
1000 Instruction					
1100 Regular Programs - Elementary / Secondary	9,288,226.24				
1200 Special Programs - Elementary / Secondary	2,659,522.57				
1300 Vocational Education	613,165.10				
1400 Other Instructional Programs - Elementary / Secondary	212,331.99				
1700 Higher Education Programs for Secondary Students	1,000.00				
Total Instruction	\$12,774,245.90				
2000 Support Services					
2100 Support Services - Students	908,322.16				
2200 Support Services - Instructional Staff	539,687.76				
2300 Support Services - Administration	1,855,509.78				
2400 Support Services - Pupil Health	239,936.49				
2500 Support Services - Business	377,054.00				
2600 Operation and Maintenance of Plant Services	1,679,631.81				
2700 Student Transportation Services	410,441.06				
2800 Support Services - Central	187,328.60				
2900 Other Support Services	1,739.20				
Total Support Services	\$6,199,650.86				
3000 Operation of Non-Instructional Services					
3200 Student Activities	555,216.62				
3300 Community Services	81,700.15				
Total Operation of Non-Instructional Services	\$636,916.77				
4000 Facilities Acquisition, Construction and Improvement Services					
4200 Existing Site Improvement Services					
4500 Building Acquisition and Construction Services - Original and Additional					
Total Facilities Acquisition, Construction and Improvement Services					
5000 Other Expenditures and Financing Uses					
5100 Debt Service / Other Expenditures and Financing Uses	246,705.14				
5200 Interfund Transfers - Out	2,365,937.50				
Total Other Expenditures and Financing Uses	\$2,612,642.64				
TOTAL ACTUAL EXPENDITURES & OTHER FINANCING USES	\$22,223,456.17				

	<u>Capital Reserve (1431)(32)</u>	<u>Other Capital Projects Fund(39)</u>	<u>Debt Service(40)</u>	<u>Permanent(90)</u>	<u>Total</u>
1000 Instruction					
1100 Regular Programs - Elementary / Secondary					9,288,226.24
1200 Special Programs - Elementary / Secondary					2,659,522.57
1300 Vocational Education					613,165.10
1400 Other Instructional Programs - Elementary / Secondary					212,331.99
1700 Higher Education Programs for Secondary Students					1,000.00
Total Instruction					\$12,774,245.90
2000 Support Services					
2100 Support Services - Students					908,322.16
2200 Support Services - Instructional Staff	29,959.00				569,646.76
2300 Support Services - Administration	3,316.56				1,858,826.34
2400 Support Services - Pupil Health					239,936.49
2500 Support Services - Business		229.13			377,283.13
2600 Operation and Maintenance of Plant Services	32,755.64				1,712,387.45
2700 Student Transportation Services	139,519.00				549,960.06
2800 Support Services - Central					187,328.60
2900 Other Support Services					1,739.20
Total Support Services	\$205,550.20	\$229.13			\$6,405,430.19
3000 Operation of Non-Instructional Services					
3200 Student Activities					555,216.62
3300 Community Services					81,700.15
Total Operation of Non-Instructional Services					\$636,916.77
4000 Facilities Acquisition, Construction and Improvement Services					
4200 Existing Site Improvement Services	23,244.50				23,244.50
4500 Building Acquisition and Construction Services - Original and Additional		846,523.46			846,523.46
Total Facilities Acquisition, Construction and Improvement Services	\$23,244.50	\$846,523.46			\$869,767.96
5000 Other Expenditures and Financing Uses					
5100 Debt Service / Other Expenditures and Financing Uses			2,215,937.50		2,462,642.64
5200 Interfund Transfers - Out					2,365,937.50
Total Other Expenditures and Financing Uses			\$2,215,937.50		\$4,828,580.14
TOTAL ACTUAL EXPENDITURES & OTHER FINANCING USES	\$228,794.70	\$846,752.59	\$2,215,937.50		\$25,514,940.96

LEA : 117414203 Loyalsock Township SD

Printed 10/26/2017 1:39:38 PM

PSERS Salary Data (Salary Data should relate to the General Fund only)

Amount Description	Amount
Total Salary Base for salaries subject to PSERS withholding	9,349,336.47
Total Federally Funded salaries subject to PSERS withholding	249,116.41
	<hr/>

Title I Expenditure Data

Amount Description	Amount
Expenditures Funded with Current Title I Funds	319,230.00
Expenditures Funded with Carry over Title I Funds	27,624.00
	<hr/>
Total Title I Expenditure Data	\$346,854.00
	<hr/>

Title I ARRA Amount

Amount Description	Amount
Portion of Total Title I Expenditures funded with ARRA Title I	<hr/>

Benefits for Staff Relative to Collective Bargaining Agreements

	OBJECT	COVERED	NOT COVERED	TOTAL
10 General Fund				
	211 Medical Insurance	1,511,959.13	344,315.28	1,856,274.41
	212 Dental Insurance	41,374.20	7,308.00	48,682.20
	215 Eye Care Insurance			
	216 Prescription Insurance			
	271 Self-Insurance Medical Benefits		56,633.86	56,633.86
	272 Self-Insurance Dental Benefits		1,392.00	1,392.00
	275 Self-Insurance Eye Care Benefits			
	276 Self-Insurance Prescription Benefits			
	FUND TOTAL		\$1,553,333.33	\$409,649.14
50 Enterprise Fund	No Self Insurance data to report			
	211 Medical Insurance			
	212 Dental Insurance			
	215 Eye Care Insurance			
	216 Prescription Insurance			
	271 Self-Insurance Medical Benefits			
	272 Self-Insurance Dental Benefits			
	275 Self-Insurance Eye Care Benefits			
	276 Self-Insurance Prescription Benefits			
	FUND TOTAL			
60 Internal Service Fund	No Self Insurance data to report			
	211 Medical Insurance			
	212 Dental Insurance			
	215 Eye Care Insurance			
	216 Prescription Insurance			
	271 Self-Insurance Medical Benefits			
	272 Self-Insurance Dental Benefits			
	275 Self-Insurance Eye Care Benefits			
	276 Self-Insurance Prescription Benefits			
	FUND TOTAL			
Total of All Funds		\$1,553,333.33	\$409,649.14	\$1,962,982.47

LEA : 117414203 Loyalsock Township SD

Printed 10/26/2017 1:39:40 PM

Function	Special Education (Prior Year)	Nonspecial Education (Prior Year)	Total (Prior Year)	Special Education (Current Year)	Nonspecial Education (Current Year)	Total (Current Year)
2120 Guidance Services	330,799.44	330,799.43	661,598.87	285,533.67	285,533.67	571,067.34
2140 Psychological Services	54,743.61	54,743.61	109,487.22	62,995.10	62,995.10	125,990.20
2150 Speech Pathology and Audiology Services						
2160 Social Work Services						
2260 Instruction and Curriculum Development Services	14,654.86	83,044.22	97,699.08	15,446.94	87,532.65	102,979.59
2350 Legal and Accounting Services	1,135.37	21,572.04	22,707.41	898.81	17,077.48	17,976.29
2420 Medical Services						
2440 Nursing Services	34,022.31	192,793.07	226,815.38	35,990.47	203,946.02	239,936.49
2700 Student Transportation Services	60,374.70	342,113.78	402,488.48	61,566.16	348,874.90	410,441.06
Total	\$495,730.29	\$1,025,066.15	\$1,520,796.44	\$462,431.15	\$1,005,959.82	\$1,468,390.97

(PRINCIPAL AMOUNTS ONLY)

GOVERNMENTAL FUNDS/ ACTIVITIES

	Short-Term Borrowing	General Obligation Bonds/Notes	Authority Building Obligations	Other Long-Term Debt	Other Post-Employment Benefits (OPEB)	Compensated Absences	Net Pension Liability	Total
1. Debt at Beginning of Fiscal Year		21,825,000.00		162,192.00	826,727.00	50,150.90	30,145,608.00	53,009,677.90
2. Additional Debt Incurred During Year				494,299.00	126,994.00	12,663.95	4,728,779.00	5,362,735.95
3. Retirements and Repayments		1,715,000.00		237,504.00	74,677.00	4,259.51		2,031,440.51
4. Debt at End of Fiscal Year		20,110,000.00		418,987.00	879,044.00	58,555.34	34,874,387.00	56,340,973.34
5. Accreted Interest at End Of Fiscal Year								
6. Total Debt and Accreted Interest		20,110,000.00		418,987.00	879,044.00	58,555.34	34,874,387.00	56,340,973.34
7. Current Portion P&I - Due within 1 year		2,243,937.50		245,567.00				2,489,504.50
8. Interest Paid during current fiscal year		500,937.50		6,081.00				507,018.50

(PRINCIPAL AMOUNTS ONLY)

PROPRIETARY FUNDS

	Short-Term Borrowing	General Obligation Bonds/Notes	Authority Building Obligations	Other Long-Term Debt	Other Post-Employment Benefits (OPEB)	Compensated Absences	Net Pension Liability	Total
1. Debt at Beginning of Fiscal Year				3,026.00			868,392.00	871,418.00
2. Additional Debt Incurred During Year							136,221.00	136,221.00
3. Retirements and Repayments				521.00				521.00
4. Debt at End of Fiscal Year				2,505.00			1,004,613.00	1,007,118.00
5. Accreted Interest at End Of Fiscal Year								
6. Total Debt and Accreted Interest				2,505.00			1,004,613.00	1,007,118.00
7. Current Portion P&I - Due within 1 year				808.00				808.00
8. Interest Paid during current fiscal year				287.00				287.00

Total Principal and Interest Payments Made by Your School - All Funds

Function	Fund		Principal (910)	Principal (920)	Interest (830)	Total (Principal +Interest)	Misc Other Uses (990)
5110	10	General Fund	240,624.14		6,081.00	246,705.14	
5110	20	Special Revenue Funds					
5110	30	Capital Projects Funds					
5110	40	Debt Service Fund	1,715,000.00		500,937.50	2,215,937.50	
5110	90	Permanent Fund					
5120	10	General Fund					
5120	20	Special Revenue Funds					
5120	30	Capital Projects Funds					
5120	40	Debt Service Fund					

Total Debt Payments - Governmental Funds			\$1,955,624.14		\$507,018.50	\$2,462,642.64	
---	--	--	-----------------------	--	---------------------	-----------------------	--

Function	Fund		Principal (910)	Principal (920)	Interest (830)	Total (Principal +Interest)
5110	50	Enterprise Fund				
5110	60	Internal Service Fund				
5120	50	Enterprise Fund				
5120	60	Internal Service Fund				

Total Debt Payments - Proprietary Funds						
--	--	--	--	--	--	--

Debt Details
Governmental Funds/ Activities

Debt Category	Debt Issue Date (MM/YYYY)	Principal Amounts Only				Current Portion Due Within One Year (Principal and Interest)	Interest Paid During Fiscal Year
		Debt at Beginning of Fiscal Year	Additions	Reductions / Repayments	Debt at End of Fiscal Year		
General Obligation Bonds/Notes – CIB	11/2015	2,995,000.00		870,000.00	2,125,000.00	92,000.00	51,200.00
General Obligation Bonds/Notes – CIB	11/2014	5,190,000.00		5,000.00	5,185,000.00	130,317.50	125,417.50
General Obligation Bonds/Notes – CIB	08/2012	4,625,000.00		20,000.00	4,605,000.00	963,300.00	92,300.00
General Obligation Bonds/Notes – CIB	07/2012	7,345,000.00		5,000.00	7,340,000.00	181,945.00	177,045.00
General Obligation Bonds/Notes – CIB	08/2011	1,670,000.00		815,000.00	855,000.00	876,375.00	54,975.00
Other Long Term Debt/Liabilities		162,192.00	494,299.00	237,504.00	418,987.00	245,567.00	6,081.00
Compensated Absences		50,150.90	12,663.95	4,259.51	58,555.34		
Other Post-Employment Benefits (OPEB)		826,727.00	126,994.00	74,677.00	879,044.00		
Net Pension Liability		30,145,608.00	4,728,779.00		34,874,387.00		
Totals for Debt Entered:		\$53,009,677.90	\$5,362,735.95	\$2,031,440.51	\$56,340,973.34	\$2,489,504.50	\$507,018.50

Bond Details
Proprietary Funds

Debt Category	Debt Issue Date (MM/YYYY)	Principal Amounts Only				Current Portion Due Within One Year (Principal and Interest)	Interest Paid During Fiscal Year
		Debt at Beginning of Fiscal Year	Additions	Reductions / Repayments	Debt at End of Fiscal Year		
Other Long Term Debt/Liabilities		3,026.00		521.00	2,505.00	808.00	287.00
Net Pension Liability		868,392.00	136,221.00		1,004,613.00		
Totals for Debt Entered:		\$871,418.00	\$136,221.00	\$521.00	\$1,007,118.00	\$808.00	\$287.00

General Fund (10)

Section 1: Tuition/Purchased Services as Reported within Expenditure Detail

	Amount
Tuition Reported in General Fund Expenditures 1000-560	662,258.49
Purchased Services in General Fund Expenditures 1000-594 and 1000-597	

Section 1 Total	\$662,258.49
------------------------	---------------------

Section 2: Tuition Paid to Institution Types During Fiscal Year

	Tuition Paid For Nonspecial Education	Tuition Paid For Special Education	Total
1 1306 Institutions			
2 Institutionalized Children's Programs			
3 Juveniles Incarcerated in Adult Facilities			
4 Residential Treatment Facilities	58,757.49		58,757.49
5 Other Local Education Agencies	5,347.80		5,347.80
6 Brick and Mortar Charter Schools			
7 Cyber Charter Schools	216,688.84	100,159.98	316,848.82
8 Career and Technology Centers	241,486.39		241,486.39
9 Approved Private Schools			
10 PA Chartered Schools for the Deaf and Blind			
11 Private Residential Rehabilitative Institutions	36,267.99		36,267.99
12 Juvenile Detention Centers			
13 Special Program Jointures			
14 Other Tuition Not Included Elsewhere In This Section	3,550.00		3,550.00

Section 2 Total	\$562,098.51	\$100,159.98	\$662,258.49
------------------------	---------------------	---------------------	---------------------

1 .	<u>Student Transportation Services for Educational Field Trips</u>	9,678.59
2 .	<u>Student Transportation Services for Student Activities</u>	12,406.65
3 .	<u>Rental of Vehicles for Student Transportation Services</u>	
4 .	<u>Capital Reserve Funds</u>	

Include only district-owned transportation expenditures paid from State or local money.
 DO NOT include federal expenditures or payments to contract service providers.
 Contracted transportation services should not be recorded on this schedule.

Food Service / Cafeteria Operations Fund (51)

3000 Operation of Non-Instructional Services

Total

100 Personnel Services – Salaries

100 Personnel Services – Salaries 285,217.00

Total Personnel Services – Salaries \$285,217.00

200 Personnel Services – Employee Benefits

210 Group Insurance – Contracted Provider 58,720.87

220 Social Security Contributions 21,167.03

230 PSERS Retirement Contributions 109,653.87

250 Unemployment Compensation 3,397.39

260 Workers' Compensation 1,853.77

Total Personnel Services – Employee Benefits \$194,792.93

400 Purchased Property Services

430 Repairs and Maintenance Services 821.05

Total Purchased Property Services \$821.05

500 Other Purchased Services

580 Travel 1,863.00

Total Other Purchased Services \$1,863.00

600 Supplies

610 General Supplies 39,974.00

630 Food 449,166.00

Total Supplies \$489,140.00

700 Property

740 Depreciation 49,640.73

Total Property \$49,640.73

800 Other Objects

810 Dues and Fees 729.00

830 Interest 286.61

Total Other Objects \$1,015.61

Total 3000 Operation of Non-Instructional Services \$1,022,490.32

Food Service / Cafeteria Operations Fund (51)

3100 Food Services

Elementary Secondary Federal Total

100 Personnel Services – Salaries

100 Personnel Services – Salaries 285,217.00

Total Personnel Services – Salaries \$285,217.00

200 Personnel Services – Employee Benefits

210 Group Insurance – Contracted Provider 58,720.87

220 Social Security Contributions 21,167.03

230 PSERS Retirement Contributions 109,653.87

250 Unemployment Compensation 3,397.39

260 Workers' Compensation 1,853.77

Total Personnel Services – Employee Benefits \$194,792.93

400 Purchased Property Services

430 Repairs and Maintenance Services 821.05

Total Purchased Property Services \$821.05

500 Other Purchased Services

580 Travel 1,863.00

Total Other Purchased Services \$1,863.00

600 Supplies

610 General Supplies 39,974.00

630 Food 449,166.00

Total Supplies \$489,140.00

700 Property

740 Depreciation 49,640.73

Total Property \$49,640.73

800 Other Objects

810 Dues and Fees 729.00

830 Interest 286.61

Total Other Objects \$1,015.61

Total 3100 Food Services \$1,022,490.32

	<u>Food Service(51)</u>	<u>Child Care Operations(52)</u>	<u>Other Enterprise(58)</u>	<u>Internal Service(60)</u>	<u>Total</u>
3000 <u>Operation of Non-Instructional Services</u>					
3100 Food Services	1,022,490.32				1,022,490.32
Total Operation of Non-Instructional Services	\$1,022,490.32				\$1,022,490.32
TOTAL ACTUAL EXPENDITURES & OTHER FINANCING USES	\$1,022,490.32				\$1,022,490.32