

LEA Name : Loyalsock Township SD
Address : 1605 Four Mile Drive
Williamsport, PA 17701

County : Lycoming
AUN Number : 117414203
LEA Type : SD

**Annual Financial Report
Accuracy Certification Statement**

For Fiscal Year Ending

6/30/2019

Pennsylvania Department of Education

&

Office of Comptroller Operations

PDE-2056: Intermediate Unit

PDE-2057: School District, AVTS/CTC, Charter School,
and Special Program Jointure

CERTIFICATION: By signing this page I agree that the electronic data submitted is a complete and accurate statement of the financial operations and status of the local education agency for the fiscal year. It has been prepared in accordance with generally accepted accounting principles and established Commonwealth of PA reporting guidelines.

Gerald L. McLaughlin

Chief School Administrator Signature

M. David Egley

Board Secretary Signature

1/3/20

Date

1/3/20

Date

Maurice D Egly

Contact Person

degly@ltsd.k12.pa.us

Contact Person E-mail Address

(570)326-6508

Contact Person Telephone Number

(570)326-0770

Contact Person Fax Number

Ext :1004

Audit Certification

Annual Financial Report:

For Fiscal Year Ending 6/30/2019

(Pursuant to PA School Code Section 218(b))

LEA Name : Loyalsock Township SD

AUN Number : 117414203

County : Lycoming

Audit Certification Due:
12/31/2019

This certification is applicable to the Annual Financial Report data submitted through the Consolidated Financial Reporting System on: 10/31/19

Date

Auditing Firm:

Larson, Kellett & Associates, P.C.

CERTIFICATION: By signing this page I agree that the financial statements of the school have been properly audited as noted above pursuant to Article XXIV, and in the auditor's professional opinion, the Annual Financial Report (PDE-2057) submitted on the date referenced is materially consistent with the audited financial statements.

Page 2

Chief School Administrator

Maurice D Egly

Signature

10/31/19

Date

Board Secretary

M. David Egly

Signature

10/31/19

Date

Maurice D Egly

Contact Person

degly@ltsd.k12.pa.us

Contact Person E-mail Address

(570)326-6508 Ext :1004

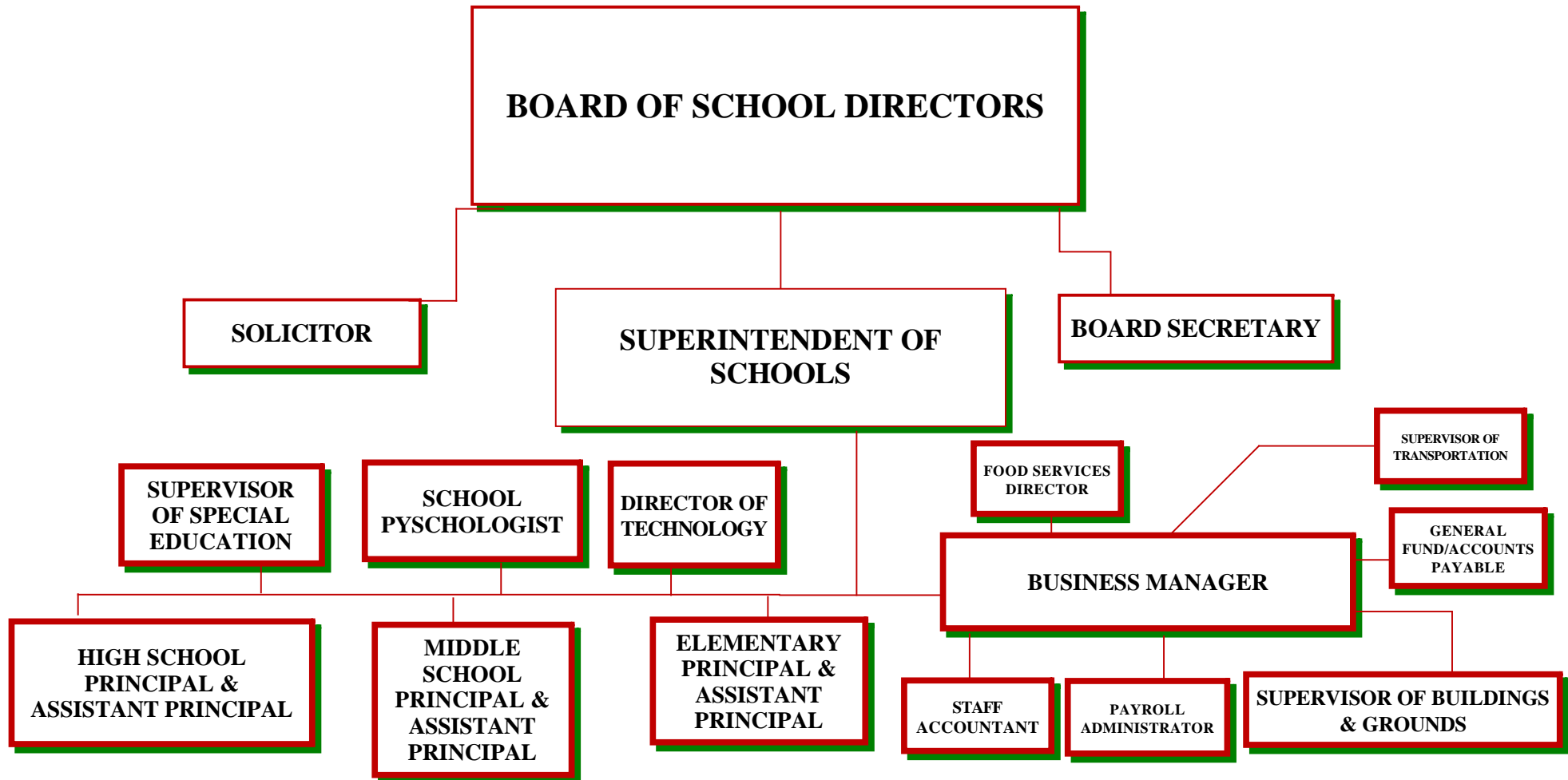
Contact Person Telephone Number

(570)326-0770

Contact Person Fax Number

LOYALSOCK TOWNSHIP SCHOOL DISTRICT

Organizational Chart 2018-2019



SCHOOL PSYCHOLOGIST ADDED

<u>Val Number</u>	<u>Description</u>	<u>Justification</u>
30501	Revenue Detail: AFR amount must equal PDE FAI system amount. 7311, AFR Rev Detail: \$143,859.67 7311, PDE FAI System: \$129,847.55	The difference of \$14,012.12 is due to the 2017-2018 balance due payment received in 2018-2019 and recognized in 2018-2019.
50440	SESS - 2260 Instruction and Curriculum Development Services: SESS Schedule amounts for Special Education vary from prior year by 40% or more. Correct the data or enter a justification. SESS Schedule 2260: \$42,390.22 Prior Year SESS Schedule 2260: \$16,594.29	Increase is due to Director of Special Education salary and benefits.
50450	SESS - 2350 Legal and Accounting Services: SESS Schedule amounts for Special Education vary from prior year by 40% or more. Correct the data or enter a justification. SESS Schedule 2350: \$1,455.05 Prior Year SESS Schedule 2350: \$768.87	Increase in lawyer fees from the previous year.

LEA : 117414203 Loyalsock Township SD

Printed 1/7/2020 11:42:59 AM

Amounts Expressed in Whole Dollars		<u>General Fund</u> <u>(10)</u>	<u>Public Purpose Trust</u> <u>(27)</u>	<u>Other Compt Approved</u> <u>(28)</u>	<u>Athletic / Activity</u> <u>(29)</u>	<u>Capital Reserve (690.</u> <u>1850)</u> <u>(31)</u>
Assets And Deferred Outflows Of Resources						
Assets						
0100	Cash and Cash Equivalents	7,038,634				
0110	Investments	1,509,562				
0120	Taxes Receivable	274,115				
0130	Due From Other Funds	76,755				
0141	Due From Other Governments	449,655				
0142	State Revenue Receivable	546,055				
0143	Federal Revenue Receivable	69,344				
0145	Other Intergovernmental Revenue Receivable					
0146	Due from Primary Government					
0147	Due from Component Unit					
0150	Other Receivables	8,090				
0170	Inventories					
0180	Prepaid Expenses (Expenditures)	196,154				
0190	Other Current Assets					
Total Assets		\$10,168,364				
0910	Deferred Outflows of Resources					
Total Assets And Deferred Outflows Of Resources		\$10,168,364				

LEA : 117414203 Loyalsock Township SD

Printed 1/7/2020 11:42:59 AM

Amounts Expressed in Whole Dollars		<u>Capital Reserve (1431</u> <u>(32)</u>	<u>Other Capital Projects</u> <u>Fund</u> <u>(39)</u>	<u>Debt Service</u> <u>(40)</u>	<u>Permanent</u> <u>(90)</u>	<u>Total Governmental</u> <u>Funds</u>
Assets And Deferred Outflows Of Resources						
Assets						
0100	Cash and Cash Equivalents	800,141	101,998			7,940,773
0110	Investments					1,509,562
0120	Taxes Receivable					274,115
0130	Due From Other Funds					76,755
0141	Due From Other Governments					449,655
0142	State Revenue Receivable					546,055
0143	Federal Revenue Receivable					69,344
0145	Other Intergovernmental Revenue Receivable					
0146	Due from Primary Government					
0147	Due from Component Unit					
0150	Other Receivables					8,090
0170	Inventories					
0180	Prepaid Expenses (Expenditures)					196,154
0190	Other Current Assets					
Total Assets		\$800,141	\$101,998			\$11,070,503
0910	Deferred Outflows of Resources					
Total Assets And Deferred Outflows Of Resources		\$800,141	\$101,998			\$11,070,503

LEA : 117414203 Loyalsock Township SD

Printed 1/7/2020 11:42:59 AM

Amounts Expressed in Whole Dollars		<u>General Fund</u> <u>(10)</u>	<u>Public Purpose Trust</u> <u>(27)</u>	<u>Other Compt Approved</u> <u>(28)</u>	<u>Athletic / Activity</u> <u>(29)</u>	<u>Capital Reserve (690.</u> <u>1850)</u> <u>(31)</u>
Liabilities And Deferred Inflows Of Resources And Fund Balances						
Liabilities						
0400	Due to Other Funds	67,317				
0411	Due to Other Governments	420,021				
0412	Due to Primary Government					
0413	Due to Component Unit					
0420	Accounts Payable	71,223				
0430	Contracts Payable					
0440	Current Portion of Long-Term Debt					
0450	Short-Term Payables					
0461	Accrued Salaries and Benefits	2,212,876				
0462	Payroll Deductions and Withholding	1,172				
0480	Unearned Revenues	364,914				
0490	Other Current Liabilities	48,050				
Total Liabilities		\$3,185,573				
0950	Deferred Inflows of Resources	239,528				
Fund Balances						
0810	Nonspendable Fund Balance	196,154				
0820	Restricted Fund Balance					
0830	Committed Fund Balance	2,995,000				
0840	Assigned Fund Balance	442,256				
0850	Unassigned Fund Balance	3,109,853				
Total Fund Balances		\$6,743,263				
Total Liabilities, Deferred Inflows Of Resources And Fund Balances		\$10,168,364				

LEA : 117414203 Loyalsock Township SD

Printed 1/7/2020 11:42:59 AM

Amounts Expressed in Whole Dollars		<u>Capital Reserve (1431)</u> <u>(32)</u>	<u>Other Capital Projects</u> <u>Fund</u> <u>(39)</u>	<u>Debt Service</u> <u>(40)</u>	<u>Permanent</u> <u>(90)</u>	<u>Total Governmental</u> <u>Funds</u>
Liabilities And Deferred Inflows Of Resources And Fund Balances						
Liabilities						
0400	Due to Other Funds					67,317
0411	Due to Other Governments					420,021
0412	Due to Primary Government					
0413	Due to Component Unit					
0420	Accounts Payable	24,371	1,002			96,596
0430	Contracts Payable					
0440	Current Portion of Long-Term Debt					
0450	Short-Term Payables					
0461	Accrued Salaries and Benefits					2,212,876
0462	Payroll Deductions and Withholding					1,172
0480	Unearned Revenues					364,914
0490	Other Current Liabilities					48,050
Total Liabilities		\$24,371	\$1,002			\$3,210,946
0950	Deferred Inflows of Resources					239,528
Fund Balances						
0810	Nonspendable Fund Balance					196,154
0820	Restricted Fund Balance	775,770	100,996			876,766
0830	Committed Fund Balance					2,995,000
0840	Assigned Fund Balance					442,256
0850	Unassigned Fund Balance					3,109,853
Total Fund Balances		\$775,770	\$100,996			\$7,620,029
Total Liabilities, Deferred Inflows Of Resources And Fund Balances		\$800,141	\$101,998			\$11,070,503

Amounts Expressed in Whole Dollars		<u>General Fund</u> <u>(10)</u>	<u>Public Purpose Trust</u> <u>(27)</u>	<u>Other Compt Approved</u> <u>(28)</u>	<u>Athletic / Activity</u> <u>(29)</u>	<u>Capital Reserve (690.</u> <u>1850)</u> <u>(31)</u>
Revenues						
6000	Revenue from Local Sources	16,208,629				
7000	Revenue from State Sources	7,014,713				
8000	Revenue from Federal Sources	357,494				
Total Revenues		\$23,580,836				
Expenditures						
1000	Instruction	13,607,673				
2000	Support Services	6,663,021				
3000	Operation of Non-Instructional Services	671,905				
4000	Facilities Acquisition, Construction and Improvement Services					
5110	Debt Service	171,578				
5130	Refund of Prior Year Revenues / Receipts					
Total Expenditures		\$21,114,177				
Excess (Deficiency) Of Revenues Over Expenditures		\$2,466,659				
Other Financing Sources (Uses)						
9110	Face Value of Bonds Issued					
9120	Proceeds from Refunding of Bonds					
9130	Bond Premiums					
9200	Proceeds from Extended-Term Financing					
9300	Interfund Transfers - IN					
9400	Sale of or Compensation for Loss of Fixed Assets	13,550				
9710	Transfers from Component Units					
9720	Transfers from Primary Governments					
9910	Other Financing Sources Not Listed in the 9000 Series					
9990	Insurance Recoveries					
5120	Debt Service – Refunded Bonds					
5150	Bond Discounts					
5200	Interfund Transfers – Out	2,579,668				
5300	Transfers Out to Component Units/Primary Governments					
Total Other Financing Sources (Uses)		(\$2,566,118)				

Amounts Expressed in Whole Dollars	<u>Capital Reserve (1431)</u> <u>(32)</u>	<u>Other Capital Projects</u> <u>Fund</u> <u>(39)</u>	<u>Debt Service</u> <u>(40)</u>	<u>Permanent</u> <u>(90)</u>	<u>Total Governmental</u> <u>Funds</u>
Revenues					
6000 Revenue from Local Sources	15,579	3,746			16,227,954
7000 Revenue from State Sources					7,014,713
8000 Revenue from Federal Sources					357,494
Total Revenues	\$15,579	\$3,746			\$23,600,161
Expenditures					
1000 Instruction					13,607,673
2000 Support Services	206,308				6,869,329
3000 Operation of Non-Instructional Services	20,000				691,905
4000 Facilities Acquisition, Construction and Improvement Services	99,186	99,940			199,126
5110 Debt Service			2,329,668		2,501,246
5130 Refund of Prior Year Revenues / Receipts					
Total Expenditures	\$325,494	\$99,940	\$2,329,668		\$23,869,279
Excess (Deficiency) Of Revenues Over Expenditures	(\$309,915)	(\$96,194)	(\$2,329,668)		(\$269,118)
Other Financing Sources (Uses)					
9110 Face Value of Bonds Issued					
9120 Proceeds from Refunding of Bonds					
9130 Bond Premiums					
9200 Proceeds from Extended-Term Financing					
9300 Interfund Transfers - IN	250,000		2,329,668		2,579,668
9400 Sale of or Compensation for Loss of Fixed Assets					13,550
9710 Transfers from Component Units					
9720 Transfers from Primary Governments					
9910 Other Financing Sources Not Listed in the 9000 Series					
9990 Insurance Recoveries					
5120 Debt Service – Refunded Bonds					
5150 Bond Discounts					
5200 Interfund Transfers – Out					2,579,668
5300 Transfers Out to Component Units/Primary Governments					
Total Other Financing Sources (Uses)	\$250,000		\$2,329,668		\$13,550

Amounts Expressed in Whole Dollars		<u>General Fund</u> <u>(10)</u>	<u>Public Purpose Trust</u> <u>(27)</u>	<u>Other Compt Approved</u> <u>(28)</u>	<u>Athletic / Activity</u> <u>(29)</u>	<u>Capital Reserve</u> <u>(690.</u> <u>1850)</u> <u>(31)</u>
Special And Extraordinary Items						
9920	Special Items – Gains					
9930	Extraordinary Items – Gains					
5520	Special Items – Losses					
5530	Extraordinary Items – Losses					
Net Change In Fund Balances		(\$99,459)				
Fund Balance						
0001	Fund Balance - Beginning of Fiscal Year	6,842,721				
Fund Balance - End Of Year		\$6,743,262				

Amounts Expressed in Whole Dollars		<u>Capital Reserve (1431</u> <u>(32)</u>	<u>Other Capital Projects</u> <u>Fund</u> <u>(39)</u>	<u>Debt Service</u> <u>(40)</u>	<u>Permanent</u> <u>(90)</u>	<u>Total Governmental</u> <u>Funds</u>
Special And Extraordinary Items						
9920 Special Items – Gains						
9930 Extraordinary Items – Gains						
5520 Special Items – Losses						
5530 Extraordinary Items – Losses						
Net Change In Fund Balances		(\$59,915)	(\$96,194)			(\$255,568)
Fund Balance						
0001 Fund Balance - Beginning of Fiscal Year		835,684	197,190			7,875,595
Fund Balance - End Of Year		\$775,769	\$100,996			\$7,620,027

Amounts Expressed in Whole Dollars		<u>Food Service</u> <u>(51)</u>	<u>Child Care</u> <u>Operations</u> <u>(52)</u>	<u>Other Enterprise</u> <u>(58)</u>	<u>TOTAL</u>	<u>Internal Service</u> <u>(60)</u>
Assets And Deferred Outflows Of Resources						
Current Assets						
0100	Cash and Cash Equivalents	556,650			556,650	
0110	Investments					
0130	Due From Other Funds	67,317			67,317	
0141	Due From Other Governments					
0142	State Revenue Receivable	424			424	
0143	Federal Revenue Receivable	12,423			12,423	
0146	Due from Primary Government					
0147	Due from Component Unit					
0150	Other Receivables	2,379			2,379	
0170	Inventories	3,040			3,040	
0180	Prepaid Expenses (Expenditures)					
0190	Other Current Assets					
Total Current Assets		\$642,233			\$642,233	
Noncurrent Assets						
0211	Land					
0212	Site Improvements (Net)					
0220	Buildings and Building Improvements (Net)					
0230	Machinery, Equipment and Furniture (Net)	151,479			151,479	
0250	Construction in Progress					
0260	Long Term Prepayments					
0290	Other Noncurrent Assets					
Total Noncurrent Assets		\$151,479			\$151,479	
0910	Deferred Outflows of Resources	129,340			129,340	
Total Assets And Deferred Outflows Of Resources		\$923,052			\$923,052	

Amounts Expressed in Whole Dollars	<u>Food Service</u> <u>(51)</u>	<u>Child Care</u> <u>Operations</u> <u>(52)</u>	<u>Other Enterprise</u> <u>(58)</u>	<u>TOTAL</u>	<u>Internal Service</u> <u>(60)</u>
Liabilities And Deferred Inflows Of Resources And Net Position					
Current Liabilities					
0400 Due to Other Funds	76,755			76,755	
0411 Due to Other Governments					
0413 Due to Component Unit					
0420 Accounts Payable	19			19	
0430 Contracts Payable					
0440 Current Portion of Long-Term Debt	708			708	
0450 Short-Term Payables					
0461 Accrued Salaries and Benefits	3,190			3,190	
0462 Payroll Deductions and Withholding					
0480 Unearned Revenues	19,821			19,821	
0490 Other Current Liabilities					
Total Current Liabilities	\$100,493			\$100,493	
Noncurrent Liabilities					
0510 Bonds Payable					
0520 Extended-Term Financing Agreements Payable					
0530 Lease-Purchase Obligations	581			581	
0540 Accumulated Compensated Absences	10,513			10,513	
0550 Authority Lease Obligations					
0560 Other Post-Employment Benefits (OPEB)	40,572			40,572	
0570 Net Pension Liability	934,164			934,164	
0599 Other Noncurrent Liabilities					
Total Noncurrent Liabilities	\$985,830			\$985,830	
Total Liabilities	\$1,086,323			\$1,086,323	
0950 Deferred Inflows of Resources	41,233			41,233	
Net Position					
0791 Net Investment in Capital Assets	150,190			150,190	
0008 Restricted Net Position (0792 – 0798)					
0799 Unrestricted Net Position	(354,694)			(354,694)	
Total Net Position	(\$204,504)			(\$204,504)	
Total Liabilities And Deferred Inflows Of Resources And Net Position	\$923,052			\$923,052	

Amounts Expressed in Whole Dollars		<u>Food Service</u> <u>(51)</u>	<u>Child Care Operations</u> <u>(52)</u>	<u>Other Enterprise</u> <u>(58)</u>	<u>TOTAL</u>	<u>Internal Service</u> <u>(60)</u>
Operating Revenues						
6600	Food Service Revenue	503,811			503,811	
0071	Charges for Services					
0072	Other Operating Revenue					
Total Operating Revenues		\$503,811			\$503,811	
Operating Expenses						
100	Personnel Services – Salaries	317,357			317,357	
200	Personnel Services – Employee Benefits	209,429			209,429	
300	Purchased Professional and Technical Services					
400	Purchased Property Services	649			649	
500	Other Purchased Services	9,819			9,819	
600	Supplies	495,953			495,953	
740	Depreciation	48,589			48,589	
810	Dues and Fees	2,395			2,395	
890	Miscellaneous Expenditures					
Total Operating Expenses		\$1,084,191			\$1,084,191	
Operating Income (Loss)		(\$580,380)			(\$580,380)	
Non Operating Revenues (Expenses)						
6500	Earnings on Investments	11,407			11,407	
6920	Contributions and Donations from Private Sources					
6930	Gains or Losses on Sale of Fixed Assets					
6991	Refunds of a Prior Year Expenditure					
7000	Revenue from State Sources	91,391			91,391	
8000	Revenue from Federal Sources	482,965			482,965	
9990	Insurance Recoveries					
820	Claims and Judgments Against the LEA					
830	Interest					
TOTAL Non Operating Revenues (Expenses)		\$585,763			\$585,763	
Income (Loss) Before Contributions And Transfers		\$5,383			\$5,383	

Amounts Expressed in Whole Dollars	<u>Food Service</u> <u>(51)</u>	<u>Child Care Operations</u> <u>(52)</u>	<u>Other Enterprise</u> <u>(58)</u>	<u>TOTAL</u>	<u>Internal Service</u> <u>(60)</u>
Contributions, Transfers, and Special and Extraordinary Items					
5200 Interfund Transfers – Out					
5300 Transfers Out to Component Units/Primary Governments					
5520 Special Items – Losses					
5530 Extraordinary Items – Losses					
9300 Interfund Transfers - IN					
9500 Capital Contributions					
9700 Transfers IN From Component Units/Primary Governments					
9920 Special Items – Gains					
9930 Extraordinary Items – Gains					
Change In Net Position	\$5,383			\$5,383	
0002 Net Position - Beginning of Fiscal Year	(209,887)			(209,887)	
0003 Accounting Changes / Residual Equity Transfers					
Net Position - End Of Year	(\$204,504)			(\$204,504)	

Amounts Expressed in Whole Dollars	<u>Food Service</u> <u>(51)</u>	<u>Child Care Operations</u> <u>(52)</u>	<u>Other Enterprise</u> <u>(58)</u>	<u>TOTAL</u>	<u>Internal Service(60)</u>
Cash Flows From Operating Activities					
0011 Cash Receipts From Users	506,064			506,064	
0012 Cash Receipts From Assessments Made to Other Funds					
0013 Cash Receipts From Earnings on Investments					
0014 Cash Receipts From Other Operating Revenue					
0015 Cash Payments To Employees For Services	523,263			523,263	
0016 Cash Payments For Insurance Claims					
0017 Cash Payments To Suppliers For Goods and Services	444,998			444,998	
0018 Cash Payments For Other Operating Expenses	2,395			2,395	
Net Cash Provided By (Used For) Operating Activities	(\$464,592)			(\$464,592)	
Cash Flows From Non-Capital Financing Activities					
0021 Receipts From Local Sources - 6000					
0022 Receipts From State Sources - 7000	82,397			82,397	
0023 Receipts From Federal Sources -8000	412,363			412,363	
0024 Notes and Loans Received (Repaid)	(639)			(639)	
0025 Interest Paid on Notes/Loans - 5100-830					
0026 Operating Transfers In (Out)/Residual Equity Trans					
0027 Operating Transfers In (Out) Primary Government / Comp Unit					
0028 Receipts From Refund of Prior Year Expenditures - 6991					
0029 Special and Extraordinary Gains (losses)					
0030 Receipts from Insurance Recoveries -9990					
Net Cash Prov By (Used for) Non-Capital Financing Activities	\$494,121			\$494,121	
Cash Flows From Capital and Related Financing Activities					
0031 Payments For Fac Acq, Const, and Imp - 4000					
0032 Gain / (Loss) on Sale of Fixed Assets - 6930					
0033 Proceeds From Extended Term Financing - 9200					
0034 Principal Paid on Financing Agreements					
0035 Interest Paid on Financing Agreements - 5100-830					
0036 (Inc) Dec in Contributed Capital					
Net Cash Prov By (Used for) Capital and Related Financing Activities					
Cash Flows From Investing Activities					
0041 Earnings on Investments - 6500	11,407			11,407	
0042 Purchase of Inv Securities / Deposits to Inv Pools					
0043 Receipts From Investment Pool Withdrawals					
0044 Proceeds from Sale and Maturity of Inv Securities					

LEA : 117414203 Loyalsock Township SD

Printed 1/7/2020 11:43:40 AM

0045 Loans Received (Paid)			
Net Cash Prov By (Used for) Investing Activities	\$11,407		\$11,407

LEA : 117414203 Loyalsock Township SD

Printed 1/7/2020 11:43:40 AM

	Food Service (51)	Child Care Operations (52)	Other Enterprise (58)	TOTAL	Internal Service (60)
Net Increase (Decrease) in Cash Flows	40,936			40,936	
0004 Cash and Cash Equivalents Beginning of Year	515,714			515,714	
Cash and Cash Equivalents at Year End	\$556,650			\$556,650	
Reconciliation of Operating Income (Loss) To Net Cash Provided by (Used For) Operating Activities					
0005 Operating Income (Loss) per REP	(580,380)			(580,380)	
Adjustments					
0051 Depreciation and Net Amortization	138,667			138,667	
0052 Provision for Uncollectible Accounts					
0053 Other Adjustments	59,010			59,010	
Effect of Changes in Assets, Liabilities, Deferred Outflows and Deferred Inflows					
0054 (Inc) Dec In Accounts Receivable (0120-0150)	241			241	
0055 Advances to Other Funds (0160)					
0056 (Inc) Dec in Inventories (0170)	(693)			(693)	
0057 (Inc) Dec in Prepaid Expenses (0180)					
0058 (Inc) Dec in Other Current or Noncurrent Assets					
0064 Deferred Outflows (0910)	(63,109)			(63,109)	
0059 Inc (Dec) in Accounts Payable (0400-0450)	15			15	
0060 Inc (Dec) in Accrued Salaries/Benefits (0461)	1,500			1,500	
0065 Inc (Dec) in Net Pension Liabilities (0570)	(36,625)			(36,625)	
0066 Inc (Dec) in Other Postemp Benefit Oblig (0560)	531			531	
0061 Inc (Dec) in Payroll Deductions/Withholding (0462)					
0062 Inc (Dec) in Unearned Revenue (0480)	4,396			4,396	
0063 Inc (Dec) in Other Current or Noncurrent Liabilities	(1,207)			(1,207)	
0067 Deferred Inflows (0950)	13,062			13,062	
Total Adjustments	\$115,788			\$115,788	
Cash Provided By (Used for) Total	(\$464,592)			(\$464,592)	

COMBINED STATEMENT OF CASH FLOWS
SCHEDULE OF NONCASH INVESTING, CAPITAL, AND FINANCING ACTIVITIES

Explanation of Transaction and Balance Sheet Effect	Amount
Total	

LEA : 117414203 Loyalsock Township SD

Printed 1/7/2020 11:43:50 AM

Amounts Expressed in Whole Dollars	<u>Private Purpose Trust</u> <u>(71)</u>	<u>Investment Trust</u> <u>(72)</u>	<u>Pension Trust</u> <u>(73)</u>	<u>Activity</u> <u>(81)</u>
Assets And Deferred Outflows Of Resources				
Assets				
0100 Cash and Cash Equivalents	61,817			101,333
0110 Investments				
0130 Due From Other Funds				
0147 Due from Component Unit				
0150 Other Receivables				
0170 Inventories				
0180 Prepaid Expenses (Expenditures)				
0190 Other Current Assets				
0220 Buildings and Building Improvements (Net)				
0230 Machinery, Equipment and Furniture (Net)				
Total Assets	\$61,817			\$101,333
0910 Deferred Outflows of Resources				
Total Assets And Deferred Outflows Of Resources	\$61,817			\$101,333

LEA : 117414203 Loyalsock Township SD

Printed 1/7/2020 11:43:50 AM

Amounts Expressed in Whole Dollars		<u>Other Agency</u> <u>(89)</u>	<u>Discrete Component Units</u> <u>(98)</u>	<u>Discrete Component Units</u> <u>(99)</u>	<u>Total Fiduciary Funds</u>
Assets And Deferred Outflows Of Resources					
Assets					
0100	Cash and Cash Equivalents				163,150
0110	Investments				
0130	Due From Other Funds				
0147	Due from Component Unit				
0150	Other Receivables				
0170	Inventories				
0180	Prepaid Expenses (Expenditures)				
0190	Other Current Assets				
0220	Buildings and Building Improvements (Net)				
0230	Machinery, Equipment and Furniture (Net)				
Total Assets					\$163,150
0910	Deferred Outflows of Resources				
Total Assets And Deferred Outflows Of Resources					\$163,150

LEA : 117414203 Loyalsock Township SD

Printed 1/7/2020 11:43:50 AM

Amounts Expressed in Whole Dollars	<u>Private Purpose Trust</u> <u>(71)</u>	<u>Investment Trust</u> <u>(72)</u>	<u>Pension Trust</u> <u>(73)</u>	<u>Activity</u> <u>(81)</u>
Liabilities, Deferred Inflows Of Resources And Net Position				
Liabilities				
0400 Due to Other Funds				
0411 Due to Other Governments				
0412 Due to Primary Government				
0413 Due to Component Unit				
0420 Accounts Payable				2,338
0430 Contracts Payable				
0450 Short-Term Payables				
0461 Accrued Salaries and Benefits				
0462 Payroll Deductions and Withholding				
0480 Unearned Revenues				
0490 Other Current Liabilities				98,995
Total Liabilities				\$101,333
0950 Deferred Inflows of Resources				
Net Position				
0791 Net Investment in Capital Assets				
0009 Restricted Net Position (0792 – 0798)	61,817			
0799 Unrestricted Net Position				
Total Net Position	\$61,817			
Total Liabilities, Deferred Inflows Of Resources And Net Position	\$61,817			\$101,333

LEA : 117414203 Loyalsock Township SD

Printed 1/7/2020 11:43:50 AM

Amounts Expressed in Whole Dollars

<u>Other Agency</u> <u>(89)</u>	<u>Discrete Component Units</u> <u>(98)</u>	<u>Discrete Component Units</u> <u>(99)</u>	<u>Total Fiduciary Funds</u>
------------------------------------	--	--	------------------------------

Liabilities, Deferred Inflows Of Resources And Net Position

Liabilities

0400	Due to Other Funds		
0411	Due to Other Governments		
0412	Due to Primary Government		
0413	Due to Component Unit		
0420	Accounts Payable		2,338
0430	Contracts Payable		
0450	Short-Term Payables		
0461	Accrued Salaries and Benefits		
0462	Payroll Deductions and Withholding		
0480	Unearned Revenues		
0490	Other Current Liabilities		98,995

Total Liabilities			\$101,333
--------------------------	--	--	------------------

0950 Deferred Inflows of Resources

Net Position

0791	Net Investment in Capital Assets		
0009	Restricted Net Position (0792 – 0798)		61,817
0799	Unrestricted Net Position		

Total Net Position			\$61,817
---------------------------	--	--	-----------------

Total Liabilities, Deferred Inflows Of Resources And Net Position			\$163,150
--	--	--	------------------

LEA : 117414203 Loyalsock Township SD

Printed 1/7/2020 11:43:53 AM

Amounts Expressed in Whole Dollars	<u>Private Purpose Trust</u> <u>(71)</u>	<u>Investment Trust</u> <u>(72)</u>	<u>Pension Trust</u> <u>(73)</u>	<u>Discrete Component</u> <u>Units</u> <u>(98)</u>	<u>Discrete Component</u> <u>Units</u> <u>(99)</u>	<u>Total Fiduciary</u> <u>Funds</u>
Additions						
0091 Gifts and Contributions	3,469					3,469
0092 Other Additions	220					220
Deductions						
0093 Scholarships Awarded	7,200					7,200
0094 Other Deductions						
Change In Net Position	(\$3,511)					(\$3,511)
0006 Net Position – Beginning of Fiscal Year	65,328					65,328
0007 Net Position Held in Trust for Pension Benefits						
Net Position - End of Fiscal Year	\$61,817					\$61,817

	Revenue Reported In Current Year	Current Year Tax Accrual	Prior Year Tax Accrual	Taxes Collected In Current Year
Revenue from Local Sources				
6111 Current Real Estate Taxes	10,390,826.30			10,390,826.30
6112 Interim Real Estate Taxes	24,879.90			24,879.90
6113 Public Utility Realty Taxes	14,819.02			14,819.02
6114 Payments in Lieu of Current Taxes - State / Local	120,674.18			120,674.18
6143 Current Act 511 Local Services Taxes	32,977.81			32,977.81
6151 Current Act 511 Earned Income Taxes	3,362,838.87			3,362,838.87
6153 Current Act 511 Real Estate Transfer Taxes	723,166.45			723,166.45
6155 Current Act 511 Business Privilege Taxes	356,527.72			356,527.72
6411 Delinquent Real Estate Taxes	270,205.85			270,205.85
6452 Delinquent Act 511 Occupation Taxes	672.18			672.18
6455 Delinquent Act 511 Business Privilege Taxes	59,094.56			59,094.56
6500 Earnings on Investments	178,302.16			
6700 Revenues from LEA Activities	71,985.72			
6810 Revenue from Local Governmental Units	55,000.00			
6821 State Revenue Received from Other Pennsylvania Public LEAs	26,999.69			
6832 Federal IDEA Revenue Received as Pass Through	245,835.00			
6910 Rentals	209,182.76			
6920 Contributions and Donations from Private Sources	14,083.84			
6942 Summer School Tuition	2,250.00			
6944 Receipts from Other LEAs in Pennsylvania - Education	23,545.38			
6991 Refunds of a Prior Year Expenditure	12,428.73			
6999 Other Revenues Not Specified Above	12,333.20			
TOTAL Revenue from Local Sources	\$16,208,629.32			\$15,356,682.84

	Revenue Reported In Current Year			
Revenue from State Sources				
7110 Basic Education Funding	3,290,844.20			
7160 Tuition for Orphans Subsidy	23,202.32			
7271 Special Education funds for School-Aged Pupils	742,677.64			
7311 Pupil Transportation Subsidy	143,859.67			
7312 Nonpublic and Charter School Pupil Transportation Subsidy	1,540.00			
7320 Rental and Sinking Fund Payments / Building Reimbursement Subsidy	283,680.81			
7330 Health Services (Medical, Dental, Nurse, Act 25)	26,797.63			
7340 State Property Tax Reduction Allocation	393,648.70			
7361 School Safety and Security Grants	50,585.00			
7505 Ready to Learn Block Grant	139,676.00			
7810 State Share of Social Security and Medicare Taxes	350,473.05			
7820 State Share of Retirement Contributions	1,567,728.33			
TOTAL Revenue from State Sources	\$7,014,713.35			

Revenue Reported In Current Year				
Revenue from Federal Sources				
8110	Payments for Federally Impacted Areas	4,223.57		
8514	NCLB, Title I - Improving the Academic Achievement of the Disadvantaged	281,982.98		
8515	NCLB, Title II - Preparing, Training and Recruiting High Quality Teachers and Principals	49,751.00		
8517	NCLB, Title IV - 21St Century Schools	20,653.00		
8810	School-Based Access Medicaid Reimbursement Program (SBAP) Reimbursements (Access)	883.53		
TOTAL Revenue from Federal Sources		\$357,494.08		

	Revenue Reported In Current Year			
<u>Other Financing Sources</u>				
9400 Sale of or Compensation for Loss of Fixed Assets	13,550.00			
TOTAL Other Financing Sources	\$13,550.00			
TOTAL FROM ALL SOURCES	\$23,594,386.75			\$15,356,682.84

Revenue from Local Sources	16,208,629.32
Revenue from State Sources	7,014,713.35
Revenue from Federal Sources	357,494.08
Other Financing Sources	13,550.00
TOTAL FROM ALL SOURCES	\$23,594,386.75

LEA : 117414203 Loyalsock Township SD

Printed 1/7/2020 11:44:15 AM

General Fund (10)	
1000 Instruction	<u>Total</u>
100 <u>Personnel Services – Salaries</u>	
100 Personnel Services – Salaries	6,540,938.38
Total Personnel Services – Salaries	\$6,540,938.38
200 <u>Personnel Services – Employee Benefits</u>	
210 Group Insurance – Contracted Provider	1,334,425.28
220 Social Security Contributions	476,501.47
230 PSERS Retirement Contributions	2,140,466.98
250 Unemployment Compensation	28,855.15
260 Workers' Compensation	19,564.93
291 Other Retirement Plans	6,160.00
Total Personnel Services – Employee Benefits	\$4,005,973.81
300 <u>Purchased Professional and Technical Services</u>	
310 Official / Administrative Services	38,177.66
322 Professional Educational Services – Ius	1,616,670.57
329 Professional Educational Services – Other	124,498.01
330 Other Professional Services	3,440.00
Total Purchased Professional and Technical Services	\$1,782,786.24
400 <u>Purchased Property Services</u>	
430 Repairs and Maintenance Services	37,667.18
440 Rentals	5,716.26
Total Purchased Property Services	\$43,383.44
500 <u>Other Purchased Services</u>	
561 Tuition To Other School Districts Within the State	63,791.61
562 Tuition To Pennsylvania Charter Schools	390,632.32
564 Tuition To Career and Technology Centers	266,046.05
566 Tuition To Institutions of Higher Education and Technical Institutes	4,500.00
568 Tuition To Private Residential Rehabilitative Institutions (PRRI) [In-State] and Detention Centers	100,752.64
580 Travel	1,349.86
594 IU Payment By Withholding for Institutionalized Children's Programs – Special Classes	3,996.98
Total Other Purchased Services	\$831,069.46
600 <u>Supplies</u>	
610 General Supplies	161,211.06
640 Books and Periodicals	63,721.19
650 Supplies & Fees – Technology Related	135,181.37
Total Supplies	\$360,113.62
700 <u>Property</u>	
752 Capital Equipment – Original and Additional	32,560.00
Total Property	\$32,560.00
800 <u>Other Objects</u>	
810 Dues and Fees	10,848.00
Total Other Objects	\$10,848.00
Total 1000 Instruction	\$13,607,672.95

LEA : 117414203 Loyalsock Township SD

Printed 1/7/2020 11:44:15 AM

General Fund (10)				
1100 Regular Programs – Elementary / Secondary	<u>Elementary</u>	<u>Secondary</u>	<u>Federal</u>	<u>Total</u>
100 <u>Personnel Services – Salaries</u>				
100 Personnel Services – Salaries	2,186,332.76	3,082,437.35	244,910.14	5,513,680.25
Total Personnel Services – Salaries	\$2,186,332.76	\$3,082,437.35	\$244,910.14	\$5,513,680.25
200 <u>Personnel Services – Employee Benefits</u>				
210 Group Insurance – Contracted Provider	457,205.49	609,330.27	29,832.61	1,096,368.37
220 Social Security Contributions	158,166.57	224,997.07	18,004.09	401,167.73
230 PSERS Retirement Contributions	715,932.36	1,011,923.73	81,062.43	1,808,918.52
250 Unemployment Compensation	7,682.77	11,540.26	1,618.00	20,841.03
260 Workers' Compensation	6,574.74	4,720.97	1,591.94	12,887.65
291 Other Retirement Plans		6,160.00		6,160.00
Total Personnel Services – Employee Benefits	\$1,345,561.93	\$1,868,672.30	\$132,109.07	\$3,346,343.30
300 <u>Purchased Professional and Technical Services</u>				
310 Official / Administrative Services	38,177.66			38,177.66
329 Professional Educational Services – Other		124,498.01		124,498.01
330 Other Professional Services			3,440.00	3,440.00
Total Purchased Professional and Technical Services	\$38,177.66	\$124,498.01	\$3,440.00	\$166,115.67
400 <u>Purchased Property Services</u>				
430 Repairs and Maintenance Services	10,626.29	26,275.29		36,901.58
Total Purchased Property Services	\$10,626.29	\$26,275.29		\$36,901.58
500 <u>Other Purchased Services</u>				
561 Tuition To Other School Districts Within the State		32,636.50		32,636.50
562 Tuition To Pennsylvania Charter Schools	57,284.44	193,335.00		250,619.44
566 Tuition To Institutions of Higher Education and Technical Institutes		4,500.00		4,500.00
568 Tuition To Private Residential Rehabilitative Institutions (PRRI) [In-State] and Detention Centers		100,752.64		100,752.64
580 Travel	99.00	122.00	1,038.86	1,259.86
Total Other Purchased Services	\$57,383.44	\$331,346.14	\$1,038.86	\$389,768.44
600 <u>Supplies</u>				
610 General Supplies	36,477.63	78,364.22	30,419.23	145,261.08
640 Books and Periodicals	30,887.70	17,157.06	247.00	48,291.76
650 Supplies & Fees – Technology Related	30,182.71	104,998.66		135,181.37
Total Supplies	\$97,548.04	\$200,519.94	\$30,666.23	\$328,734.21
700 <u>Property</u>				
752 Capital Equipment – Original and Additional		32,560.00		32,560.00
Total Property		\$32,560.00		\$32,560.00
800 <u>Other Objects</u>				
810 Dues and Fees		1,918.00	50.00	1,968.00
Total Other Objects		\$1,918.00	\$50.00	\$1,968.00
Total 1100 Regular Programs – Elementary / Secondary	\$3,735,630.12	\$5,668,227.03	\$412,214.30	\$9,816,071.45

LEA : 117414203 Loyalsock Township SD

Printed 1/7/2020 11:44:15 AM

General Fund (10)

1110 Regular Programs

	Elementary	Secondary	Federal	Total
100 <u>Personnel Services – Salaries</u>				
100 Personnel Services – Salaries	2,186,332.76	3,082,437.35		5,268,770.11
Total Personnel Services – Salaries	\$2,186,332.76	\$3,082,437.35		\$5,268,770.11
200 <u>Personnel Services – Employee Benefits</u>				
210 Group Insurance – Contracted Provider	457,205.49	609,330.27		1,066,535.76
220 Social Security Contributions	158,166.57	224,997.07		383,163.64
230 PSERS Retirement Contributions	715,932.36	1,011,923.73		1,727,856.09
250 Unemployment Compensation	7,682.77	11,540.26		19,223.03
260 Workers' Compensation	6,574.74	4,720.97		11,295.71
291 Other Retirement Plans		6,160.00		6,160.00
Total Personnel Services – Employee Benefits	\$1,345,561.93	\$1,868,672.30		\$3,214,234.23
300 <u>Purchased Professional and Technical Services</u>				
310 Official / Administrative Services	38,177.66			38,177.66
329 Professional Educational Services – Other		124,498.01		124,498.01
Total Purchased Professional and Technical Services	\$38,177.66	\$124,498.01		\$162,675.67
400 <u>Purchased Property Services</u>				
430 Repairs and Maintenance Services	10,626.29	26,275.29		36,901.58
Total Purchased Property Services	\$10,626.29	\$26,275.29		\$36,901.58
500 <u>Other Purchased Services</u>				
561 Tuition To Other School Districts Within the State		32,636.50		32,636.50
562 Tuition To Pennsylvania Charter Schools	57,284.44	193,335.00		250,619.44
566 Tuition To Institutions of Higher Education and Technical Institutes		4,500.00		4,500.00
568 Tuition To Private Residential Rehabilitative Institutions (PRRI) [In-State] and Detention Centers		100,752.64		100,752.64
580 Travel	99.00	122.00		221.00
Total Other Purchased Services	\$57,383.44	\$331,346.14		\$388,729.58
600 <u>Supplies</u>				
610 General Supplies	36,477.63	78,364.22		114,841.85
640 Books and Periodicals	30,887.70	17,157.06		48,044.76
650 Supplies & Fees – Technology Related	30,182.71	104,998.66		135,181.37
Total Supplies	\$97,548.04	\$200,519.94		\$298,067.98
700 <u>Property</u>				
752 Capital Equipment – Original and Additional		32,560.00		32,560.00
Total Property		\$32,560.00		\$32,560.00
800 <u>Other Objects</u>				
810 Dues and Fees		1,918.00		1,918.00
Total Other Objects		\$1,918.00		\$1,918.00
Total 1110 Regular Programs	\$3,735,630.12	\$5,668,227.03		\$9,403,857.15

LEA : 117414203 Loyalsock Township SD

Printed 1/7/2020 11:44:15 AM

General Fund (10)

1190 Federally-Funded Regular Programs

	<u>Elementary</u>	<u>Secondary</u>	<u>Federal</u>	<u>Total</u>
100 <u>Personnel Services – Salaries</u>				
100 Personnel Services – Salaries			244,910.14	244,910.14
Total Personnel Services – Salaries			\$244,910.14	\$244,910.14
200 <u>Personnel Services – Employee Benefits</u>				
210 Group Insurance – Contracted Provider			29,832.61	29,832.61
220 Social Security Contributions			18,004.09	18,004.09
230 PSERS Retirement Contributions			81,062.43	81,062.43
250 Unemployment Compensation			1,618.00	1,618.00
260 Workers' Compensation			1,591.94	1,591.94
Total Personnel Services – Employee Benefits			\$132,109.07	\$132,109.07
300 <u>Purchased Professional and Technical Services</u>				
330 Other Professional Services			3,440.00	3,440.00
Total Purchased Professional and Technical Services			\$3,440.00	\$3,440.00
500 <u>Other Purchased Services</u>				
580 Travel			1,038.86	1,038.86
Total Other Purchased Services			\$1,038.86	\$1,038.86
600 <u>Supplies</u>				
610 General Supplies			30,419.23	30,419.23
640 Books and Periodicals			247.00	247.00
Total Supplies			\$30,666.23	\$30,666.23
800 <u>Other Objects</u>				
810 Dues and Fees			50.00	50.00
Total Other Objects			\$50.00	\$50.00
Total 1190 Federally-Funded Regular Programs			\$412,214.30	\$412,214.30

LEA : 117414203 Loyalsock Township SD

Printed 1/7/2020 11:44:15 AM

General Fund (10)				
1200 Special Programs – Elementary / Secondary	<u>Elementary</u>	<u>Secondary</u>	<u>Federal</u>	<u>Total</u>
100 <u>Personnel Services – Salaries</u>				
100 Personnel Services – Salaries	282,079.96	578,405.97	154,251.00	1,014,736.93
Total Personnel Services – Salaries	\$282,079.96	\$578,405.97	\$154,251.00	\$1,014,736.93
200 <u>Personnel Services – Employee Benefits</u>				
210 Group Insurance – Contracted Provider	64,562.15	133,343.76	40,151.00	238,056.91
220 Social Security Contributions	20,672.77	44,180.77	9,554.00	74,407.54
230 PSERS Retirement Contributions	90,571.23	196,114.44	40,677.00	327,362.67
250 Unemployment Compensation	3,165.15	4,370.17	390.00	7,925.32
260 Workers' Compensation	1,833.50	3,950.37	812.00	6,595.87
Total Personnel Services – Employee Benefits	\$180,804.80	\$381,959.51	\$91,584.00	\$654,348.31
300 <u>Purchased Professional and Technical Services</u>				
322 Professional Educational Services – lus	764,704.06	712,099.35		1,476,803.41
Total Purchased Professional and Technical Services	\$764,704.06	\$712,099.35		\$1,476,803.41
400 <u>Purchased Property Services</u>				
430 Repairs and Maintenance Services		765.60		765.60
440 Rentals		5,716.26		5,716.26
Total Purchased Property Services		\$6,481.86		\$6,481.86
500 <u>Other Purchased Services</u>				
561 Tuition To Other School Districts Within the State	13,203.63	17,951.48		31,155.11
562 Tuition To Pennsylvania Charter Schools	17,501.61	122,511.27		140,012.88
580 Travel		90.00		90.00
594 IU Payment By Withholding for Institutionalized Children's Programs – Special Classes		3,996.98		3,996.98
Total Other Purchased Services	\$30,705.24	\$144,549.73		\$175,254.97
600 <u>Supplies</u>				
610 General Supplies	8,163.55	7,786.43		15,949.98
640 Books and Periodicals	193.02	15,236.41		15,429.43
Total Supplies	\$8,356.57	\$23,022.84		\$31,379.41
800 <u>Other Objects</u>				
810 Dues and Fees	195.00	8,685.00		8,880.00
Total Other Objects	\$195.00	\$8,685.00		\$8,880.00
Total 1200 Special Programs – Elementary / Secondary	\$1,266,845.63	\$1,855,204.26	\$245,835.00	\$3,367,884.89

LEA : 117414203 Loyalsock Township SD

Printed 1/7/2020 11:44:15 AM

General Fund (10)

1210 Life Skills Support

	<u>Elementary</u>	<u>Secondary</u>	<u>Federal</u>	<u>Total</u>
300 <u>Purchased Professional and Technical Services</u>				
322 Professional Educational Services – lus	100,579.30	53,088.80		153,668.10
Total Purchased Professional and Technical Services	\$100,579.30	\$53,088.80		\$153,668.10
Total 1210 Life Skills Support	\$100,579.30	\$53,088.80		\$153,668.10

LEA : 117414203 Loyalsock Township SD

Printed 1/7/2020 11:44:15 AM

General Fund (10)

1220 Sensory Support

	<u>Elementary</u>	<u>Secondary</u>	<u>Federal</u>	<u>Total</u>
300 <u>Purchased Professional and Technical Services</u>				
322 Professional Educational Services – lus	80,576.16	103,799.25		184,375.41
Total Purchased Professional and Technical Services	\$80,576.16	\$103,799.25		\$184,375.41
600 <u>Supplies</u>				
610 General Supplies	3,235.70			3,235.70
Total Supplies	\$3,235.70			\$3,235.70
Total 1220 Sensory Support	\$83,811.86	\$103,799.25		\$187,611.11

LEA : 117414203 Loyalsock Township SD

Printed 1/7/2020 11:44:15 AM

General Fund (10)

1230 Emotional Support

	<u>Elementary</u>	<u>Secondary</u>	<u>Federal</u>	<u>Total</u>
100 <u>Personnel Services – Salaries</u>				
100 Personnel Services – Salaries		2,500.00		2,500.00
Total Personnel Services – Salaries		\$2,500.00		\$2,500.00
200 <u>Personnel Services – Employee Benefits</u>				
210 Group Insurance – Contracted Provider		2,160.00		2,160.00
220 Social Security Contributions		190.63		190.63
250 Unemployment Compensation		25.00		25.00
260 Workers' Compensation		16.26		16.26
Total Personnel Services – Employee Benefits		\$2,391.89		\$2,391.89
300 <u>Purchased Professional and Technical Services</u>				
322 Professional Educational Services – Ius	157,850.04	97,234.85		255,084.89
Total Purchased Professional and Technical Services	\$157,850.04	\$97,234.85		\$255,084.89
600 <u>Supplies</u>				
610 General Supplies		1,205.12		1,205.12
640 Books and Periodicals	64.28	178.83		243.11
Total Supplies	\$64.28	\$1,383.95		\$1,448.23
Total 1230 Emotional Support	\$157,914.32	\$103,510.69		\$261,425.01

LEA : 117414203 Loyalsock Township SD

Printed 1/7/2020 11:44:15 AM

General Fund (10)				
1240 Academic Support	<u>Elementary</u>	<u>Secondary</u>	<u>Federal</u>	<u>Total</u>
100 <u>Personnel Services – Salaries</u>				
100 Personnel Services – Salaries	282,079.96	575,905.97	154,251.00	1,012,236.93
Total Personnel Services – Salaries	\$282,079.96	\$575,905.97	\$154,251.00	\$1,012,236.93
200 <u>Personnel Services – Employee Benefits</u>				
210 Group Insurance – Contracted Provider	64,562.15	131,183.76	40,151.00	235,896.91
220 Social Security Contributions	20,672.77	43,990.14	9,554.00	74,216.91
230 PSERS Retirement Contributions	90,571.23	196,114.44	40,677.00	327,362.67
250 Unemployment Compensation	3,165.15	4,345.17	390.00	7,900.32
260 Workers' Compensation	1,833.50	3,934.11	812.00	6,579.61
Total Personnel Services – Employee Benefits	\$180,804.80	\$379,567.62	\$91,584.00	\$651,956.42
300 <u>Purchased Professional and Technical Services</u>				
322 Professional Educational Services – lus	285,845.91	246,377.60		532,223.51
Total Purchased Professional and Technical Services	\$285,845.91	\$246,377.60		\$532,223.51
400 <u>Purchased Property Services</u>				
430 Repairs and Maintenance Services		765.60		765.60
440 Rentals		5,716.26		5,716.26
Total Purchased Property Services		\$6,481.86		\$6,481.86
500 <u>Other Purchased Services</u>				
561 Tuition To Other School Districts Within the State	13,203.63	17,951.48		31,155.11
580 Travel		90.00		90.00
Total Other Purchased Services	\$13,203.63	\$18,041.48		\$31,245.11
600 <u>Supplies</u>				
610 General Supplies	4,927.85	6,581.31		11,509.16
640 Books and Periodicals	128.74	15,057.58		15,186.32
Total Supplies	\$5,056.59	\$21,638.89		\$26,695.48
800 <u>Other Objects</u>				
810 Dues and Fees	195.00	8,685.00		8,880.00
Total Other Objects	\$195.00	\$8,685.00		\$8,880.00
Total 1240 Academic Support	\$767,185.89	\$1,256,698.42	\$245,835.00	\$2,269,719.31

LEA : 117414203 Loyalsock Township SD

Printed 1/7/2020 11:44:15 AM

General Fund (10)

1241 Learning Support – Public	<u>Elementary</u>	<u>Secondary</u>	<u>Federal</u>	<u>Total</u>
100 <u>Personnel Services – Salaries</u>				
100 Personnel Services – Salaries	282,079.96	575,905.97	154,251.00	1,012,236.93
Total Personnel Services – Salaries	\$282,079.96	\$575,905.97	\$154,251.00	\$1,012,236.93
200 <u>Personnel Services – Employee Benefits</u>				
210 Group Insurance – Contracted Provider	64,562.15	131,183.76	40,151.00	235,896.91
220 Social Security Contributions	20,672.77	43,990.14	9,554.00	74,216.91
230 PSERS Retirement Contributions	90,571.23	196,114.44	40,677.00	327,362.67
250 Unemployment Compensation	3,165.15	4,345.17	390.00	7,900.32
260 Workers' Compensation	1,833.50	3,934.11	812.00	6,579.61
Total Personnel Services – Employee Benefits	\$180,804.80	\$379,567.62	\$91,584.00	\$651,956.42
300 <u>Purchased Professional and Technical Services</u>				
322 Professional Educational Services – lus	285,845.91	246,377.60		532,223.51
Total Purchased Professional and Technical Services	\$285,845.91	\$246,377.60		\$532,223.51
400 <u>Purchased Property Services</u>				
430 Repairs and Maintenance Services		765.60		765.60
440 Rentals		4,726.89		4,726.89
Total Purchased Property Services		\$5,492.49		\$5,492.49
500 <u>Other Purchased Services</u>				
561 Tuition To Other School Districts Within the State	13,203.63	17,951.48		31,155.11
580 Travel		90.00		90.00
Total Other Purchased Services	\$13,203.63	\$18,041.48		\$31,245.11
600 <u>Supplies</u>				
610 General Supplies	3,192.86	2,742.88		5,935.74
640 Books and Periodicals	128.74	15,057.58		15,186.32
Total Supplies	\$3,321.60	\$17,800.46		\$21,122.06
Total 1241 Learning Support – Public	\$765,255.90	\$1,243,185.62	\$245,835.00	\$2,254,276.52

LEA : 117414203 Loyalsock Township SD

Printed 1/7/2020 11:44:15 AM

General Fund (10)

1243 Gifted Support

	<u>Elementary</u>	<u>Secondary</u>	<u>Federal</u>	<u>Total</u>
400 <u>Purchased Property Services</u>				
440 Rentals		989.37		989.37
Total Purchased Property Services		\$989.37		\$989.37
600 <u>Supplies</u>				
610 General Supplies	1,734.99	3,838.43		5,573.42
Total Supplies	\$1,734.99	\$3,838.43		\$5,573.42
800 <u>Other Objects</u>				
810 Dues and Fees	195.00	8,685.00		8,880.00
Total Other Objects	\$195.00	\$8,685.00		\$8,880.00
Total 1243 Gifted Support	\$1,929.99	\$13,512.80		\$15,442.79

LEA : 117414203 Loyalsock Township SD

Printed 1/7/2020 11:44:15 AM

General Fund (10)

1260 Physical Support

	<u>Elementary</u>	<u>Secondary</u>	<u>Federal</u>	<u>Total</u>
300 <u>Purchased Professional and Technical Services</u>				
322 Professional Educational Services – lus	9,236.40	9,779.65		19,016.05
Total Purchased Professional and Technical Services	\$9,236.40	\$9,779.65		\$19,016.05
Total 1260 Physical Support	\$9,236.40	\$9,779.65		\$19,016.05

LEA : 117414203 Loyalsock Township SD

Printed 1/7/2020 11:44:15 AM

General Fund (10)				
1270 Multi-Handicapped Support	<u>Elementary</u>	<u>Secondary</u>	<u>Federal</u>	<u>Total</u>
300 <u>Purchased Professional and Technical Services</u>				
322 Professional Educational Services – lus	70,381.40	81,387.00		151,768.40
Total Purchased Professional and Technical Services	\$70,381.40	\$81,387.00		\$151,768.40
Total 1270 Multi-Handicapped Support	\$70,381.40	\$81,387.00		\$151,768.40

LEA : 117414203 Loyalsock Township SD

Printed 1/7/2020 11:44:15 AM

General Fund (10)				
1290 Special Programs - Other Support	<u>Elementary</u>	<u>Secondary</u>	<u>Federal</u>	<u>Total</u>
300 <u>Purchased Professional and Technical Services</u>				
322 Professional Educational Services – Ius	60,234.85	120,432.20		180,667.05
Total Purchased Professional and Technical Services	\$60,234.85	\$120,432.20		\$180,667.05
500 <u>Other Purchased Services</u>				
562 Tuition To Pennsylvania Charter Schools	17,501.61	122,511.27		140,012.88
594 IU Payment By Withholding for Institutionalized Children's Programs – Special Classes		3,996.98		3,996.98
Total Other Purchased Services	\$17,501.61	\$126,508.25		\$144,009.86
Total 1290 Special Programs - Other Support	\$77,736.46	\$246,940.45		\$324,676.91

LEA : 117414203 Loyalsock Township SD

Printed 1/7/2020 11:44:15 AM

General Fund (10)

1300 Vocational Education

500 Other Purchased Services

	<u>Elementary</u>	<u>Secondary</u>	<u>Federal</u>	<u>Total</u>
564 Tuition To Career and Technology Centers		266,046.05		266,046.05
Total Other Purchased Services		\$266,046.05		\$266,046.05
Total 1300 Vocational Education		\$266,046.05		\$266,046.05

LEA : 117414203 Loyalsock Township SD

Printed 1/7/2020 11:44:15 AM

General Fund (10)

1400 Other Instructional Programs – Elementary / Secondary	<u>Elementary</u>	<u>Secondary</u>	<u>Federal</u>	<u>Total</u>
100 <u>Personnel Services – Salaries</u>				
100 Personnel Services – Salaries	6,020.69	6,500.51		12,521.20
Total Personnel Services – Salaries	\$6,020.69	\$6,500.51		\$12,521.20
200 <u>Personnel Services – Employee Benefits</u>				
220 Social Security Contributions	444.71	481.49		926.20
230 PSERS Retirement Contributions	2,012.69	2,173.10		4,185.79
250 Unemployment Compensation	47.40	41.40		88.80
260 Workers' Compensation	39.14	42.27		81.41
Total Personnel Services – Employee Benefits	\$2,543.94	\$2,738.26		\$5,282.20
300 <u>Purchased Professional and Technical Services</u>				
322 Professional Educational Services – Ius	45,144.52	94,722.64		139,867.16
Total Purchased Professional and Technical Services	\$45,144.52	\$94,722.64		\$139,867.16
Total 1400 Other Instructional Programs – Elementary / Secondary	\$53,709.15	\$103,961.41		\$157,670.56

LEA : 117414203 Loyalsock Township SD

Printed 1/7/2020 11:44:15 AM

General Fund (10)

1430 Homebound Instruction	<u>Elementary</u>	<u>Secondary</u>	<u>Federal</u>	<u>Total</u>
100 <u>Personnel Services – Salaries</u>				
100 Personnel Services – Salaries	365.93	6,500.51		6,866.44
Total Personnel Services – Salaries	\$365.93	\$6,500.51		\$6,866.44
200 <u>Personnel Services – Employee Benefits</u>				
220 Social Security Contributions	25.45	481.49		506.94
230 PSERS Retirement Contributions	122.32	2,173.10		2,295.42
250 Unemployment Compensation		41.40		41.40
260 Workers' Compensation	2.38	42.27		44.65
Total Personnel Services – Employee Benefits	\$150.15	\$2,738.26		\$2,888.41
Total 1430 Homebound Instruction	\$516.08	\$9,238.77		\$9,754.85

LEA : 117414203 Loyalsock Township SD

Printed 1/7/2020 11:44:15 AM

General Fund (10)

1440 Alternative Regular Education Programs	<u>Elementary</u>	<u>Secondary</u>	<u>Federal</u>	<u>Total</u>
300 <u>Purchased Professional and Technical Services</u>				
322 Professional Educational Services – lus	45,144.52	94,722.64		139,867.16
Total Purchased Professional and Technical Services	\$45,144.52	\$94,722.64		\$139,867.16
Total 1440 Alternative Regular Education Programs	\$45,144.52	\$94,722.64		\$139,867.16

LEA : 117414203 Loyalsock Township SD

Printed 1/7/2020 11:44:15 AM

General Fund (10)

1442 Alternative Education Programs	<u>Elementary</u>	<u>Secondary</u>	<u>Federal</u>	<u>Total</u>
300 <u>Purchased Professional and Technical Services</u>				
322 Professional Educational Services – lus	45,144.52	94,722.64		139,867.16
Total Purchased Professional and Technical Services	\$45,144.52	\$94,722.64		\$139,867.16
Total 1442 Alternative Education Programs	\$45,144.52	\$94,722.64		\$139,867.16

LEA : 117414203 Loyalsock Township SD

Printed 1/7/2020 11:44:15 AM

General Fund (10)

1450 Instructional Programs Outside the Established School Day	<u>Elementary</u>	<u>Secondary</u>	<u>Federal</u>	<u>Total</u>
100 <u>Personnel Services – Salaries</u>				
100 Personnel Services – Salaries	5,654.76			5,654.76
Total Personnel Services – Salaries	\$5,654.76			\$5,654.76
200 <u>Personnel Services – Employee Benefits</u>				
220 Social Security Contributions	419.26			419.26
230 PSERS Retirement Contributions	1,890.37			1,890.37
250 Unemployment Compensation	47.40			47.40
260 Workers' Compensation	36.76			36.76
Total Personnel Services – Employee Benefits	\$2,393.79			\$2,393.79
Total 1450 Instructional Programs Outside the Established School Day	\$8,048.55			\$8,048.55

LEA : 117414203 Loyalsock Township SD

Printed 1/7/2020 11:44:31 AM

General Fund (10)

2000 Support Services

Total

100	<u>Personnel Services – Salaries</u>	
100	Personnel Services – Salaries	3,015,873.04
Total Personnel Services – Salaries		\$3,015,873.04
200	<u>Personnel Services – Employee Benefits</u>	
210	Group Insurance – Contracted Provider	743,775.04
220	Social Security Contributions	217,840.15
230	PSERS Retirement Contributions	926,580.27
240	Tuition Reimbursement	82,363.00
250	Unemployment Compensation	15,095.40
260	Workers' Compensation	19,585.55
291	Other Retirement Plans	8,094.59
Total Personnel Services – Employee Benefits		\$2,013,334.00
300	<u>Purchased Professional and Technical Services</u>	
310	Official / Administrative Services	88,129.05
330	Other Professional Services	217,896.32
340	Technical Services	34,603.59
Total Purchased Professional and Technical Services		\$340,628.96
400	<u>Purchased Property Services</u>	
410	Cleaning Services	17,503.64
420	Utility Services	46,623.76
430	Repairs and Maintenance Services	98,355.97
440	Rentals	8,736.07
Total Purchased Property Services		\$171,219.44
500	<u>Other Purchased Services</u>	
515	Public Carriers	13,637.56
516	Student Transportation Services From the IU	6,188.90
520	Insurance – General	321.00
522	Automotive Liability Insurance	21,608.00
523	General Property and Liability Insurance	59,834.42
529	Other Insurance	7,959.00
530	Communications	19,300.45
549	Other Advertising/Public Relations	15,533.73
550	Printing and Binding	206.00
580	Travel	32,540.27
Total Other Purchased Services		\$177,129.33
600	<u>Supplies</u>	
610	General Supplies	304,866.95
620	Energy	390,885.98
640	Books and Periodicals	3,346.48
650	Supplies & Fees – Technology Related	105,635.75
Total Supplies		\$804,735.16
700	<u>Property</u>	
752	Capital Equipment – Original and Additional	100,027.90

LEA : 117414203 Loyalsock Township SD

Printed 1/7/2020 11:44:31 AM

General Fund (10)

2000 Support Services

	<u>Total</u>
Total Property	\$100,027.90
800 <u>Other Objects</u>	
810 Dues and Fees	40,073.56
Total Other Objects	\$40,073.56
Total 2000 Support Services	\$6,663,021.39

LEA : 117414203 Loyalsock Township SD

Printed 1/7/2020 11:44:31 AM

General Fund (10)

2100 Support Services – Students	Elementary	Secondary	Federal	Total
100 <u>Personnel Services – Salaries</u>				
100 Personnel Services – Salaries	186,066.30	217,490.56		440,850.86
Total Personnel Services – Salaries	\$186,066.30	\$217,490.56		\$440,850.86
200 <u>Personnel Services – Employee Benefits</u>				
210 Group Insurance – Contracted Provider	24,631.07	54,973.74		97,827.25
220 Social Security Contributions	13,726.19	15,824.73		32,104.41
230 PSERS Retirement Contributions	60,672.32	72,544.11		145,324.68
250 Unemployment Compensation	623.00	795.03		1,618.04
260 Workers' Compensation	1,212.98	1,416.30		2,871.60
Total Personnel Services – Employee Benefits	\$100,865.56	\$145,553.91		\$279,745.98
500 <u>Other Purchased Services</u>				
580 Travel		228.10		228.10
Total Other Purchased Services		\$228.10		\$228.10
600 <u>Supplies</u>				
610 General Supplies	3,314.51	2,410.00		5,724.51
640 Books and Periodicals	9.95			9.95
Total Supplies	\$3,324.46	\$2,410.00		\$5,734.46
800 <u>Other Objects</u>				
810 Dues and Fees		12,930.00		12,930.00
Total Other Objects		\$12,930.00		\$12,930.00
Total 2100 Support Services – Students	\$290,256.32	\$378,612.57		\$739,489.40

LEA : 117414203 Loyalsock Township SD

Printed 1/7/2020 11:44:31 AM

General Fund (10)				
2120 Guidance Services	<u>Elementary</u>	<u>Secondary</u>	<u>Federal</u>	<u>Total</u>
100 <u>Personnel Services – Salaries</u>				
100 Personnel Services – Salaries	152,786.30	186,770.56		339,556.86
Total Personnel Services – Salaries	\$152,786.30	\$186,770.56		\$339,556.86
200 <u>Personnel Services – Employee Benefits</u>				
210 Group Insurance – Contracted Provider	21,353.16	51,947.97		73,301.13
220 Social Security Contributions	11,184.69	13,478.73		24,663.42
230 PSERS Retirement Contributions	49,546.85	62,274.45		111,821.30
250 Unemployment Compensation	415.00	603.03		1,018.03
260 Workers' Compensation	995.25	1,215.32		2,210.57
Total Personnel Services – Employee Benefits	\$83,494.95	\$129,519.50		\$213,014.45
500 <u>Other Purchased Services</u>				
580 Travel		228.10		228.10
Total Other Purchased Services		\$228.10		\$228.10
600 <u>Supplies</u>				
610 General Supplies	3,314.51	2,410.00		5,724.51
640 Books and Periodicals	9.95			9.95
Total Supplies	\$3,324.46	\$2,410.00		\$5,734.46
800 <u>Other Objects</u>				
810 Dues and Fees		12,930.00		12,930.00
Total Other Objects		\$12,930.00		\$12,930.00
Total 2120 Guidance Services	\$239,605.71	\$331,858.16		\$571,463.87

LEA : 117414203 Loyalsock Township SD

Printed 1/7/2020 11:44:31 AM

General Fund (10)

2140 Psychological Services	<u>Elementary</u>	<u>Secondary</u>	<u>Federal</u>	<u>Total</u>
100 <u>Personnel Services – Salaries</u>				
100 Personnel Services – Salaries	33,280.00	30,720.00		64,000.00
Total Personnel Services – Salaries	\$33,280.00	\$30,720.00		\$64,000.00
200 <u>Personnel Services – Employee Benefits</u>				
210 Group Insurance – Contracted Provider	3,277.91	3,025.77		6,303.68
220 Social Security Contributions	2,541.50	2,346.00		4,887.50
230 PSERS Retirement Contributions	11,125.47	10,269.66		21,395.13
250 Unemployment Compensation	208.00	192.00		400.00
260 Workers' Compensation	217.73	200.98		418.71
Total Personnel Services – Employee Benefits	\$17,370.61	\$16,034.41		\$33,405.02
Total 2140 Psychological Services	\$50,650.61	\$46,754.41		\$97,405.02

LEA : 117414203 Loyalsock Township SD

Printed 1/7/2020 11:44:31 AM

General Fund (10)

2170 Student Accounting Services

Elementary Secondary Federal Total

100 <u>Personnel Services – Salaries</u>				
100 Personnel Services – Salaries				37,294.00
Total Personnel Services – Salaries				\$37,294.00
200 <u>Personnel Services – Employee Benefits</u>				
210 Group Insurance – Contracted Provider				18,222.44
220 Social Security Contributions				2,553.49
230 PSERS Retirement Contributions				12,108.25
250 Unemployment Compensation				200.01
260 Workers' Compensation				242.32
Total Personnel Services – Employee Benefits				\$33,326.51
Total 2170 Student Accounting Services				\$70,620.51

LEA : 117414203 Loyalsock Township SD

Printed 1/7/2020 11:44:31 AM

General Fund (10)				
2200 Support Services – Instructional Staff	<u>Elementary</u>	<u>Secondary</u>	<u>Federal</u>	<u>Total</u>
100 <u>Personnel Services – Salaries</u>				
100 Personnel Services – Salaries	151,286.96	141,837.51		293,124.47
Total Personnel Services – Salaries	\$151,286.96	\$141,837.51		\$293,124.47
200 <u>Personnel Services – Employee Benefits</u>				
210 Group Insurance – Contracted Provider	15,541.78	26,394.04		41,935.82
220 Social Security Contributions	11,286.18	10,431.26		21,717.44
230 PSERS Retirement Contributions	49,385.89	45,162.33		94,548.22
240 Tuition Reimbursement	42,030.56	38,797.44		80,828.00
250 Unemployment Compensation	638.15	913.12		1,551.27
260 Workers' Compensation	983.29	921.87		1,905.16
291 Other Retirement Plans		1,073.28		1,073.28
Total Personnel Services – Employee Benefits	\$119,865.85	\$123,693.34		\$243,559.19
300 <u>Purchased Professional and Technical Services</u>				
310 Official / Administrative Services	29,800.61	27,508.26		57,308.87
Total Purchased Professional and Technical Services	\$29,800.61	\$27,508.26		\$57,308.87
500 <u>Other Purchased Services</u>				
580 Travel	11,649.81	10,753.66		22,403.47
Total Other Purchased Services	\$11,649.81	\$10,753.66		\$22,403.47
600 <u>Supplies</u>				
610 General Supplies	18,724.43	20,759.92		39,484.35
640 Books and Periodicals	795.50	1,880.20		2,675.70
650 Supplies & Fees – Technology Related	33,782.66	34,934.63		68,717.29
Total Supplies	\$53,302.59	\$57,574.75		\$110,877.34
700 <u>Property</u>				
752 Capital Equipment – Original and Additional	14,349.23	38,693.05		53,042.28
Total Property	\$14,349.23	\$38,693.05		\$53,042.28
800 <u>Other Objects</u>				
810 Dues and Fees		132.00		132.00
Total Other Objects		\$132.00		\$132.00
Total 2200 Support Services – Instructional Staff	\$380,255.05	\$400,192.57		\$780,447.62

LEA : 117414203 Loyalsock Township SD

Printed 1/7/2020 11:44:31 AM

General Fund (10)

2240 Computer-Assisted Instruction Support Services	<u>Elementary</u>	<u>Secondary</u>	<u>Federal</u>	<u>Total</u>
100 <u>Personnel Services – Salaries</u>				
100 Personnel Services – Salaries	11,672.14	31,577.91		43,250.05
Total Personnel Services – Salaries	\$11,672.14	\$31,577.91		\$43,250.05
200 <u>Personnel Services – Employee Benefits</u>				
210 Group Insurance – Contracted Provider	6,981.67	18,730.19		25,711.86
220 Social Security Contributions	861.10	2,255.91		3,117.01
230 PSERS Retirement Contributions	3,902.01	10,364.83		14,266.84
250 Unemployment Compensation	148.53	454.80		603.33
260 Workers' Compensation	75.92	205.24		281.16
291 Other Retirement Plans		1,073.28		1,073.28
Total Personnel Services – Employee Benefits	\$11,969.23	\$33,084.25		\$45,053.48
300 <u>Purchased Professional and Technical Services</u>				
310 Official / Administrative Services	26,373.46	24,344.73		50,718.19
Total Purchased Professional and Technical Services	\$26,373.46	\$24,344.73		\$50,718.19
500 <u>Other Purchased Services</u>				
580 Travel	1,094.47	1,010.28		2,104.75
Total Other Purchased Services	\$1,094.47	\$1,010.28		\$2,104.75
600 <u>Supplies</u>				
610 General Supplies	11,687.82	13,623.69		25,311.51
650 Supplies & Fees – Technology Related	33,032.66	33,583.18		66,615.84
Total Supplies	\$44,720.48	\$47,206.87		\$91,927.35
700 <u>Property</u>				
752 Capital Equipment – Original and Additional	14,349.23	38,693.05		53,042.28
Total Property	\$14,349.23	\$38,693.05		\$53,042.28
Total 2240 Computer-Assisted Instruction Support Services	\$110,179.01	\$175,917.09		\$286,096.10

LEA : 117414203 Loyalsock Township SD

Printed 1/7/2020 11:44:31 AM

General Fund (10)				
2250 School Library Services	<u>Elementary</u>	<u>Secondary</u>	<u>Federal</u>	<u>Total</u>
100 <u>Personnel Services – Salaries</u>				
100 Personnel Services – Salaries	52,548.62	18,890.54		71,439.16
Total Personnel Services – Salaries	\$52,548.62	\$18,890.54		\$71,439.16
200 <u>Personnel Services – Employee Benefits</u>				
210 Group Insurance – Contracted Provider	403.20	134.40		537.60
220 Social Security Contributions	3,987.40	1,430.65		5,418.05
230 PSERS Retirement Contributions	17,446.63	5,479.44		22,926.07
250 Unemployment Compensation	157.19	50.01		207.20
260 Workers' Compensation	341.50	122.85		464.35
Total Personnel Services – Employee Benefits	\$22,335.92	\$7,217.35		\$29,553.27
600 <u>Supplies</u>				
610 General Supplies	343.74	958.20		1,301.94
640 Books and Periodicals	795.50	1,880.20		2,675.70
650 Supplies & Fees – Technology Related	230.00	871.45		1,101.45
Total Supplies	\$1,369.24	\$3,709.85		\$5,079.09
800 <u>Other Objects</u>				
810 Dues and Fees		132.00		132.00
Total Other Objects		\$132.00		\$132.00
Total 2250 School Library Services	\$76,253.78	\$29,949.74		\$106,203.52

LEA : 117414203 Loyalsock Township SD

Printed 1/7/2020 11:44:31 AM

General Fund (10)

2260 Instruction and Curriculum Development Services	Elementary	Secondary	Federal	Total
100 <u>Personnel Services – Salaries</u>				
100 Personnel Services – Salaries	85,791.20	88,394.06		174,185.26
Total Personnel Services – Salaries	\$85,791.20	\$88,394.06		\$174,185.26
200 <u>Personnel Services – Employee Benefits</u>				
210 Group Insurance – Contracted Provider	8,156.91	7,529.45		15,686.36
220 Social Security Contributions	6,345.66	6,523.50		12,869.16
230 PSERS Retirement Contributions	27,611.01	28,323.50		55,934.51
250 Unemployment Compensation	319.68	378.56		698.24
260 Workers' Compensation	557.59	574.46		1,132.05
Total Personnel Services – Employee Benefits	\$42,990.85	\$43,329.47		\$86,320.32
300 <u>Purchased Professional and Technical Services</u>				
310 Official / Administrative Services	3,427.15	3,163.53		6,590.68
Total Purchased Professional and Technical Services	\$3,427.15	\$3,163.53		\$6,590.68
500 <u>Other Purchased Services</u>				
580 Travel	873.14	805.97		1,679.11
Total Other Purchased Services	\$873.14	\$805.97		\$1,679.11
600 <u>Supplies</u>				
610 General Supplies	6,669.56	6,156.52		12,826.08
650 Supplies & Fees – Technology Related	520.00	480.00		1,000.00
Total Supplies	\$7,189.56	\$6,636.52		\$13,826.08
Total 2260 Instruction and Curriculum Development Services	\$140,271.90	\$142,329.55		\$282,601.45

LEA : 117414203 Loyalsock Township SD

Printed 1/7/2020 11:44:31 AM

General Fund (10)

2270 Instructional Staff Professional Development Services	Elementary	Secondary	Federal	Total
100 <u>Personnel Services – Salaries</u>				
100 Personnel Services – Salaries	1,275.00	2,975.00		4,250.00
Total Personnel Services – Salaries	\$1,275.00	\$2,975.00		\$4,250.00
200 <u>Personnel Services – Employee Benefits</u>				
220 Social Security Contributions	92.02	221.20		313.22
230 PSERS Retirement Contributions	426.24	994.56		1,420.80
240 Tuition Reimbursement	42,030.56	38,797.44		80,828.00
250 Unemployment Compensation	12.75	29.75		42.50
260 Workers' Compensation	8.28	19.32		27.60
Total Personnel Services – Employee Benefits	\$42,569.85	\$40,062.27		\$82,632.12
500 <u>Other Purchased Services</u>				
580 Travel	9,682.20	8,937.41		18,619.61
Total Other Purchased Services	\$9,682.20	\$8,937.41		\$18,619.61
600 <u>Supplies</u>				
610 General Supplies	23.31	21.51		44.82
Total Supplies	\$23.31	\$21.51		\$44.82
Total 2270 Instructional Staff Professional Development Services	\$53,550.36	\$51,996.19		\$105,546.55

LEA : 117414203 Loyalsock Township SD

Printed 1/7/2020 11:44:31 AM

General Fund (10)				
2300 Support Services – Administration	<u>Elementary</u>	<u>Secondary</u>	<u>Federal</u>	<u>Total</u>
100 <u>Personnel Services – Salaries</u>				
100 Personnel Services – Salaries	237,988.14	530,429.96		969,749.50
Total Personnel Services – Salaries	\$237,988.14	\$530,429.96		\$969,749.50
200 <u>Personnel Services – Employee Benefits</u>				
210 Group Insurance – Contracted Provider	70,255.43	149,120.86		251,567.26
220 Social Security Contributions	17,249.98	38,002.48		69,327.53
230 PSERS Retirement Contributions	76,118.27	172,006.07		313,492.95
250 Unemployment Compensation	840.25	2,009.71		3,249.95
260 Workers' Compensation	1,546.90	3,447.96		6,303.41
291 Other Retirement Plans				6,214.18
Total Personnel Services – Employee Benefits	\$166,010.83	\$364,587.08		\$650,155.28
300 <u>Purchased Professional and Technical Services</u>				
310 Official / Administrative Services		379.00		498.98
330 Other Professional Services				208,596.32
Total Purchased Professional and Technical Services		\$379.00		\$209,095.30
400 <u>Purchased Property Services</u>				
430 Repairs and Maintenance Services				3,434.40
440 Rentals	657.00			707.00
Total Purchased Property Services	\$657.00			\$4,141.40
500 <u>Other Purchased Services</u>				
520 Insurance – General				321.00
530 Communications	570.58	791.52		1,362.10
549 Other Advertising/Public Relations				15,533.73
550 Printing and Binding	206.00			206.00
580 Travel	2,530.50	3,942.60		8,343.73
Total Other Purchased Services	\$3,307.08	\$4,734.12		\$25,766.56
600 <u>Supplies</u>				
610 General Supplies	15,207.61	35,769.60		56,395.62
640 Books and Periodicals		556.49		660.83
650 Supplies & Fees – Technology Related	15,836.00	4,294.96		20,130.96
Total Supplies	\$31,043.61	\$40,621.05		\$77,187.41
800 <u>Other Objects</u>				
810 Dues and Fees	969.66	2,532.30		24,323.15
Total Other Objects	\$969.66	\$2,532.30		\$24,323.15
Total 2300 Support Services – Administration	\$439,976.32	\$943,283.51		\$1,960,418.60

LEA : 117414203 Loyalsock Township SD

Printed 1/7/2020 11:44:31 AM

General Fund (10)				
2310 Board Services	<u>Elementary</u>	<u>Secondary</u>	<u>Federal</u>	<u>Total</u>
300 <u>Purchased Professional and Technical Services</u>				
330 Other Professional Services				24,484.00
Total Purchased Professional and Technical Services				\$24,484.00
500 <u>Other Purchased Services</u>				
520 Insurance – General				321.00
549 Other Advertising/Public Relations				15,533.73
Total Other Purchased Services				\$15,854.73
600 <u>Supplies</u>				
610 General Supplies				2,491.41
Total Supplies				\$2,491.41
800 <u>Other Objects</u>				
810 Dues and Fees				12,697.12
Total Other Objects				\$12,697.12
Total 2310 Board Services				\$55,527.26

LEA : 117414203 Loyalsock Township SD

Printed 1/7/2020 11:44:31 AM

General Fund (10)

2330 Tax Assessment and Collection Services	<u>Elementary</u>	<u>Secondary</u>	<u>Federal</u>	<u>Total</u>
300 <u>Purchased Professional and Technical Services</u>				
330 Other Professional Services				145,476.84
Total Purchased Professional and Technical Services				\$145,476.84
Total 2330 Tax Assessment and Collection Services				\$145,476.84

LEA : 117414203 Loyalsock Township SD

Printed 1/7/2020 11:44:31 AM

General Fund (10)

2350 Legal and Accounting Services	<u>Elementary</u>	<u>Secondary</u>	<u>Federal</u>	<u>Total</u>
300 <u>Purchased Professional and Technical Services</u>				
330 Other Professional Services				29,100.98
Total Purchased Professional and Technical Services				\$29,100.98
Total 2350 Legal and Accounting Services				\$29,100.98

LEA : 117414203 Loyalsock Township SD

Printed 1/7/2020 11:44:31 AM

General Fund (10)				
2360 Office of the Superintendent / Executive Director Services	<u>Elementary</u>	<u>Secondary</u>	<u>Federal</u>	<u>Total</u>
100 <u>Personnel Services – Salaries</u>				
100 Personnel Services – Salaries				201,331.40
Total Personnel Services – Salaries				\$201,331.40
200 <u>Personnel Services – Employee Benefits</u>				
210 Group Insurance – Contracted Provider				32,190.97
220 Social Security Contributions				14,075.07
230 PSERS Retirement Contributions				65,368.61
250 Unemployment Compensation				399.99
260 Workers' Compensation				1,308.55
291 Other Retirement Plans				6,214.18
Total Personnel Services – Employee Benefits				\$119,557.37
300 <u>Purchased Professional and Technical Services</u>				
310 Official / Administrative Services				119.98
Total Purchased Professional and Technical Services				\$119.98
400 <u>Purchased Property Services</u>				
430 Repairs and Maintenance Services				3,434.40
440 Rentals				50.00
Total Purchased Property Services				\$3,484.40
500 <u>Other Purchased Services</u>				
530 Communications	405.60	374.40		780.00
580 Travel				1,870.63
Total Other Purchased Services	\$405.60	\$374.40		\$2,650.63
600 <u>Supplies</u>				
610 General Supplies				2,927.00
640 Books and Periodicals				104.34
Total Supplies				\$3,031.34
800 <u>Other Objects</u>				
810 Dues and Fees				4,845.04
Total Other Objects				\$4,845.04
Total 2360 Office of the Superintendent / Executive Director Services	\$405.60	\$374.40		\$335,020.16

LEA : 117414203 Loyalsock Township SD

Printed 1/7/2020 11:44:31 AM

General Fund (10)				
2380 Office of the Principal Services	<u>Elementary</u>	<u>Secondary</u>	<u>Federal</u>	<u>Total</u>
100 <u>Personnel Services – Salaries</u>				
100 Personnel Services – Salaries	237,988.14	530,429.96		768,418.10
Total Personnel Services – Salaries	\$237,988.14	\$530,429.96		\$768,418.10
200 <u>Personnel Services – Employee Benefits</u>				
210 Group Insurance – Contracted Provider	70,255.43	149,120.86		219,376.29
220 Social Security Contributions	17,249.98	38,002.48		55,252.46
230 PSERS Retirement Contributions	76,118.27	172,006.07		248,124.34
250 Unemployment Compensation	840.25	2,009.71		2,849.96
260 Workers' Compensation	1,546.90	3,447.96		4,994.86
Total Personnel Services – Employee Benefits	\$166,010.83	\$364,587.08		\$530,597.91
300 <u>Purchased Professional and Technical Services</u>				
310 Official / Administrative Services		379.00		379.00
Total Purchased Professional and Technical Services		\$379.00		\$379.00
400 <u>Purchased Property Services</u>				
440 Rentals	657.00			657.00
Total Purchased Property Services	\$657.00			\$657.00
500 <u>Other Purchased Services</u>				
530 Communications	164.98	417.12		582.10
550 Printing and Binding	206.00			206.00
580 Travel	2,530.50	3,942.60		6,473.10
Total Other Purchased Services	\$2,901.48	\$4,359.72		\$7,261.20
600 <u>Supplies</u>				
610 General Supplies	15,207.61	35,769.60		50,977.21
640 Books and Periodicals		556.49		556.49
650 Supplies & Fees – Technology Related	15,836.00	4,294.96		20,130.96
Total Supplies	\$31,043.61	\$40,621.05		\$71,664.66
800 <u>Other Objects</u>				
810 Dues and Fees	969.66	2,532.30		3,501.96
Total Other Objects	\$969.66	\$2,532.30		\$3,501.96
Total 2380 Office of the Principal Services	\$439,570.72	\$942,909.11		\$1,382,479.83

LEA : 117414203 Loyalsock Township SD

Printed 1/7/2020 11:44:31 AM

General Fund (10)

2390 Other Administration Services	<u>Elementary</u>	<u>Secondary</u>	<u>Federal</u>	<u>Total</u>
300 <u>Purchased Professional and Technical Services</u>				
330 Other Professional Services				9,534.50
Total Purchased Professional and Technical Services				\$9,534.50
800 <u>Other Objects</u>				
810 Dues and Fees				3,279.03
Total Other Objects				\$3,279.03
Total 2390 Other Administration Services				\$12,813.53

LEA : 117414203 Loyalsock Township SD

Printed 1/7/2020 11:44:31 AM

General Fund (10)				
2400 Support Services – Pupil Health	<u>Elementary</u>	<u>Secondary</u>	<u>Federal</u>	<u>Total</u>
100 <u>Personnel Services – Salaries</u>				
100 Personnel Services – Salaries				154,891.47
Total Personnel Services – Salaries				\$154,891.47
200 <u>Personnel Services – Employee Benefits</u>				
210 Group Insurance – Contracted Provider				41,829.01
220 Social Security Contributions				10,687.27
230 PSERS Retirement Contributions				50,104.22
250 Unemployment Compensation				706.93
260 Workers' Compensation				1,006.77
Total Personnel Services – Employee Benefits				\$104,334.20
300 <u>Purchased Professional and Technical Services</u>				
330 Other Professional Services				9,300.00
Total Purchased Professional and Technical Services				\$9,300.00
500 <u>Other Purchased Services</u>				
580 Travel				180.26
Total Other Purchased Services				\$180.26
600 <u>Supplies</u>				
610 General Supplies				2,549.24
Total Supplies				\$2,549.24
Total 2400 Support Services – Pupil Health				\$271,255.17

LEA : 117414203 Loyalsock Township SD

Printed 1/7/2020 11:44:31 AM

General Fund (10)				
2440 Nursing Services	<u>Elementary</u>	<u>Secondary</u>	<u>Federal</u>	<u>Total</u>
100 <u>Personnel Services – Salaries</u>				
100 Personnel Services – Salaries				154,891.47
Total Personnel Services – Salaries				\$154,891.47
200 <u>Personnel Services – Employee Benefits</u>				
210 Group Insurance – Contracted Provider				41,829.01
220 Social Security Contributions				10,687.27
230 PSERS Retirement Contributions				50,104.22
250 Unemployment Compensation				706.93
260 Workers' Compensation				1,006.77
Total Personnel Services – Employee Benefits				\$104,334.20
300 <u>Purchased Professional and Technical Services</u>				
330 Other Professional Services				9,300.00
Total Purchased Professional and Technical Services				\$9,300.00
500 <u>Other Purchased Services</u>				
580 Travel				180.26
Total Other Purchased Services				\$180.26
600 <u>Supplies</u>				
610 General Supplies				2,549.24
Total Supplies				\$2,549.24
Total 2440 Nursing Services				\$271,255.17

LEA : 117414203 Loyalsock Township SD

Printed 1/7/2020 11:44:31 AM

General Fund (10)

2500 Support Services – Business	<u>Elementary</u>	<u>Secondary</u>	<u>Federal</u>	<u>Total</u>
100 <u>Personnel Services – Salaries</u>				
100 Personnel Services – Salaries				219,873.83
Total Personnel Services – Salaries				\$219,873.83
200 <u>Personnel Services – Employee Benefits</u>				
210 Group Insurance – Contracted Provider				61,505.84
220 Social Security Contributions				15,442.96
230 PSERS Retirement Contributions				70,450.09
250 Unemployment Compensation				970.70
260 Workers' Compensation				1,403.51
291 Other Retirement Plans				807.13
Total Personnel Services – Employee Benefits				\$150,580.23
300 <u>Purchased Professional and Technical Services</u>				
310 Official / Administrative Services				30,321.20
Total Purchased Professional and Technical Services				\$30,321.20
400 <u>Purchased Property Services</u>				
430 Repairs and Maintenance Services				3,726.40
Total Purchased Property Services				\$3,726.40
500 <u>Other Purchased Services</u>				
530 Communications				780.00
580 Travel				859.71
Total Other Purchased Services				\$1,639.71
600 <u>Supplies</u>				
610 General Supplies				8,981.29
650 Supplies & Fees – Technology Related				1,620.00
Total Supplies				\$10,601.29
800 <u>Other Objects</u>				
810 Dues and Fees				1,243.41
Total Other Objects				\$1,243.41
Total 2500 Support Services – Business				\$417,986.07

LEA : 117414203 Loyalsock Township SD

Printed 1/7/2020 11:44:31 AM

General Fund (10)				
2510 Fiscal Services	<u>Elementary</u>	<u>Secondary</u>	<u>Federal</u>	<u>Total</u>
100 <u>Personnel Services – Salaries</u>				
100 Personnel Services – Salaries				219,873.83
Total Personnel Services – Salaries				\$219,873.83
200 <u>Personnel Services – Employee Benefits</u>				
210 Group Insurance – Contracted Provider				61,505.84
220 Social Security Contributions				15,442.96
230 PSERS Retirement Contributions				70,450.09
250 Unemployment Compensation				970.70
260 Workers' Compensation				1,403.51
291 Other Retirement Plans				807.13
Total Personnel Services – Employee Benefits				\$150,580.23
300 <u>Purchased Professional and Technical Services</u>				
310 Official / Administrative Services				30,321.20
Total Purchased Professional and Technical Services				\$30,321.20
400 <u>Purchased Property Services</u>				
430 Repairs and Maintenance Services				3,726.40
Total Purchased Property Services				\$3,726.40
500 <u>Other Purchased Services</u>				
530 Communications				780.00
580 Travel				859.71
Total Other Purchased Services				\$1,639.71
600 <u>Supplies</u>				
610 General Supplies				8,981.29
650 Supplies & Fees – Technology Related				1,620.00
Total Supplies				\$10,601.29
800 <u>Other Objects</u>				
810 Dues and Fees				1,243.41
Total Other Objects				\$1,243.41
Total 2510 Fiscal Services				\$417,986.07

LEA : 117414203 Loyalsock Township SD

Printed 1/7/2020 11:44:31 AM

General Fund (10)				
2511 Supervision of Fiscal Services - Head of Component	<u>Elementary</u>	<u>Secondary</u>	<u>Federal</u>	<u>Total</u>
100 <u>Personnel Services – Salaries</u>				
100 Personnel Services – Salaries				89,673.57
Total Personnel Services – Salaries				\$89,673.57
200 <u>Personnel Services – Employee Benefits</u>				
210 Group Insurance – Contracted Provider				20,457.19
220 Social Security Contributions				6,194.06
230 PSERS Retirement Contributions				28,655.82
250 Unemployment Compensation				200.00
260 Workers' Compensation				557.19
291 Other Retirement Plans				807.13
Total Personnel Services – Employee Benefits				\$56,871.39
300 <u>Purchased Professional and Technical Services</u>				
310 Official / Administrative Services				30,321.20
Total Purchased Professional and Technical Services				\$30,321.20
400 <u>Purchased Property Services</u>				
430 Repairs and Maintenance Services				3,726.40
Total Purchased Property Services				\$3,726.40
500 <u>Other Purchased Services</u>				
530 Communications				780.00
580 Travel				859.71
Total Other Purchased Services				\$1,639.71
600 <u>Supplies</u>				
610 General Supplies				8,981.29
650 Supplies & Fees – Technology Related				1,620.00
Total Supplies				\$10,601.29
800 <u>Other Objects</u>				
810 Dues and Fees				1,243.41
Total Other Objects				\$1,243.41
Total 2511 Supervision of Fiscal Services - Head of Component				\$194,076.97

LEA : 117414203 Loyalsock Township SD

Printed 1/7/2020 11:44:31 AM

General Fund (10)

2513 Receiving and Disbursing Funds Services

Elementary Secondary Federal Total

100 <u>Personnel Services – Salaries</u>				
100 Personnel Services – Salaries				33,723.00
Total Personnel Services – Salaries				\$33,723.00
200 <u>Personnel Services – Employee Benefits</u>				
210 Group Insurance – Contracted Provider				19,866.34
220 Social Security Contributions				2,037.76
230 PSERS Retirement Contributions				11,047.91
250 Unemployment Compensation				199.99
260 Workers' Compensation				219.15
Total Personnel Services – Employee Benefits				\$33,371.15
Total 2513 Receiving and Disbursing Funds Services				\$67,094.15

LEA : 117414203 Loyalsock Township SD

Printed 1/7/2020 11:44:31 AM

General Fund (10)

2514 Payroll Services

	<u>Elementary</u>	<u>Secondary</u>	<u>Federal</u>	<u>Total</u>
100 <u>Personnel Services – Salaries</u>				
100 Personnel Services – Salaries				40,900.00
Total Personnel Services – Salaries				\$40,900.00
200 <u>Personnel Services – Employee Benefits</u>				
210 Group Insurance – Contracted Provider				20,934.70
220 Social Security Contributions				2,958.26
230 PSERS Retirement Contributions				13,572.52
250 Unemployment Compensation				200.00
260 Workers' Compensation				265.85
Total Personnel Services – Employee Benefits				\$37,931.33
Total 2514 Payroll Services				\$78,831.33

LEA : 117414203 Loyalsock Township SD

Printed 1/7/2020 11:44:31 AM

General Fund (10)

2515 Financial Accounting Services	<u>Elementary</u>	<u>Secondary</u>	<u>Federal</u>	<u>Total</u>
100 <u>Personnel Services – Salaries</u>				
100 Personnel Services – Salaries				41,070.00
Total Personnel Services – Salaries				\$41,070.00
200 <u>Personnel Services – Employee Benefits</u>				
210 Group Insurance – Contracted Provider				176.60
220 Social Security Contributions				3,143.28
230 PSERS Retirement Contributions				12,893.85
250 Unemployment Compensation				200.00
260 Workers' Compensation				266.91
Total Personnel Services – Employee Benefits				\$16,680.64
Total 2515 Financial Accounting Services				\$57,750.64

LEA : 117414203 Loyalsock Township SD

Printed 1/7/2020 11:44:31 AM

General Fund (10)

2519 Other Fiscal Services

Elementary Secondary Federal Total

100 <u>Personnel Services – Salaries</u>				
100 Personnel Services – Salaries				14,507.26
Total Personnel Services – Salaries				\$14,507.26
200 <u>Personnel Services – Employee Benefits</u>				
210 Group Insurance – Contracted Provider				71.01
220 Social Security Contributions				1,109.60
230 PSERS Retirement Contributions				4,279.99
250 Unemployment Compensation				170.71
260 Workers' Compensation				94.41
Total Personnel Services – Employee Benefits				\$5,725.72
Total 2519 Other Fiscal Services				\$20,232.98

LEA : 117414203 Loyalsock Township SD

Printed 1/7/2020 11:44:31 AM

General Fund (10)

2600 Operation and Maintenance of Plant Services	<u>Elementary</u>	<u>Secondary</u>	<u>Federal</u>	<u>Total</u>
100 <u>Personnel Services – Salaries</u>				
100 Personnel Services – Salaries				576,606.25
Total Personnel Services – Salaries				\$576,606.25
200 <u>Personnel Services – Employee Benefits</u>				
210 Group Insurance – Contracted Provider				185,031.17
220 Social Security Contributions				41,988.72
230 PSERS Retirement Contributions				153,083.23
250 Unemployment Compensation				4,085.79
260 Workers' Compensation				3,750.28
Total Personnel Services – Employee Benefits				\$387,939.19
300 <u>Purchased Professional and Technical Services</u>				
340 Technical Services				33,237.59
Total Purchased Professional and Technical Services				\$33,237.59
400 <u>Purchased Property Services</u>				
410 Cleaning Services				17,503.64
420 Utility Services				46,623.76
430 Repairs and Maintenance Services				74,670.90
440 Rentals				8,029.07
Total Purchased Property Services				\$146,827.37
500 <u>Other Purchased Services</u>				
522 Automotive Liability Insurance				7,890.00
523 General Property and Liability Insurance				59,834.42
529 Other Insurance				7,959.00
530 Communications				17,158.35
Total Other Purchased Services				\$92,841.77
600 <u>Supplies</u>				
610 General Supplies	58,149.12	104,893.63		163,042.75
620 Energy				340,134.45
650 Supplies & Fees – Technology Related				15,167.50
Total Supplies	\$58,149.12	\$104,893.63		\$518,344.70
700 <u>Property</u>				
752 Capital Equipment – Original and Additional				46,985.62
Total Property				\$46,985.62
800 <u>Other Objects</u>				
810 Dues and Fees				797.00
Total Other Objects				\$797.00
Total 2600 Operation and Maintenance of Plant Services	\$58,149.12	\$104,893.63		\$1,803,579.49

LEA : 117414203 Loyalsock Township SD

Printed 1/7/2020 11:44:31 AM

General Fund (10)				
2610 Supervision of Operation and Maintenance of Plant Services	<u>Elementary</u>	<u>Secondary</u>	<u>Federal</u>	<u>Total</u>
100 <u>Personnel Services – Salaries</u>				
100 Personnel Services – Salaries				70,167.08
Total Personnel Services – Salaries				\$70,167.08
200 <u>Personnel Services – Employee Benefits</u>				
210 Group Insurance – Contracted Provider				22,979.32
220 Social Security Contributions				5,077.53
230 PSERS Retirement Contributions				22,834.62
250 Unemployment Compensation				200.01
260 Workers' Compensation				456.04
Total Personnel Services – Employee Benefits				\$51,547.52
300 <u>Purchased Professional and Technical Services</u>				
340 Technical Services				33,237.59
Total Purchased Professional and Technical Services				\$33,237.59
400 <u>Purchased Property Services</u>				
410 Cleaning Services				17,503.64
420 Utility Services				46,623.76
430 Repairs and Maintenance Services				74,670.90
440 Rentals				8,029.07
Total Purchased Property Services				\$146,827.37
500 <u>Other Purchased Services</u>				
522 Automotive Liability Insurance				7,890.00
523 General Property and Liability Insurance				59,834.42
529 Other Insurance				7,959.00
530 Communications				17,158.35
Total Other Purchased Services				\$92,841.77
600 <u>Supplies</u>				
610 General Supplies	56,116.65	103,017.50		159,134.15
620 Energy				340,134.45
Total Supplies	\$56,116.65	\$103,017.50		\$499,268.60
700 <u>Property</u>				
752 Capital Equipment – Original and Additional				46,985.62
Total Property				\$46,985.62
800 <u>Other Objects</u>				
810 Dues and Fees				797.00
Total Other Objects				\$797.00
Total 2610 Supervision of Operation and Maintenance of Plant Services	\$56,116.65	\$103,017.50		\$941,672.55

LEA : 117414203 Loyalsock Township SD

Printed 1/7/2020 11:44:31 AM

General Fund (10)				
2611 Supervision of Operation and Maintenance of Plant Services – Head of Component	<u>Elementary</u>	<u>Secondary</u>	<u>Federal</u>	<u>Total</u>
100 <u>Personnel Services – Salaries</u>				
100 Personnel Services – Salaries				70,167.08
Total Personnel Services – Salaries				\$70,167.08
200 <u>Personnel Services – Employee Benefits</u>				
210 Group Insurance – Contracted Provider				22,979.32
220 Social Security Contributions				5,077.53
230 PSERS Retirement Contributions				22,834.62
250 Unemployment Compensation				200.01
260 Workers' Compensation				456.04
Total Personnel Services – Employee Benefits				\$51,547.52
300 <u>Purchased Professional and Technical Services</u>				
340 Technical Services				33,237.59
Total Purchased Professional and Technical Services				\$33,237.59
400 <u>Purchased Property Services</u>				
410 Cleaning Services				17,503.64
420 Utility Services				46,623.76
430 Repairs and Maintenance Services				74,670.90
440 Rentals				8,029.07
Total Purchased Property Services				\$146,827.37
500 <u>Other Purchased Services</u>				
522 Automotive Liability Insurance				7,890.00
523 General Property and Liability Insurance				59,834.42
529 Other Insurance				7,959.00
530 Communications				17,158.35
Total Other Purchased Services				\$92,841.77
600 <u>Supplies</u>				
610 General Supplies	56,116.65	103,017.50		159,134.15
620 Energy				340,134.45
Total Supplies				\$499,268.60
700 <u>Property</u>				
752 Capital Equipment – Original and Additional				46,985.62
Total Property				\$46,985.62
800 <u>Other Objects</u>				
810 Dues and Fees				797.00
Total Other Objects				\$797.00
Total 2611 Supervision of Operation and Maintenance of Plant Services – Head of Component	\$56,116.65	\$103,017.50		\$941,672.55

LEA : 117414203 Loyalsock Township SD

Printed 1/7/2020 11:44:31 AM

General Fund (10)

2620 Operation of Buildings Services	<u>Elementary</u>	<u>Secondary</u>	<u>Federal</u>	<u>Total</u>
100 <u>Personnel Services – Salaries</u>				
100 Personnel Services – Salaries				289,494.63
Total Personnel Services – Salaries				\$289,494.63
200 <u>Personnel Services – Employee Benefits</u>				
210 Group Insurance – Contracted Provider				109,701.49
220 Social Security Contributions				20,990.43
230 PSERS Retirement Contributions				93,467.25
250 Unemployment Compensation				2,490.55
260 Workers' Compensation				1,884.25
Total Personnel Services – Employee Benefits				\$228,533.97
Total 2620 Operation of Buildings Services				\$518,028.60

LEA : 117414203 Loyalsock Township SD

Printed 1/7/2020 11:44:31 AM

General Fund (10)

2630 Care and Upkeep of Grounds Services	<u>Elementary</u>	<u>Secondary</u>	<u>Federal</u>	<u>Total</u>
100 <u>Personnel Services – Salaries</u>				
100 Personnel Services – Salaries				34,193.66
Total Personnel Services – Salaries				\$34,193.66
200 <u>Personnel Services – Employee Benefits</u>				
210 Group Insurance – Contracted Provider				19,844.92
220 Social Security Contributions				2,391.89
230 PSERS Retirement Contributions				11,415.87
250 Unemployment Compensation				200.03
260 Workers' Compensation				222.25
Total Personnel Services – Employee Benefits				\$34,074.96
Total 2630 Care and Upkeep of Grounds Services				\$68,268.62

LEA : 117414203 Loyalsock Township SD

Printed 1/7/2020 11:44:31 AM

General Fund (10)

2640 Care and Upkeep of Equipment Services	<u>Elementary</u>	<u>Secondary</u>	<u>Federal</u>	<u>Total</u>
100 <u>Personnel Services – Salaries</u>				
100 Personnel Services – Salaries				75,982.88
Total Personnel Services – Salaries				\$75,982.88
200 <u>Personnel Services – Employee Benefits</u>				
210 Group Insurance – Contracted Provider				32,505.44
220 Social Security Contributions				5,361.17
230 PSERS Retirement Contributions				25,365.49
250 Unemployment Compensation				400.00
260 Workers' Compensation				493.75
Total Personnel Services – Employee Benefits				\$64,125.85
Total 2640 Care and Upkeep of Equipment Services				\$140,108.73

LEA : 117414203 Loyalsock Township SD

Printed 1/7/2020 11:44:31 AM

General Fund (10)

2660 Safety and Security Services	<u>Elementary</u>	<u>Secondary</u>	<u>Federal</u>	<u>Total</u>
100 <u>Personnel Services – Salaries</u>				
100 Personnel Services – Salaries				106,768.00
Total Personnel Services – Salaries				\$106,768.00
200 <u>Personnel Services – Employee Benefits</u>				
220 Social Security Contributions				8,167.70
250 Unemployment Compensation				795.20
260 Workers’ Compensation				693.99
Total Personnel Services – Employee Benefits				\$9,656.89
600 <u>Supplies</u>				
610 General Supplies	2,032.47	1,876.13		3,908.60
650 Supplies & Fees – Technology Related				15,167.50
Total Supplies	\$2,032.47	\$1,876.13		\$19,076.10
Total 2660 Safety and Security Services	\$2,032.47	\$1,876.13		\$135,500.99

LEA : 117414203 Loyalsock Township SD

Printed 1/7/2020 11:44:31 AM

General Fund (10)

2700 Student Transportation Services	<u>Elementary</u>	<u>Secondary</u>	<u>Federal</u>	<u>Total</u>
100 <u>Personnel Services – Salaries</u>				
100 Personnel Services – Salaries				221,151.62
Total Personnel Services – Salaries				\$221,151.62
200 <u>Personnel Services – Employee Benefits</u>				
210 Group Insurance – Contracted Provider				21,915.00
220 Social Security Contributions				16,608.66
230 PSERS Retirement Contributions				53,378.67
250 Unemployment Compensation				2,512.73
260 Workers' Compensation				1,437.45
Total Personnel Services – Employee Benefits				\$95,852.51
300 <u>Purchased Professional and Technical Services</u>				
340 Technical Services				1,366.00
Total Purchased Professional and Technical Services				\$1,366.00
400 <u>Purchased Property Services</u>				
430 Repairs and Maintenance Services				16,524.27
Total Purchased Property Services				\$16,524.27
500 <u>Other Purchased Services</u>				
515 Public Carriers				13,637.56
516 Student Transportation Services From the IU				6,188.90
522 Automotive Liability Insurance				13,718.00
580 Travel				525.00
Total Other Purchased Services				\$34,069.46
600 <u>Supplies</u>				
610 General Supplies				27,758.35
620 Energy				50,751.53
Total Supplies				\$78,509.88
800 <u>Other Objects</u>				
810 Dues and Fees				648.00
Total Other Objects				\$648.00
Total 2700 Student Transportation Services				\$448,121.74

LEA : 117414203 Loyalsock Township SD

Printed 1/7/2020 11:44:31 AM

General Fund (10)

2710 Supervision of Student Transportation Services	<u>Elementary</u>	<u>Secondary</u>	<u>Federal</u>	<u>Total</u>
100 <u>Personnel Services – Salaries</u>				
100 Personnel Services – Salaries				72,512.23
Total Personnel Services – Salaries				\$72,512.23
200 <u>Personnel Services – Employee Benefits</u>				
210 Group Insurance – Contracted Provider				21,915.00
220 Social Security Contributions				5,282.06
230 PSERS Retirement Contributions				23,564.78
250 Unemployment Compensation				199.99
260 Workers' Compensation				471.27
Total Personnel Services – Employee Benefits				\$51,433.10
300 <u>Purchased Professional and Technical Services</u>				
340 Technical Services				1,366.00
Total Purchased Professional and Technical Services				\$1,366.00
400 <u>Purchased Property Services</u>				
430 Repairs and Maintenance Services				14,984.27
Total Purchased Property Services				\$14,984.27
500 <u>Other Purchased Services</u>				
515 Public Carriers				13,637.56
516 Student Transportation Services From the IU				6,188.90
522 Automotive Liability Insurance				13,718.00
580 Travel				525.00
Total Other Purchased Services				\$34,069.46
600 <u>Supplies</u>				
610 General Supplies				27,758.35
620 Energy				50,751.53
Total Supplies				\$78,509.88
800 <u>Other Objects</u>				
810 Dues and Fees				648.00
Total Other Objects				\$648.00
Total 2710 Supervision of Student Transportation Services				\$253,522.94

LEA : 117414203 Loyalsock Township SD

Printed 1/7/2020 11:44:31 AM

General Fund (10)

2711 Supervision of Student Transportation Services – Head of Component

Elementary Secondary Federal Total

100 <u>Personnel Services – Salaries</u>				
100 Personnel Services – Salaries				72,512.23
Total Personnel Services – Salaries				\$72,512.23
200 <u>Personnel Services – Employee Benefits</u>				
210 Group Insurance – Contracted Provider				21,915.00
220 Social Security Contributions				5,282.06
230 PSERS Retirement Contributions				23,564.78
250 Unemployment Compensation				199.99
260 Workers' Compensation				471.27
Total Personnel Services – Employee Benefits				\$51,433.10
300 <u>Purchased Professional and Technical Services</u>				
340 Technical Services				1,366.00
Total Purchased Professional and Technical Services				\$1,366.00
400 <u>Purchased Property Services</u>				
430 Repairs and Maintenance Services				14,984.27
Total Purchased Property Services				\$14,984.27
500 <u>Other Purchased Services</u>				
515 Public Carriers				13,637.56
516 Student Transportation Services From the IU				6,188.90
522 Automotive Liability Insurance				13,718.00
580 Travel				525.00
Total Other Purchased Services				\$34,069.46
600 <u>Supplies</u>				
610 General Supplies				27,758.35
620 Energy				50,751.53
Total Supplies				\$78,509.88
800 <u>Other Objects</u>				
810 Dues and Fees				648.00
Total Other Objects				\$648.00
Total 2711 Supervision of Student Transportation Services – Head of Component				\$253,522.94

LEA : 117414203 Loyalsock Township SD

Printed 1/7/2020 11:44:31 AM

General Fund (10)					
2720 Vehicle Operation Services		<u>Elementary</u>	<u>Secondary</u>	<u>Federal</u>	<u>Total</u>
100 <u>Personnel Services – Salaries</u>					
100 Personnel Services – Salaries					148,639.39
Total Personnel Services – Salaries					\$148,639.39
200 <u>Personnel Services – Employee Benefits</u>					
220 Social Security Contributions					11,326.60
230 PSERS Retirement Contributions					29,813.89
250 Unemployment Compensation					2,312.74
260 Workers' Compensation					966.18
Total Personnel Services – Employee Benefits					\$44,419.41
Total 2720 Vehicle Operation Services					\$193,058.80

LEA : 117414203 Loyalsock Township SD

Printed 1/7/2020 11:44:31 AM

General Fund (10)

2750 Nonpublic Transportation	<u>Elementary</u>	<u>Secondary</u>	<u>Federal</u>	<u>Total</u>
400 <u>Purchased Property Services</u>				
430 Repairs and Maintenance Services				1,540.00
Total Purchased Property Services				\$1,540.00
Total 2750 Nonpublic Transportation				\$1,540.00

LEA : 117414203 Loyalsock Township SD

Printed 1/7/2020 11:44:31 AM

General Fund (10)

2800 Support Services – Central

	<u>Elementary</u>	<u>Secondary</u>	<u>Federal</u>	<u>Total</u>
100 <u>Personnel Services – Salaries</u>				
100 Personnel Services – Salaries				139,625.04
Total Personnel Services – Salaries				\$139,625.04
200 <u>Personnel Services – Employee Benefits</u>				
210 Group Insurance – Contracted Provider				42,163.69
220 Social Security Contributions				9,963.16
230 PSERS Retirement Contributions				46,198.21
240 Tuition Reimbursement				1,535.00
250 Unemployment Compensation				399.99
260 Workers' Compensation				907.37
Total Personnel Services – Employee Benefits				\$101,167.42
Total 2800 Support Services – Central				\$240,792.46

LEA : 117414203 Loyalsock Township SD

Printed 1/7/2020 11:44:31 AM

General Fund (10)

2810 Planning, Research, Development and Evaluation Services	<u>Elementary</u>	<u>Secondary</u>	<u>Federal</u>	<u>Total</u>
100 <u>Personnel Services – Salaries</u>				
100 Personnel Services – Salaries				139,625.04
Total Personnel Services – Salaries				\$139,625.04
200 <u>Personnel Services – Employee Benefits</u>				
210 Group Insurance – Contracted Provider				42,163.69
220 Social Security Contributions				9,963.16
230 PSERS Retirement Contributions				46,198.21
250 Unemployment Compensation				399.99
260 Workers' Compensation				907.37
Total Personnel Services – Employee Benefits				\$99,632.42
Total 2810 Planning, Research, Development and Evaluation Services				\$239,257.46

LEA : 117414203 Loyalsock Township SD

Printed 1/7/2020 11:44:31 AM

General Fund (10)

2830 Staff Services

<u>Elementary</u>	<u>Secondary</u>	<u>Federal</u>	<u>Total</u>
-------------------	------------------	----------------	--------------

200 Personnel Services – Employee Benefits

240 Tuition Reimbursement			1,535.00
---------------------------	--	--	----------

Total Personnel Services – Employee Benefits			\$1,535.00
---	--	--	-------------------

Total 2830 Staff Services			\$1,535.00
----------------------------------	--	--	-------------------

LEA : 117414203 Loyalsock Township SD

Printed 1/7/2020 11:44:31 AM

General Fund (10)

2834 Staff Development Services – Non-Instructional, Certified Staff Only	<u>Elementary</u>	<u>Secondary</u>	<u>Federal</u>	<u>Total</u>
200 <u>Personnel Services – Employee Benefits</u>				
240 Tuition Reimbursement				1,535.00
Total Personnel Services – Employee Benefits				\$1,535.00
Total 2834 Staff Development Services – Non-Instructional, Certified Staff Only				\$1,535.00

LEA : 117414203 Loyalsock Township SD

Printed 1/7/2020 11:44:31 AM

General Fund (10)

2900 Other Support Services

Elementary

Secondary

Federal

Total

600 Supplies

610 General Supplies

930.84

Total Supplies				\$930.84
Total 2900 Other Support Services				\$930.84

LEA : 117414203 Loyalsock Township SD

Printed 1/7/2020 11:44:31 AM

General Fund (10)

2910 Support Services Not Listed Elsewhere In the 2000 Series

Elementary Secondary Federal Total

600 <u>Supplies</u>				
610 General Supplies				930.84

Total Supplies				\$930.84
Total 2910 Support Services Not Listed Elsewhere In the 2000 Series				\$930.84

LEA : 117414203 Loyalsock Township SD

Printed 1/7/2020 11:44:49 AM

General Fund (10)	
3000 Operation of Non-Instructional Services	<u>Total</u>
100 <u>Personnel Services – Salaries</u>	
100 Personnel Services – Salaries	296,808.05
Total Personnel Services – Salaries	\$296,808.05
200 <u>Personnel Services – Employee Benefits</u>	
210 Group Insurance – Contracted Provider	166.57
220 Social Security Contributions	22,538.81
230 PSERS Retirement Contributions	75,380.32
250 Unemployment Compensation	3,717.48
260 Workers' Compensation	1,929.48
Total Personnel Services – Employee Benefits	\$103,732.66
300 <u>Purchased Professional and Technical Services</u>	
310 Official / Administrative Services	96,738.73
340 Technical Services	28,557.86
Total Purchased Professional and Technical Services	\$125,296.59
400 <u>Purchased Property Services</u>	
430 Repairs and Maintenance Services	5,712.15
440 Rentals	3,010.00
Total Purchased Property Services	\$8,722.15
500 <u>Other Purchased Services</u>	
510 Student Transportation Services	1,047.00
520 Insurance – General	25,727.00
530 Communications	2,491.44
550 Printing and Binding	8,632.73
580 Travel	19,226.21
Total Other Purchased Services	\$57,124.38
600 <u>Supplies</u>	
610 General Supplies	68,786.56
Total Supplies	\$68,786.56
800 <u>Other Objects</u>	
810 Dues and Fees	11,434.50
Total Other Objects	\$11,434.50
Total 3000 Operation of Non-Instructional Services	\$671,904.89

LEA : 117414203 Loyalsock Township SD

Printed 1/7/2020 11:44:49 AM

General Fund (10)				
3200 Student Activities				
	<u>Elementary</u>	<u>Secondary</u>	<u>Federal</u>	<u>Total</u>
100 <u>Personnel Services – Salaries</u>				
100 Personnel Services – Salaries				229,921.53
Total Personnel Services – Salaries				\$229,921.53
200 <u>Personnel Services – Employee Benefits</u>				
220 Social Security Contributions				17,418.84
230 PSERS Retirement Contributions				55,843.13
250 Unemployment Compensation				3,010.02
260 Workers' Compensation				1,494.64
Total Personnel Services – Employee Benefits				\$77,766.63
300 <u>Purchased Professional and Technical Services</u>				
310 Official / Administrative Services				78,133.92
340 Technical Services				28,557.86
Total Purchased Professional and Technical Services				\$106,691.78
400 <u>Purchased Property Services</u>				
430 Repairs and Maintenance Services				5,712.15
440 Rentals				3,010.00
Total Purchased Property Services				\$8,722.15
500 <u>Other Purchased Services</u>				
510 Student Transportation Services				1,047.00
520 Insurance – General				25,727.00
580 Travel				19,226.21
Total Other Purchased Services				\$46,000.21
600 <u>Supplies</u>				
610 General Supplies				68,786.56
Total Supplies				\$68,786.56
800 <u>Other Objects</u>				
810 Dues and Fees				11,434.50
Total Other Objects				\$11,434.50
Total 3200 Student Activities				\$549,323.36

LEA : 117414203 Loyalsock Township SD

Printed 1/7/2020 11:44:49 AM

General Fund (10)

3300 Community Services

Elementary Secondary Federal Total

100 <u>Personnel Services – Salaries</u>				
100 Personnel Services – Salaries				66,886.52
Total Personnel Services – Salaries				\$66,886.52
200 <u>Personnel Services – Employee Benefits</u>				
210 Group Insurance – Contracted Provider				166.57
220 Social Security Contributions				5,119.97
230 PSERS Retirement Contributions				19,537.19
250 Unemployment Compensation				707.46
260 Workers' Compensation				434.84
Total Personnel Services – Employee Benefits				\$25,966.03
300 <u>Purchased Professional and Technical Services</u>				
310 Official / Administrative Services				18,604.81
Total Purchased Professional and Technical Services				\$18,604.81
500 <u>Other Purchased Services</u>				
530 Communications				2,491.44
550 Printing and Binding				8,632.73
Total Other Purchased Services				\$11,124.17
Total 3300 Community Services				\$122,581.53

LEA : 117414203 Loyalsock Township SD

Printed 1/7/2020 11:45:32 AM

General Fund (10)

5000 Other Expenditures and Financing Uses

Total

800 <u>Other Objects</u>	
830 Interest	7,180.04
Total Other Objects	\$7,180.04
900 <u>Other Uses of Funds</u>	
910 Redemption of Principal	164,398.36
932 Capital Reserve Fund Transfers Applicable To Fund 32	250,000.00
939 Other Fund Transfers	2,329,667.50
Total Other Uses of Funds	\$2,744,065.86
Total 5000 Other Expenditures and Financing Uses	\$2,751,245.90

General Fund (10)

5100 Debt Service / Other Expenditures and Financing Uses	<u>Elementary</u>	<u>Secondary</u>	<u>Federal</u>	<u>Total</u>
800 <u>Other Objects</u>				
830 Interest				7,180.04
Total Other Objects				\$7,180.04
900 <u>Other Uses of Funds</u>				
910 Redemption of Principal				164,398.36
Total Other Uses of Funds				\$164,398.36
Total 5100 Debt Service / Other Expenditures and Financing Uses				\$171,578.40

LEA : 117414203 Loyalsock Township SD

Printed 1/7/2020 11:45:32 AM

General Fund (10)				
5110 Debt Service	<u>Elementary</u>	<u>Secondary</u>	<u>Federal</u>	<u>Total</u>
800 <u>Other Objects</u>				
830 Interest				7,180.04
Total Other Objects				\$7,180.04
900 <u>Other Uses of Funds</u>				
910 Redemption of Principal				164,398.36
Total Other Uses of Funds				\$164,398.36
Total 5110 Debt Service				\$171,578.40

General Fund (10)

5200 Interfund Transfers – Out

Elementary

Secondary

FederalTotal

900 Other Uses of Funds

932 Capital Reserve Fund Transfers Applicable To Fund 32

250,000.00

939 Other Fund Transfers

2,329,667.50

Total Other Uses of Funds

\$2,579,667.50

Total 5200 Interfund Transfers – Out

\$2,579,667.50

LEA : 117414203 Loyalsock Township SD

Printed 1/7/2020 11:45:32 AM

General Fund (10)

5230 Capital Projects Fund Transfers	<u>Elementary</u>	<u>Secondary</u>	<u>Federal</u>	<u>Total</u>
900 <u>Other Uses of Funds</u>				
932 Capital Reserve Fund Transfers Applicable To Fund 32				250,000.00
Total Other Uses of Funds				\$250,000.00
Total 5230 Capital Projects Fund Transfers				\$250,000.00

LEA : 117414203 Loyalsock Township SD

Printed 1/7/2020 11:45:32 AM

General Fund (10)

5240 Debt Service Fund Transfers	<u>Elementary</u>	<u>Secondary</u>	<u>Federal</u>	<u>Total</u>
900 <u>Other Uses of Funds</u>				
939 Other Fund Transfers				2,329,667.50
Total Other Uses of Funds				\$2,329,667.50
Total 5240 Debt Service Fund Transfers				\$2,329,667.50

LEA : 117414203 Loyalsock Township SD

Printed 1/7/2020 11:44:35 AM

Capital Reserve Fund - § 1431 (32)

		<u>Total</u>
2000 Support Services		
700 <u>Property</u>		
752 Capital Equipment – Original and Additional		206,228.67
Total Property		\$206,228.67
800 <u>Other Objects</u>		
810 Dues and Fees		79.00
Total Other Objects		\$79.00
Total 2000 Support Services		\$206,307.67

LEA : 117414203 Loyalsock Township SD

Printed 1/7/2020 11:44:35 AM

Capital Reserve Fund - § 1431 (32)				
2500 Support Services – Business	<u>Elementary</u>	<u>Secondary</u>	<u>Federal</u>	<u>Total</u>
800 <u>Other Objects</u>				
810 Dues and Fees				79.00
Total Other Objects				\$79.00
Total 2500 Support Services – Business				\$79.00

LEA : 117414203 Loyalsock Township SD

Printed 1/7/2020 11:44:35 AM

Capital Reserve Fund - § 1431 (32)

2510 Fiscal Services

<u>Elementary</u>	<u>Secondary</u>	<u>Federal</u>	<u>Total</u>
-------------------	------------------	----------------	--------------

800 Other Objects

810 Dues and Fees			79.00
-------------------	--	--	-------

Total Other Objects			\$79.00
----------------------------	--	--	----------------

Total 2510 Fiscal Services			\$79.00
-----------------------------------	--	--	----------------

LEA : 117414203 Loyalsock Township SD

Printed 1/7/2020 11:44:35 AM

Capital Reserve Fund - § 1431 (32)

2511 Supervision of Fiscal Services - Head of Component

Elementary

Secondary

Federal

Total

800 Other Objects

810 Dues and Fees

79.00

Total Other Objects				\$79.00
Total 2511 Supervision of Fiscal Services - Head of Component				\$79.00

LEA : 117414203 Loyalsock Township SD

Printed 1/7/2020 11:44:35 AM

Capital Reserve Fund - § 1431 (32)

2600 Operation and Maintenance of Plant Services

Elementary

Secondary

Federal

Total

700 Property

752 Capital Equipment – Original and Additional

54,538.67

Total Property				\$54,538.67
Total 2600 Operation and Maintenance of Plant Services				\$54,538.67

LEA : 117414203 Loyalsock Township SD

Printed 1/7/2020 11:44:35 AM

Capital Reserve Fund - § 1431 (32)

2620 Operation of Buildings Services

<u>Elementary</u>	<u>Secondary</u>	<u>Federal</u>	<u>Total</u>
-------------------	------------------	----------------	--------------

700 Property

752 Capital Equipment – Original and Additional			54,538.67
---	--	--	-----------

Total Property			\$54,538.67
-----------------------	--	--	--------------------

Total 2620 Operation of Buildings Services			\$54,538.67
---	--	--	--------------------

LEA : 117414203 Loyalsock Township SD

Printed 1/7/2020 11:44:35 AM

Capital Reserve Fund - § 1431 (32)

2700 Student Transportation Services

Elementary Secondary Federal Total

700 <u>Property</u>				
752 Capital Equipment – Original and Additional				151,690.00
Total Property				\$151,690.00
Total 2700 Student Transportation Services				\$151,690.00

LEA : 117414203 Loyalsock Township SD

Printed 1/7/2020 11:44:35 AM

Capital Reserve Fund - § 1431 (32)

2720 Vehicle Operation Services

<u>Elementary</u>	<u>Secondary</u>	<u>Federal</u>	<u>Total</u>
-------------------	------------------	----------------	--------------

700 Property

752 Capital Equipment – Original and Additional				151,690.00
---	--	--	--	------------

Total Property				\$151,690.00
-----------------------	--	--	--	---------------------

Total 2720 Vehicle Operation Services				\$151,690.00
--	--	--	--	---------------------

LEA : 117414203 Loyalsock Township SD

Printed 1/7/2020 11:44:52 AM

Capital Reserve Fund - § 1431 (32)

3000 Operation of Non-Instructional Services

Total

700 Property

752 Capital Equipment – Original and Additional

20,000.00

Total Property

\$20,000.00

Total 3000 Operation of Non-Instructional Services

\$20,000.00

LEA : 117414203 Loyalsock Township SD

Printed 1/7/2020 11:44:52 AM

Capital Reserve Fund - § 1431 (32)

3200 Student Activities

<u>Elementary</u>	<u>Secondary</u>	<u>Federal</u>	<u>Total</u>
-------------------	------------------	----------------	--------------

700 Property

752 Capital Equipment – Original and Additional			20,000.00
---	--	--	-----------

Total Property			\$20,000.00
-----------------------	--	--	--------------------

Total 3200 Student Activities			\$20,000.00
--------------------------------------	--	--	--------------------

LEA : 117414203 Loyalsock Township SD

Printed 1/7/2020 11:45:07 AM

Capital Reserve Fund - § 1431 (32)

4000 Facilities Acquisition, Construction and Improvement Services

Total

400 Purchased Property Services

450 Construction Services	93,050.68
490 Other Purchased Property Services	50.00

Total Purchased Property Services	\$93,100.68
--	--------------------

700 Property

720 Buildings	6,085.00
---------------	----------

Total Property	\$6,085.00
-----------------------	-------------------

Total 4000 Facilities Acquisition, Construction and Improvement Services	\$99,185.68
---	--------------------

LEA : 117414203 Loyalsock Township SD

Printed 1/7/2020 11:45:07 AM

Capital Reserve Fund - § 1431 (32)

4200 Existing Site Improvement Services

Elementary

Secondary

Federal

Total

400 Purchased Property Services

450 Construction Services

23,180.00

Total Purchased Property Services				\$23,180.00
Total 4200 Existing Site Improvement Services				\$23,180.00

LEA : 117414203 Loyalsock Township SD

Printed 1/7/2020 11:45:07 AM

Capital Reserve Fund - § 1431 (32)

4500 Building Acquisition and Construction Services – Original and Additional	<u>Elementary</u>	<u>Secondary</u>	<u>Federal</u>	<u>Total</u>
400 <u>Purchased Property Services</u>				
450 Construction Services				24,370.68
490 Other Purchased Property Services				50.00
Total Purchased Property Services				\$24,420.68
700 <u>Property</u>				
720 Buildings				6,085.00
Total Property				\$6,085.00
Total 4500 Building Acquisition and Construction Services – Original and Additional				\$30,505.68

LEA : 117414203 Loyalsock Township SD

Printed 1/7/2020 11:45:07 AM

Capital Reserve Fund - § 1431 (32)				
4600 Existing Building Improvement Services	<u>Elementary</u>	<u>Secondary</u>	<u>Federal</u>	<u>Total</u>
400 <u>Purchased Property Services</u>				
450 Construction Services				45,500.00
Total Purchased Property Services				\$45,500.00
Total 4600 Existing Building Improvement Services				\$45,500.00

LEA : 117414203 Loyalsock Township SD

Printed 1/7/2020 11:45:13 AM

Other Capital Projects Fund (39)

4000 Facilities Acquisition, Construction and Improvement Services

Total

300 Purchased Professional and Technical Services

330 Other Professional Services	11,537.50
---------------------------------	-----------

Total Purchased Professional and Technical Services	\$11,537.50
--	--------------------

400 Purchased Property Services

450 Construction Services	79,950.00
---------------------------	-----------

490 Other Purchased Property Services	1,536.89
---------------------------------------	----------

Total Purchased Property Services	\$81,486.89
--	--------------------

700 Property

752 Capital Equipment – Original and Additional	6,916.00
---	----------

Total Property	\$6,916.00
-----------------------	-------------------

Total 4000 Facilities Acquisition, Construction and Improvement Services	\$99,940.39
---	--------------------

LEA : 117414203 Loyalsock Township SD

Printed 1/7/2020 11:45:13 AM

Other Capital Projects Fund (39)

4300 Architecture and Engineering Services / Educational Specifications Development – Original and Additional	<u>Elementary</u>	<u>Secondary</u>	<u>Federal</u>	<u>Total</u>
300 <u>Purchased Professional and Technical Services</u>				
330 Other Professional Services				11,537.50
Total Purchased Professional and Technical Services				\$11,537.50
Total 4300 Architecture and Engineering Services / Educational Specifications Development – Original and Additional				\$11,537.50

LEA : 117414203 Loyalsock Township SD

Printed 1/7/2020 11:45:13 AM

Other Capital Projects Fund (39)

4500 Building Acquisition and Construction Services – Original and Additional	<u>Elementary</u>	<u>Secondary</u>	<u>Federal</u>	<u>Total</u>
400 <u>Purchased Property Services</u>				
450 Construction Services				62,050.00
490 Other Purchased Property Services				1,536.89
Total Purchased Property Services				\$63,586.89
Total 4500 Building Acquisition and Construction Services – Original and Additional				\$63,586.89

LEA : 117414203 Loyalsock Township SD

Printed 1/7/2020 11:45:13 AM

Other Capital Projects Fund (39)

4600 Existing Building Improvement Services	<u>Elementary</u>	<u>Secondary</u>	<u>Federal</u>	<u>Total</u>
400 <u>Purchased Property Services</u>				
450 Construction Services				17,900.00
Total Purchased Property Services				\$17,900.00
700 <u>Property</u>				
752 Capital Equipment – Original and Additional				6,916.00
Total Property				\$6,916.00
Total 4600 Existing Building Improvement Services				\$24,816.00

LEA : 117414203 Loyalsock Township SD

Printed 1/7/2020 11:45:40 AM

Debt Service Fund (40)

5000 Other Expenditures and Financing Uses

Total

800 <u>Other Objects</u>	
830 Interest	379,667.50
Total Other Objects	\$379,667.50
900 <u>Other Uses of Funds</u>	
910 Redemption of Principal	1,950,000.00
Total Other Uses of Funds	\$1,950,000.00
Total 5000 Other Expenditures and Financing Uses	\$2,329,667.50

LEA : 117414203 Loyalsock Township SD

Printed 1/7/2020 11:45:40 AM

Debt Service Fund (40)

5100 Debt Service / Other Expenditures and Financing Uses	<u>Elementary</u>	<u>Secondary</u>	<u>Federal</u>	<u>Total</u>
800 <u>Other Objects</u>				
830 Interest				379,667.50
Total Other Objects				\$379,667.50
900 <u>Other Uses of Funds</u>				
910 Redemption of Principal				1,950,000.00
Total Other Uses of Funds				\$1,950,000.00
Total 5100 Debt Service / Other Expenditures and Financing Uses				\$2,329,667.50

LEA : 117414203 Loyalsock Township SD

Printed 1/7/2020 11:45:40 AM

Debt Service Fund (40)

5110 Debt Service	<u>Elementary</u>	<u>Secondary</u>	<u>Federal</u>	<u>Total</u>
800 <u>Other Objects</u>				
830 Interest				379,667.50
Total Other Objects				\$379,667.50
900 <u>Other Uses of Funds</u>				
910 Redemption of Principal				1,950,000.00
Total Other Uses of Funds				\$1,950,000.00
Total 5110 Debt Service				\$2,329,667.50

	<u>General Fund(10)</u>	<u>Public Purpose Trust(27)</u>	<u>Other Compt Approved (28)</u>	<u>Athletic / Activity(29)</u>	<u>Capital Reserve (690. 1850)(31)</u>
1000 <u>Instruction</u>					
1100 Regular Programs - Elementary / Secondary	9,816,071.45				
1200 Special Programs - Elementary / Secondary	3,367,884.89				
1300 Vocational Education	266,046.05				
1400 Other Instructional Programs - Elementary / Secondary	157,670.56				
Total Instruction	\$13,607,672.95				
2000 <u>Support Services</u>					
2100 Support Services - Students	739,489.40				
2200 Support Services - Instructional Staff	780,447.62				
2300 Support Services - Administration	1,960,418.60				
2400 Support Services - Pupil Health	271,255.17				
2500 Support Services - Business	417,986.07				
2600 Operation and Maintenance of Plant Services	1,803,579.49				
2700 Student Transportation Services	448,121.74				
2800 Support Services - Central	240,792.46				
2900 Other Support Services	930.84				
Total Support Services	\$6,663,021.39				
3000 <u>Operation of Non-Instructional Services</u>					
3200 Student Activities	549,323.36				
3300 Community Services	122,581.53				
Total Operation of Non-Instructional Services	\$671,904.89				
4000 <u>Facilities Acquisition, Construction and Improvement Services</u>					
4200 Existing Site Improvement Services					
4300 Architecture and Engineering Services / Educational Specifications Development - Original and Additional					
4500 Building Acquisition and Construction Services - Original and Additional					
4600 Existing Building Improvement Services					
Total Facilities Acquisition, Construction and Improvement					
5000 <u>Other Expenditures and Financing Uses</u>					
5100 Debt Service / Other Expenditures and Financing Uses	171,578.40				
5200 Interfund Transfers - Out	2,579,667.50				
Total Other Expenditures and Financing Uses	\$2,751,245.90				
TOTAL ACTUAL EXPENDITURES & OTHER FINANCING USES	\$23,693,845.13				

LEA : 117414203 Loyalsock Township SD

Printed 1/7/2020 11:46:02 AM

	<u>Capital Reserve (1431)(32)</u>	<u>Other Capital Projects Fund(39)</u>	<u>Debt Service(40)</u>	<u>Permanent(90)</u>	<u>Total</u>
1000 <u>Instruction</u>					
1100 Regular Programs - Elementary / Secondary					9,816,071.45
1200 Special Programs - Elementary / Secondary					3,367,884.89
1300 Vocational Education					266,046.05
1400 Other Instructional Programs - Elementary / Secondary					157,670.56
Total Instruction					\$13,607,672.95
2000 <u>Support Services</u>					
2100 Support Services - Students					739,489.40
2200 Support Services - Instructional Staff					780,447.62
2300 Support Services - Administration					1,960,418.60
2400 Support Services - Pupil Health					271,255.17
2500 Support Services - Business	79.00				418,065.07
2600 Operation and Maintenance of Plant Services	54,538.67				1,858,118.16
2700 Student Transportation Services	151,690.00				599,811.74
2800 Support Services - Central					240,792.46
2900 Other Support Services					930.84
Total Support Services	\$206,307.67				\$6,869,329.06
3000 <u>Operation of Non-Instructional Services</u>					
3200 Student Activities	20,000.00				569,323.36
3300 Community Services					122,581.53
Total Operation of Non-Instructional Services	\$20,000.00				\$691,904.89
4000 <u>Facilities Acquisition, Construction and Improvement Services</u>					
4200 Existing Site Improvement Services	23,180.00				23,180.00
4300 Architecture and Engineering Services / Educational Specifications Development - Original and Additional		11,537.50			11,537.50
4500 Building Acquisition and Construction Services - Original and Additional	30,505.68	63,586.89			94,092.57
4600 Existing Building Improvement Services	45,500.00	24,816.00			70,316.00
Total Facilities Acquisition, Construction and Improvement	\$99,185.68	\$99,940.39			\$199,126.07
5000 <u>Other Expenditures and Financing Uses</u>					
5100 Debt Service / Other Expenditures and Financing Uses			2,329,667.50		2,501,245.90
5200 Interfund Transfers - Out					2,579,667.50
Total Other Expenditures and Financing Uses			\$2,329,667.50		\$5,080,913.40
TOTAL ACTUAL EXPENDITURES & OTHER FINANCING USES	\$325,493.35	\$99,940.39	\$2,329,667.50		\$26,448,946.37

LEA : 117414203 Loyalsock Township SD

Printed 1/7/2020 11:46:20 AM

PSERS Salary Data (Salary Data should relate to the General Fund only)

Amount	Description	Amount
	Total Salary Base for salaries subject to PSERS withholding	9,696,289.00
	Total Federally Funded salaries subject to PSERS withholding	227,387.77

Title I Expenditure Data

Amount	Description	Amount
	Expenditures Funded with Current Title I Funds	223,684.00
	Expenditures Funded with Carry over Title I Funds	58,299.00
Total Title I Expenditure Data		\$281,983.00

Benefits for Staff Relative to Collective Bargaining Agreements

	OBJECT	COVERED	NOT COVERED	TOTAL
10 General Fund	No Self Insurance data to report			
	211 Medical Insurance	1,656,471.41	359,041.68	2,015,513.09
	212 Dental Insurance	31,001.50	7,068.00	38,069.50
	215 Eye Care Insurance			
	216 Prescription Insurance			
	271 Self-Insurance Medical Benefits			
	272 Self-Insurance Dental Benefits			
	275 Self-Insurance Eye Care Benefits			
	276 Self-Insurance Prescription Benefits			
	FUND TOTAL	\$1,687,472.91	\$366,109.68	\$2,053,582.59
50 Enterprise Fund	No Self Insurance data to report			
	211 Medical Insurance		67,140.29	67,140.29
	212 Dental Insurance		1,302.00	1,302.00
	215 Eye Care Insurance			
	216 Prescription Insurance			
	271 Self-Insurance Medical Benefits			
	272 Self-Insurance Dental Benefits			
	275 Self-Insurance Eye Care Benefits			
	276 Self-Insurance Prescription Benefits			
	FUND TOTAL		\$68,442.29	\$68,442.29
60 Internal Service Fund	No Self Insurance data to report			
	211 Medical Insurance			
	212 Dental Insurance			
	215 Eye Care Insurance			
	216 Prescription Insurance			
	271 Self-Insurance Medical Benefits			
	272 Self-Insurance Dental Benefits			
	275 Self-Insurance Eye Care Benefits			
	276 Self-Insurance Prescription Benefits			
	FUND TOTAL			
Total of All Funds		\$1,687,472.91	\$434,551.97	\$2,122,024.88

LEA : 117414203 Loyalsock Township SD

Printed 1/7/2020 11:46:43 AM

Function	Special Education (Prior Year)	Nonspecial Education (Prior Year)	Total (Prior Year)	Special Education (Current Year)	Nonspecial Education (Current Year)	Total (Current Year)
2120 Guidance Services	275,782.96	275,782.96	551,565.92	285,731.93	285,731.94	571,463.87
2140 Psychological Services	44,054.75	44,054.75	88,109.50	48,702.51	48,702.51	97,405.02
2150 Speech Pathology and Audiology Services						
2160 Social Work Services						
2260 Instruction and Curriculum Development Services	16,594.29	94,034.28	110,628.57	42,390.22	240,211.23	282,601.45
2350 Legal and Accounting Services	768.87	14,608.44	15,377.31	1,455.05	27,645.93	29,100.98
2420 Medical Services						
2440 Nursing Services	38,479.63	218,051.25	256,530.88	40,688.28	230,566.89	271,255.17
2700 Student Transportation Services	63,881.64	361,995.96	425,877.60	67,218.26	380,903.48	448,121.74
Total	\$439,562.14	\$1,008,527.64	\$1,448,089.78	\$486,186.25	\$1,213,761.98	\$1,699,948.23

LEA : 117414203 Loyalsock Township SD

Printed 1/7/2020 11:46:58 AM

	(PRINCIPAL AMOUNTS ONLY)							
<u>GOVERNMENTAL FUNDS/ ACTIVITIES</u>	Short-Term Borrowing	General Obligation Bonds/Notes	Authority Building Obligations	Other Long-Term Debt	Other Post- Employment Benefits (OPEB)	Compensated Absences	Net Pension Liability	Total
1. Debt at Beginning of Fiscal Year		18,340,000.00		190,363.00	2,674,189.00	159,040.00	33,700,212.00	55,063,804.00
2. Additional Debt Incurred During Year					556,933.00	57,320.00		614,253.00
3. Retirements and Repayments		1,950,000.00		164,173.96		13,390.00	1,271,376.00	3,398,939.96
4. Debt at End of Fiscal Year		16,390,000.00		26,189.04	3,231,122.00	202,970.00	32,428,836.00	52,279,117.04
5. Accreted Interest at End Of Fiscal Year								
6. Total Debt and Accreted Interest		16,390,000.00		26,189.04	3,231,122.00	202,970.00	32,428,836.00	52,279,117.04
7. Current Portion P&I - Due within 1 year		2,495,317.50		12,777.60				2,508,095.10
8. Interest Paid during current fiscal year		379,667.50		7,180.04				386,847.54

(PRINCIPAL AMOUNTS ONLY)								
<u>PROPRIETARY FUNDS</u>	Short-Term Borrowing	General Obligation Bonds/Notes	Authority Building Obligations	Other Long-Term Debt	Other Post- Employment Benefits (OPEB)	Compensated Absences	Net Pension Liability	Total
1. Debt at Beginning of Fiscal Year				1,927.78	40,041.00	11,720.00	970,789.00	1,024,477.78
2. Additional Debt Incurred During Year					531.00			531.00
3. Retirements and Repayments				639.21		1,207.00	36,625.00	38,471.21
4. Debt at End of Fiscal Year				1,288.57	40,572.00	10,513.00	934,164.00	986,537.57
5. Accreted Interest at End Of Fiscal Year								
6. Total Debt and Accreted Interest				1,288.57	40,572.00	10,513.00	934,164.00	986,537.57
7. Current Portion P&I - Due within 1 year				807.60				807.60
8. Interest Paid during current fiscal year				168.39				168.39

LEA : 117414203 Loyalsock Township SD

Printed 1/7/2020 11:46:58 AM

Total Principal and Interest Payments Made by Your School - All Funds

Function	Fund		Principal (910)	Principal (920)	Interest (830)	Total (Principal +Interest)	Misc Other Uses (990)
5110	10	General Fund	164,398.36		7,180.04	171,578.40	
5110	20	Special Revenue Funds					
5110	30	Capital Projects Funds					
5110	40	Debt Service Fund	1,950,000.00		379,667.50	2,329,667.50	
5110	90	Permanent Fund					
5120	10	General Fund					
5120	20	Special Revenue Funds					
5120	30	Capital Projects Funds					
5120	40	Debt Service Fund					
Total Debt Payments - Governmental Funds			\$2,114,398.36		\$386,847.54	\$2,501,245.90	

Function	Fund		Principal (910)	Principal (920)	Interest (830)	Total (Principal +Interest)
5110	50	Enterprise Fund				
5110	60	Internal Service Fund				
5120	50	Enterprise Fund				
5120	60	Internal Service Fund				
Total Debt Payments - Proprietary Funds						

LEA : 117414203 Loyalsock Township SD

Printed 1/7/2020 11:46:58 AM

Debt Details
Governmental Funds/ Activities

Debt Category	Debt Issue Date (MM/YYYY)	Principal Amounts Only				Current Portion Due Within One Year (Principal and Interest)	Interest Paid During Fiscal Year
		Debt at Beginning of Fiscal Year	Additions	Reductions / Repayments	Debt at End of Fiscal Year		
General Obligation Bonds/Notes – CIB	11/2017	7,360,000.00		50,000.00	7,310,000.00	376,400.00	157,400.00
General Obligation Bonds/Notes – CIB	08/2015	2,075,000.00		50,000.00	2,025,000.00	90,000.00	41,000.00
General Obligation Bonds/Notes – CIB	11/2014	5,180,000.00		5,000.00	5,175,000.00	130,117.50	125,217.50
General Obligation Bonds/Notes – CIB	08/2012	3,725,000.00		1,845,000.00	1,880,000.00	1,898,800.00	56,050.00
Other Long Term Debt/Liabilities		190,363.00		164,173.96	26,189.04	12,777.60	7,180.04
Compensated Absences		159,040.00	57,320.00	13,390.00	202,970.00		
Other Post-Employment Benefits (OPEB)		2,674,189.00	556,933.00		3,231,122.00		
Net Pension Liability		33,700,212.00		1,271,376.00	32,428,836.00		
Totals for Debt Entered:		\$55,063,804.00	\$614,253.00	\$3,398,939.96	\$52,279,117.04	\$2,508,095.10	\$386,847.54

Bond Details
Proprietary Funds

Debt Category	Debt Issue Date (MM/YYYY)	Principal Amounts Only				Current Portion Due Within One Year (Principal and Interest)	Interest Paid During Fiscal Year
		Debt at Beginning of Fiscal Year	Additions	Reductions / Repayments	Debt at End of Fiscal Year		
Other Long Term Debt/Liabilities		1,927.78		639.21	1,288.57	807.60	168.39
Compensated Absences		11,720.00		1,207.00	10,513.00		
Other Post-Employment Benefits (OPEB)		40,041.00	531.00		40,572.00		
Net Pension Liability		970,789.00		36,625.00	934,164.00		
Totals for Debt Entered:		\$1,024,477.78	\$531.00	\$38,471.21	\$986,537.57	\$807.60	\$168.39

LEA : 117414203 Loyalsock Township SD

Printed 1/7/2020 11:47:11 AM

General Fund (10)

Section 1: Tuition/Purchased Services as Reported within Expenditure Detail	Amount
Tuition Reported in General Fund Expenditures 1000-560	825,722.62
Purchased Services in General Fund Expenditures 1000-594 and 1000-597	3,996.98
Section 1 Total	\$829,719.60

Section 2: Tuition Paid to Institution Types During Fiscal Year	Tuition Paid For Nonspecial Education	Tuition Paid For Special Education	Total
1 1306 Institutions			
2 Institutionalized Children's Programs			
3 Juveniles Incarcerated in Adult Facilities			
4 Residential Treatment Facilities	7,344.71		7,344.71
5 Other Local Education Agencies	34,550.50	31,155.11	65,705.61
6 Brick and Mortar Charter Schools			
7 Cyber Charter Schools	250,619.44	140,012.88	390,632.32
8 Career and Technology Centers	266,046.05		266,046.05
9 Approved Private Schools			
10 PA Chartered Schools for the Deaf and Blind			
11 Private Residential Rehabilitative Institutions	91,493.93		91,493.93
12 Juvenile Detention Centers			
13 Special Program Jointures	3,996.98		3,996.98
14 Other Tuition Not Included Elsewhere In This Section	4,500.00		4,500.00
Section 2 Total	\$658,551.61	\$171,167.99	\$829,719.60

1 .	<u>Student Transportation Services for Educational Field Trips</u>	2,367.29
2 .	<u>Student Transportation Services for Student Activities</u>	11,983.46
3 .	<u>Rental of Vehicles for Student Transportation Services</u>	
4 .	<u>Capital Reserve Funds</u>	

Include only district-owned transportation expenditures paid from State or local money.
DO NOT include federal expenditures or payments to contract service providers.
Contracted transportation services should not be recorded on this schedule.

LEA : 117414203 Loyalsock Township SD

Printed 1/7/2020 11:47:26 AM

Food Service / Cafeteria Operations Fund (51)

3000 Operation of Non-Instructional Services		<u>Total</u>
100 <u>Personnel Services – Salaries</u>		
100 Personnel Services – Salaries	317,357.00	
Total Personnel Services – Salaries		\$317,357.00
200 <u>Personnel Services – Employee Benefits</u>		
210 Group Insurance – Contracted Provider	69,220.00	
220 Social Security Contributions	23,509.00	
230 PSERS Retirement Contributions	110,819.00	
250 Unemployment Compensation	3,810.00	
260 Workers' Compensation	2,071.00	
Total Personnel Services – Employee Benefits		\$209,429.00
400 <u>Purchased Property Services</u>		
430 Repairs and Maintenance Services	649.00	
Total Purchased Property Services		\$649.00
500 <u>Other Purchased Services</u>		
540 Advertising	970.00	
580 Travel	8,849.00	
Total Other Purchased Services		\$9,819.00
600 <u>Supplies</u>		
610 General Supplies	38,718.00	
630 Food	457,235.00	
Total Supplies		\$495,953.00
700 <u>Property</u>		
740 Depreciation	48,589.00	
Total Property		\$48,589.00
800 <u>Other Objects</u>		
810 Dues and Fees	2,227.00	
830 Interest	168.00	
Total Other Objects		\$2,395.00
Total 3000 Operation of Non-Instructional Services		\$1,084,191.00

LEA : 117414203 Loyalsock Township SD

Printed 1/7/2020 11:47:26 AM

Food Service / Cafeteria Operations Fund (51)

3100 Food Services	<u>Elementary</u>	<u>Secondary</u>	<u>Federal</u>	<u>Total</u>
100 <u>Personnel Services – Salaries</u>				
100 Personnel Services – Salaries				317,357.00
Total Personnel Services – Salaries				\$317,357.00
200 <u>Personnel Services – Employee Benefits</u>				
210 Group Insurance – Contracted Provider				69,220.00
220 Social Security Contributions				23,509.00
230 PSERS Retirement Contributions				110,819.00
250 Unemployment Compensation				3,810.00
260 Workers' Compensation				2,071.00
Total Personnel Services – Employee Benefits				\$209,429.00
400 <u>Purchased Property Services</u>				
430 Repairs and Maintenance Services				649.00
Total Purchased Property Services				\$649.00
500 <u>Other Purchased Services</u>				
540 Advertising				970.00
580 Travel				8,849.00
Total Other Purchased Services				\$9,819.00
600 <u>Supplies</u>				
610 General Supplies				38,718.00
630 Food				457,235.00
Total Supplies				\$495,953.00
700 <u>Property</u>				
740 Depreciation				48,589.00
Total Property				\$48,589.00
800 <u>Other Objects</u>				
810 Dues and Fees				2,227.00
830 Interest				168.00
Total Other Objects				\$2,395.00
Total 3100 Food Services				\$1,084,191.00

	<u>Food Service(51)</u>	<u>Child Care Operations(52)</u>	<u>Other Enterprise(58)</u>	<u>Internal Service(60)</u>	<u>Total</u>
3000 <u>Operation of Non-Instructional Services</u>					
3100 Food Services	1,084,191.00				1,084,191.00
Total Operation of Non-Instructional Services	\$1,084,191.00				\$1,084,191.00
TOTAL ACTUAL EXPENDITURES & OTHER FINANCING USES	\$1,084,191.00				\$1,084,191.00

LEA : 117414203 Loyalsock Township SD

Printed 1/7/2020 11:47:56 AM

Fund	School	School Number	Local Personnel	Local Nonpersonnel	State Personnel	State Nonpersonnel	Federal Personnel	Federal Nonpersonnel	Total	Explanation
10										
	Donald E. Schick Sch	3036	3,546,852.19	346,367.72	1,531,587.87	149,567.15	377,019.21	35,195.09	5,986,589.23	
	Loyalsock Twp MS	3037	2,282,603.82	286,875.15	985,665.07	123,877.31			3,679,021.35	
	Loyalsock Twp SHS	4828	3,144,468.82	487,673.89	1,357,832.26	210,585.43	245,835.00		5,446,395.40	
Total			8,973,924.83	1,120,916.76	3,875,085.20	484,029.89	622,854.21	35,195.09	15,112,005.98	